

HafenCity



Studio **001**  
Sqm (LFA) **317**  
Floor **Mezzanine**

**Rent per sqm per month**

1-year lease	<b>33,50</b>	EUR
3-year lease	<b>31,50</b>	EUR
5-year lease	<b>28,50</b>	EUR

\* Price increase per year based on the greater of CPI or 3%

**Monthly costs per sqm**

Service charges	<b>6,75</b>	EUR
Energy charges	<b>1,50</b>	EUR

\* Post-calculated



HafenCity



Studio **002**  
Sqm (LFA) **272**  
Floor **Mezzanine**

**Rent per sqm per month**

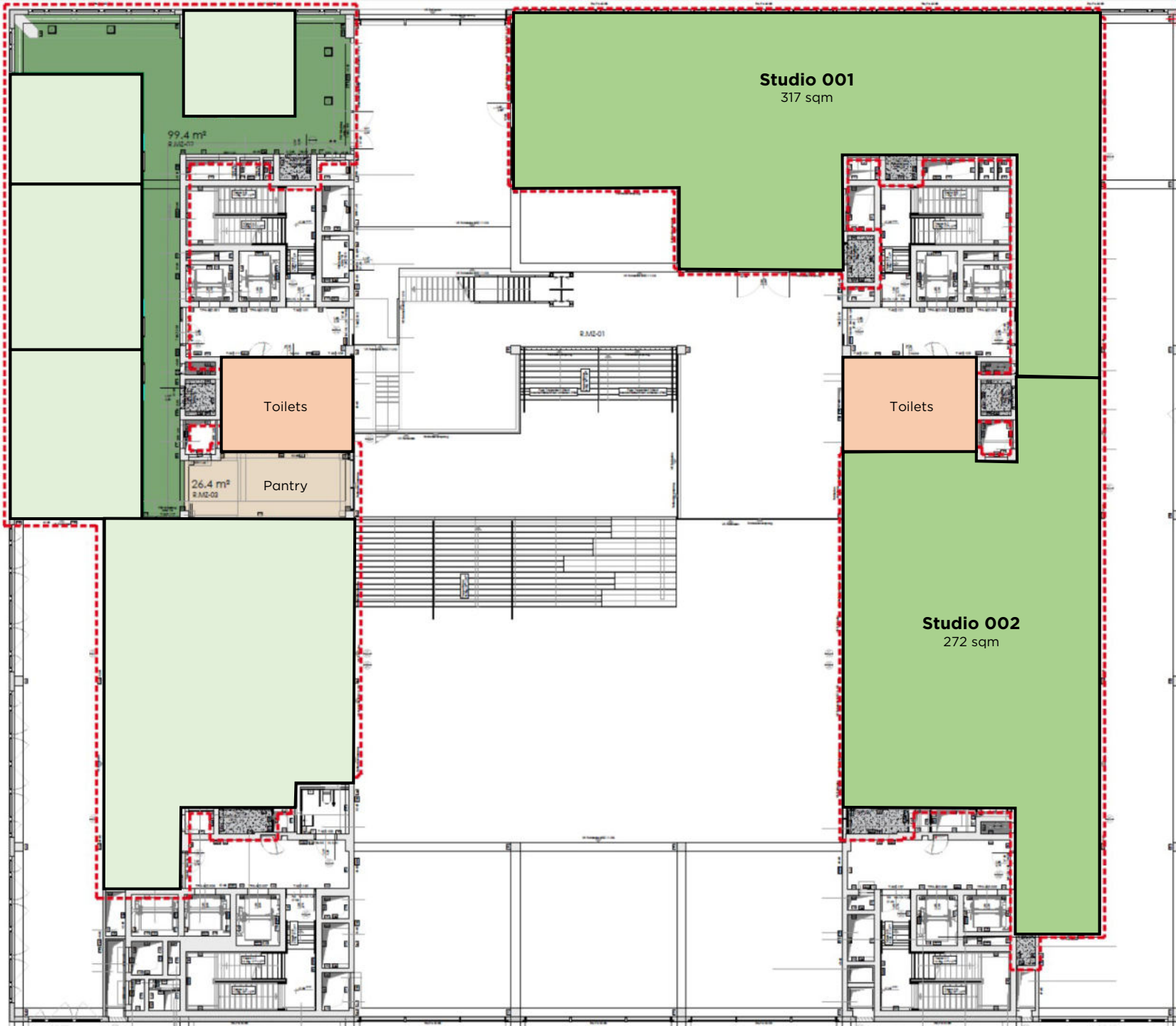
1-year lease	<b>33,50</b>	EUR
3-year lease	<b>31,50</b>	EUR
5-year lease	<b>28,50</b>	EUR

\* Price increase per year based on the greater of CPI or 3%

**Monthly costs per sqm**

Service charges	<b>6,75</b>	EUR
Energy charges	<b>1,50</b>	EUR

\* Post-calculated



HafenCity



Studio **001-002**  
Sqm (LFA) **589**  
Floor **Mezzanine**

**Rent per sqm per month**

1-year lease	<b>33,50</b>	EUR
3-year lease	<b>31,50</b>	EUR
5-year lease	<b>28,50</b>	EUR

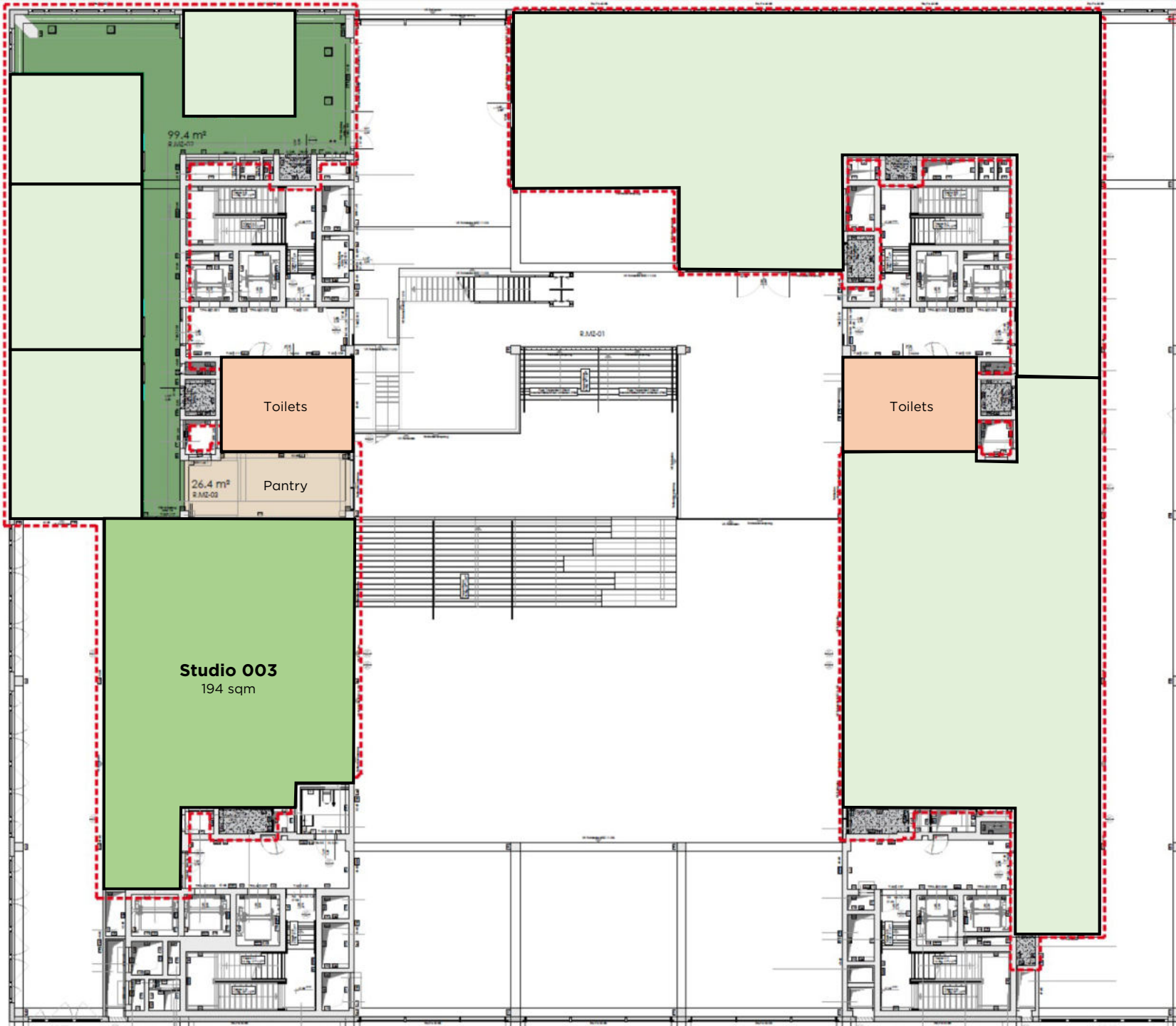
\* Price increase per year based on the greater of CPI or 3%

**Monthly costs per sqm**

Service charges	<b>6,75</b>	EUR
Energy charges	<b>1,50</b>	EUR

\* Post-calculated





HafenCity



Studio **003**  
Sqm (LFA) **194**  
Floor **Mezzanine**

**Rent per sqm per month**

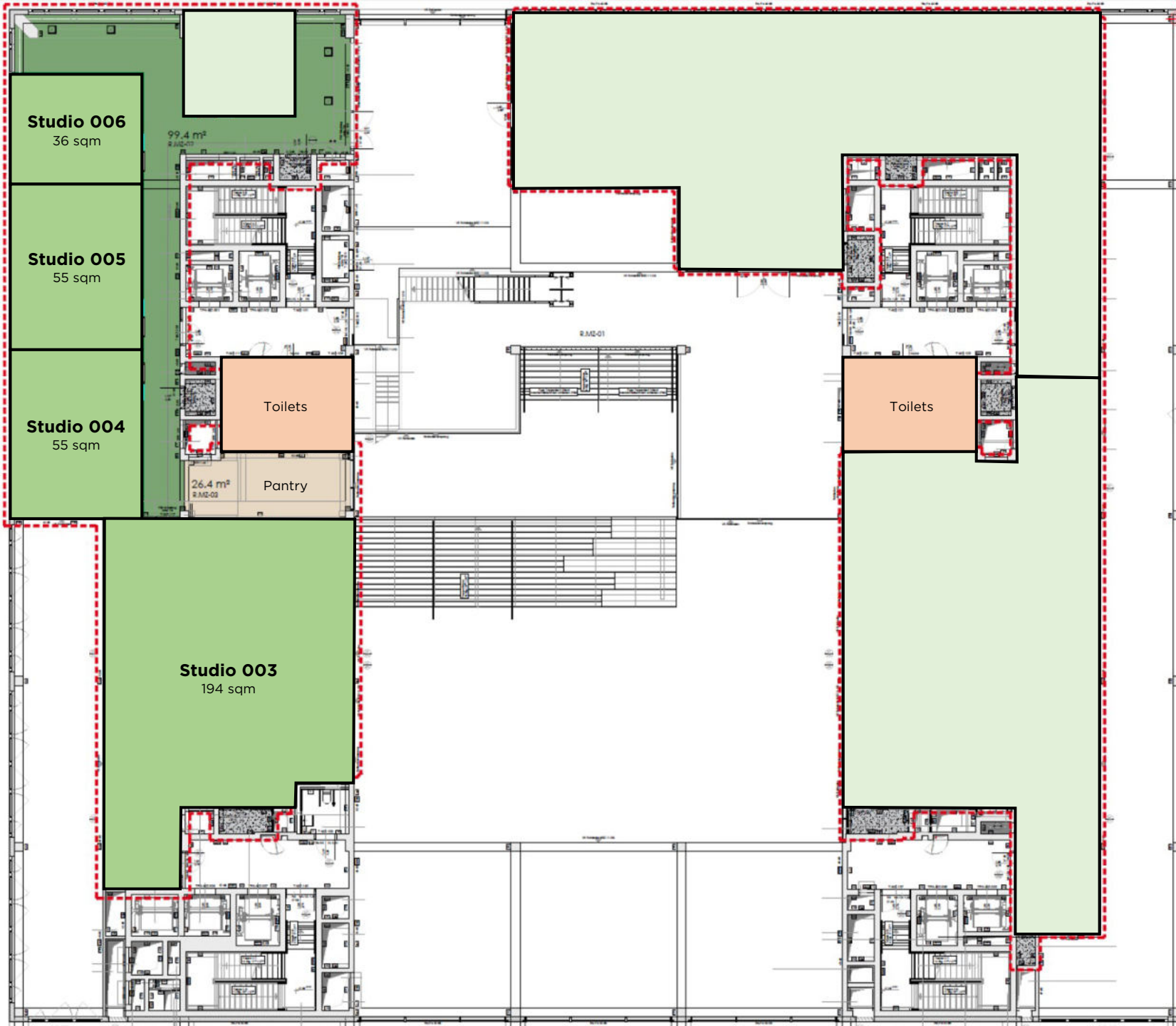
1-year lease	<b>33,50</b>	EUR
3-year lease	<b>31,50</b>	EUR
5-year lease	<b>28,50</b>	EUR

\* Price increase per year based on the greater of CPI or 3%

**Monthly costs per sqm**

Service charges	<b>6,75</b>	EUR
Energy charges	<b>1,50</b>	EUR

\* Post-calculated



HafenCity



Studio **003-006**  
Sqm (LFA) **340**  
Floor **Mezzanine**

**Rent per sqm per month**

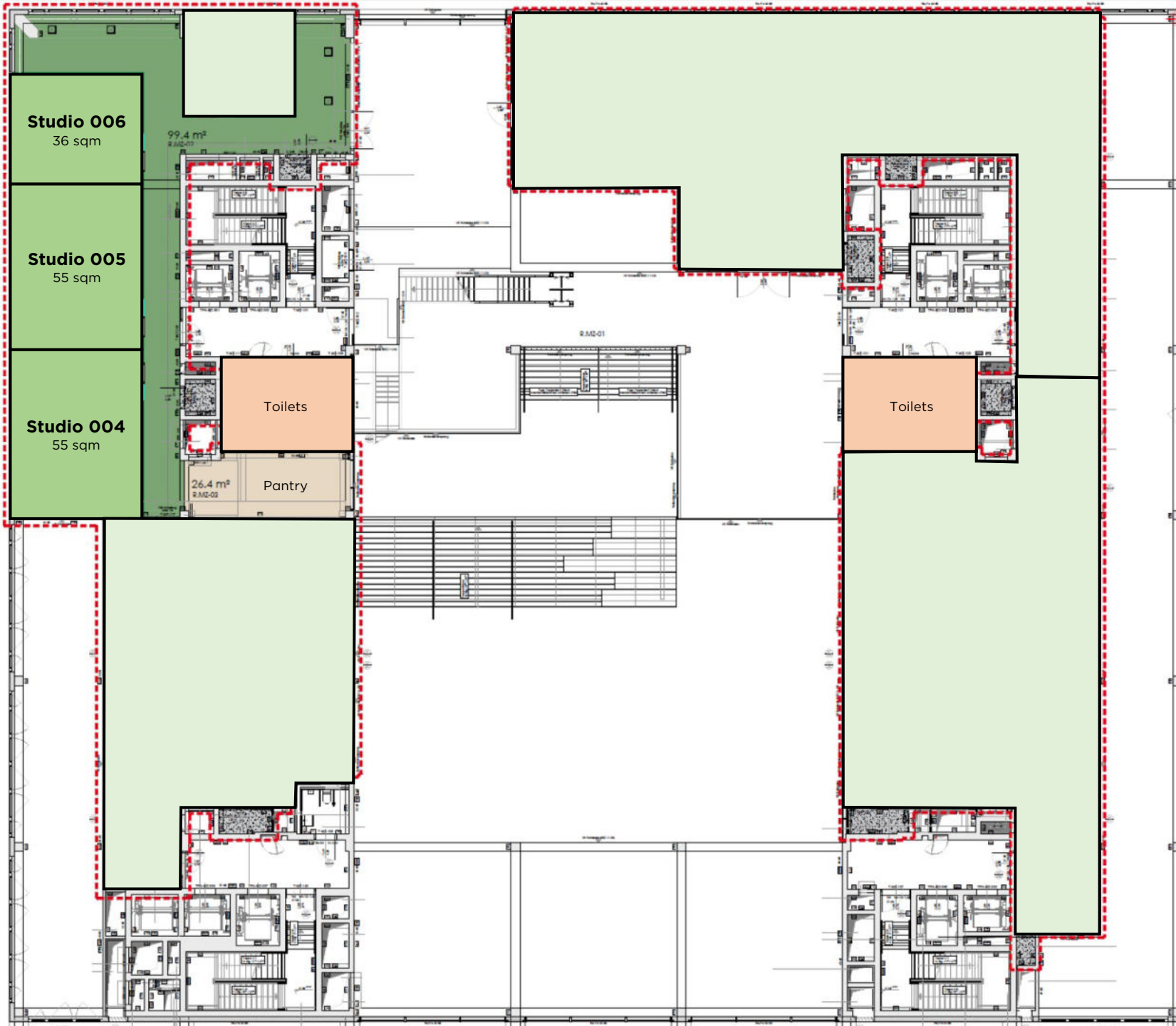
1-year lease	<b>33,50</b>	EUR
3-year lease	<b>31,50</b>	EUR
5-year lease	<b>28,50</b>	EUR

\* Price increase per year based on the greater of CPI or 3%

**Monthly costs per sqm**

Service charges	<b>6,75</b>	EUR
Energy charges	<b>1,50</b>	EUR

\* Post-calculated



HafenCity



Studio **004-006**  
Sqm (LFA) **146**  
Floor **Mezzanine**

**Rent per sqm per month**

1-year lease	<b>37,50</b>	EUR
3-year lease	<b>35,50</b>	EUR
5-year lease	<b>33,50</b>	EUR

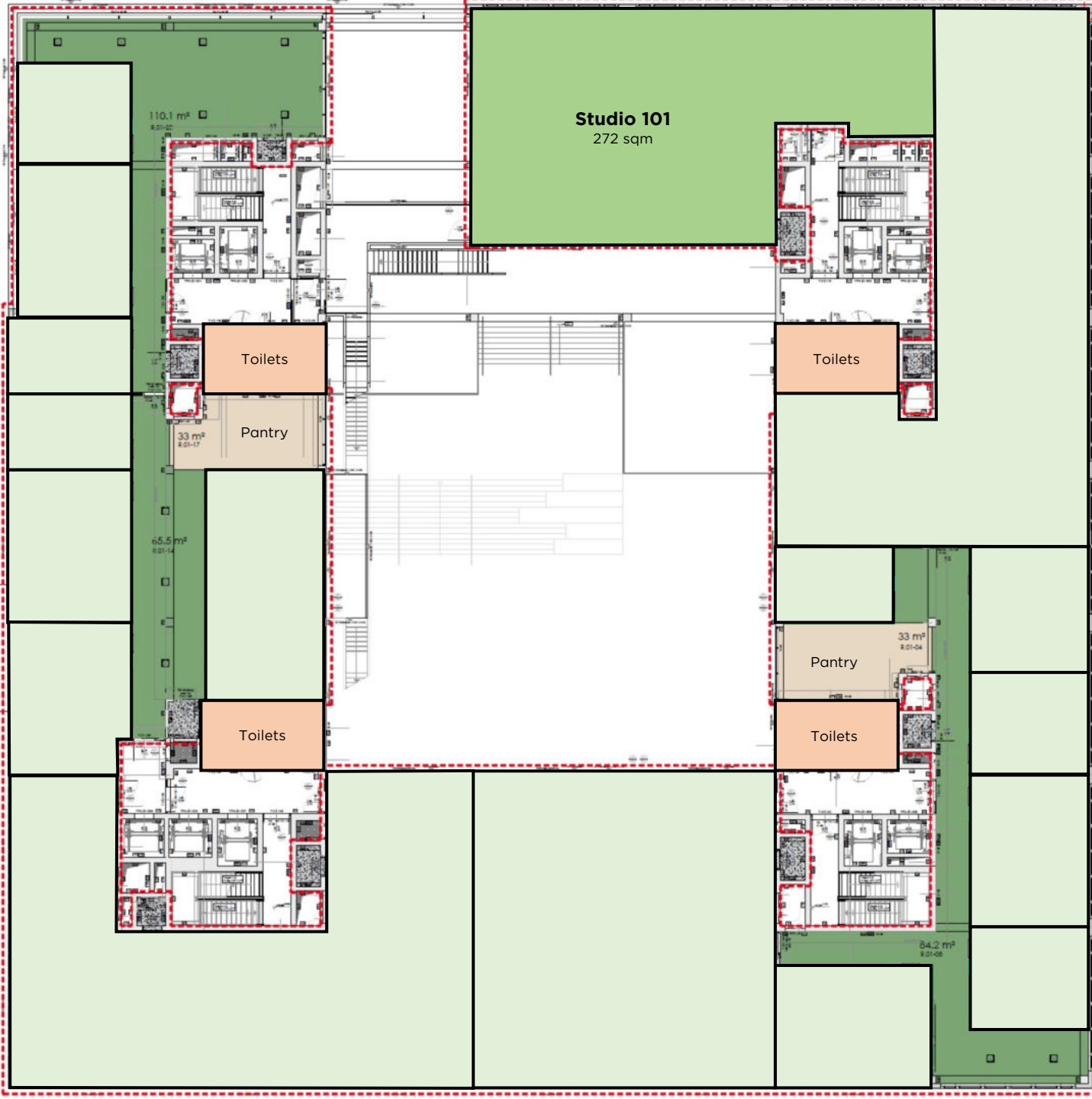
\* Price increase per year based on the greater of CPI or 3%

**Monthly costs per sqm**

Service charges	<b>6,75</b>	EUR
Energy charges	<b>1,50</b>	EUR

\* Post-calculated





HafenCity



Studio **101**  
Sqm (LFA) **272**  
Floor **First floor**

**Rent per sqm per month**

1-year lease	<b>33,50</b>	EUR
3-year lease	<b>31,50</b>	EUR
5-year lease	<b>28,50</b>	EUR

\* Price increase per year based on the greater of CPI or 3%

**Monthly costs per sqm**

Service charges	<b>6,75</b>	EUR
Energy charges	<b>1,50</b>	EUR

\* Post-calculated

HafenCity



Studio **102**  
Sqm (LFA) **317**  
Floor **First floor**

**Rent per sqm per month**

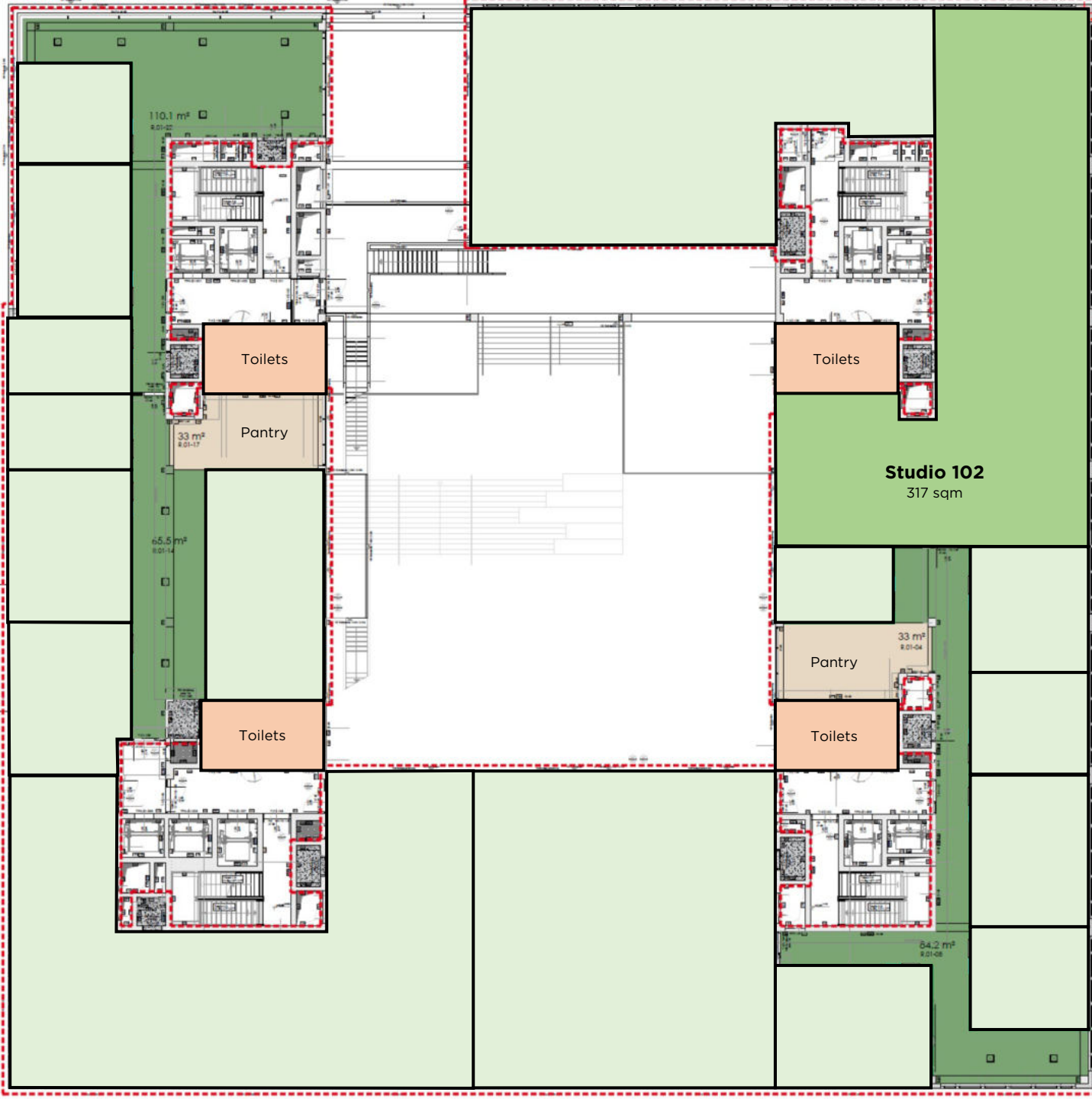
1-year lease	<b>33,50</b>	EUR
3-year lease	<b>31,50</b>	EUR
5-year lease	<b>28,50</b>	EUR

\* Price increase per year based on the greater of CPI or 3%

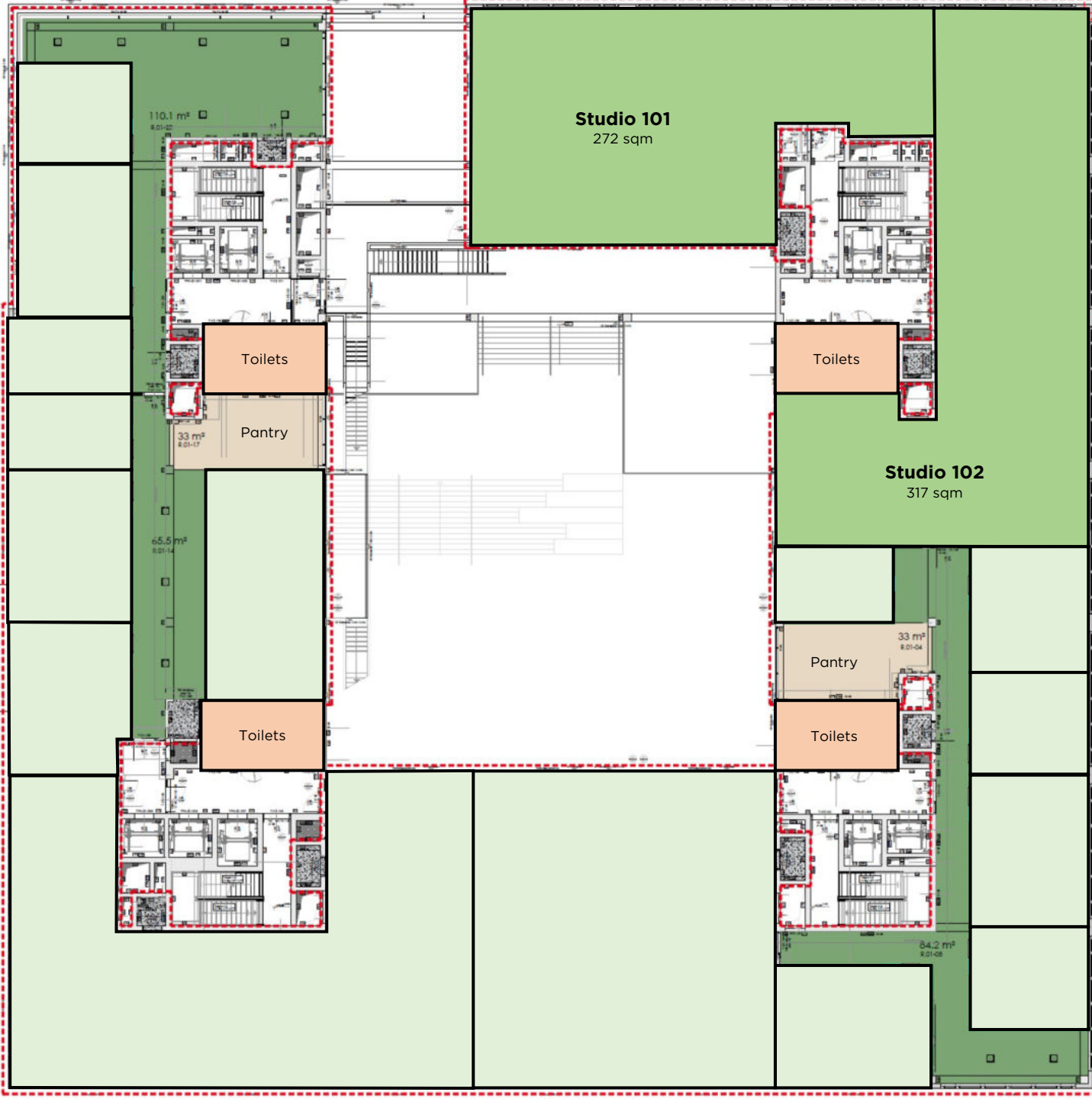
**Monthly costs per sqm**

Service charges	<b>6,75</b>	EUR
Energy charges	<b>1,50</b>	EUR

\* Post-calculated







HafenCity



Studio **101-102**  
Sqm (LFA) **589**  
Floor **First floor**

**Rent per sqm per month**

1-year lease **33,50** EUR  
3-year lease **31,50** EUR  
5-year lease **28,50** EUR

\* Price increase per year based on the greater of CPI or 3%

**Monthly costs per sqm**

Service charges **6,75** EUR  
Energy charges **1,50** EUR

\* Post-calculated

HafenCity



Studio **103-105**  
Sqm (LFA) **109**  
Floor **First floor**

**Rent per sqm per month**

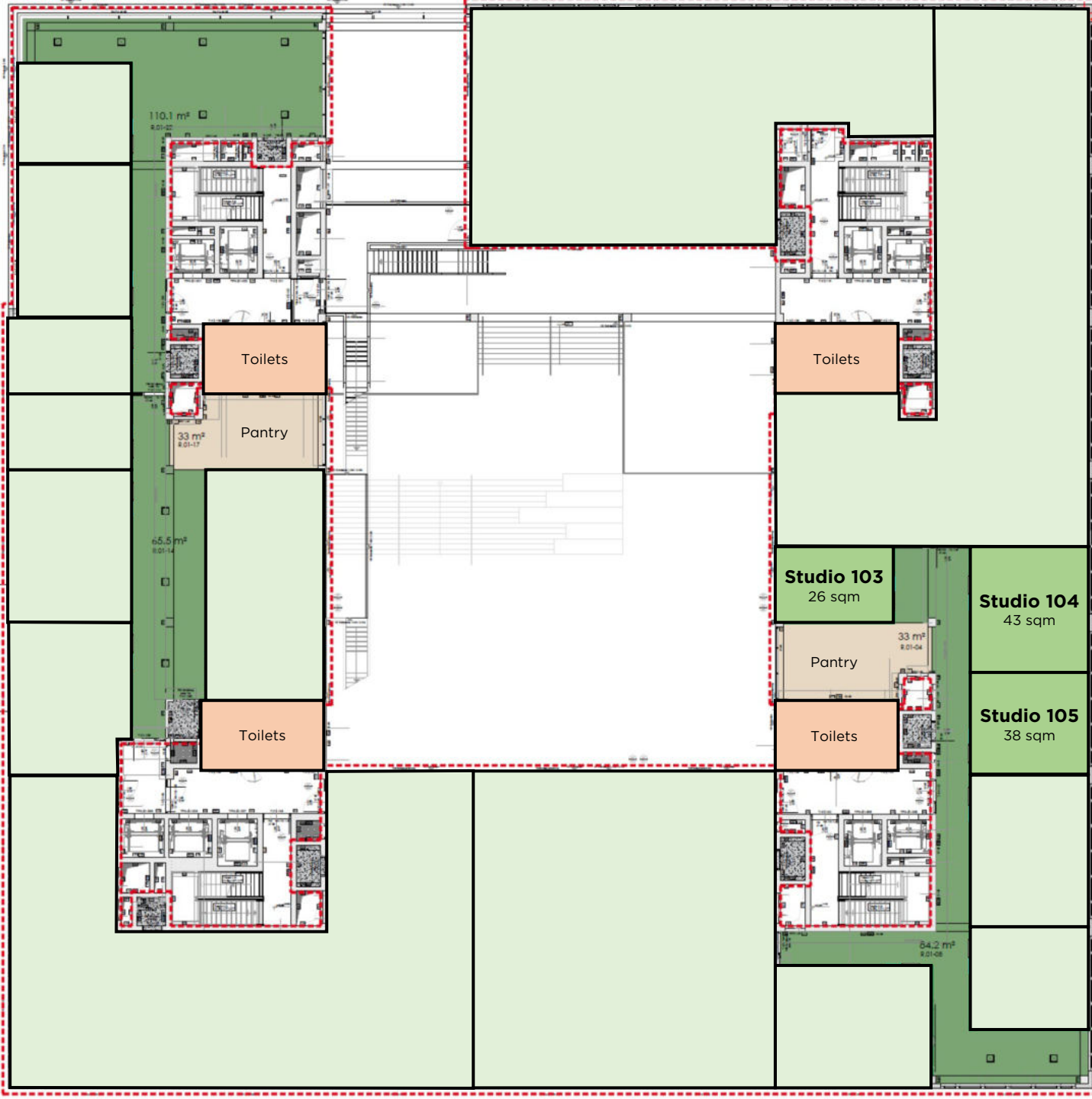
1-year lease	<b>37,50</b>	EUR
3-year lease	<b>35,50</b>	EUR
5-year lease	<b>33,50</b>	EUR

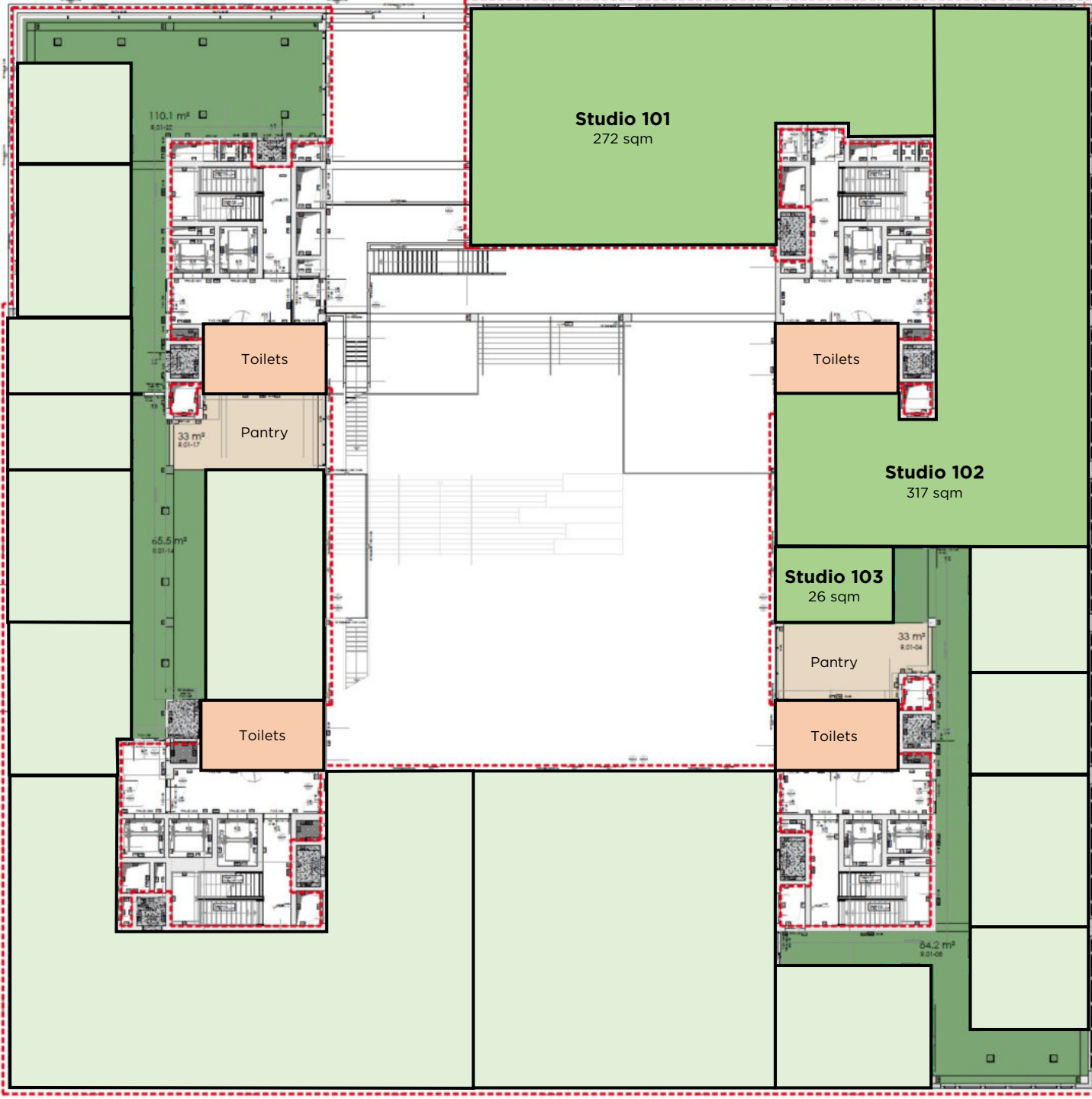
\* Price increase per year based on the greater of CPI or 3%

**Monthly costs per sqm**

Service charges	<b>6,75</b>	EUR
Energy charges	<b>1,50</b>	EUR

\* Post-calculated





HafenCity



Studio **101-103**  
Sqm (LFA) **615**  
Floor **First floor**

**Rent per sqm per month**

1-year lease **33,50** EUR  
3-year lease **31,50** EUR  
5-year lease **28,50** EUR

\* Price increase per year based on the greater of CPI or 3%

**Monthly costs per sqm**

Service charges **6,75** EUR  
Energy charges **1,50** EUR

\* Post-calculated



HafenCity



Studio **102-103**  
Sqm (LFA) **343**  
Floor **First floor**

**Rent per sqm per month**

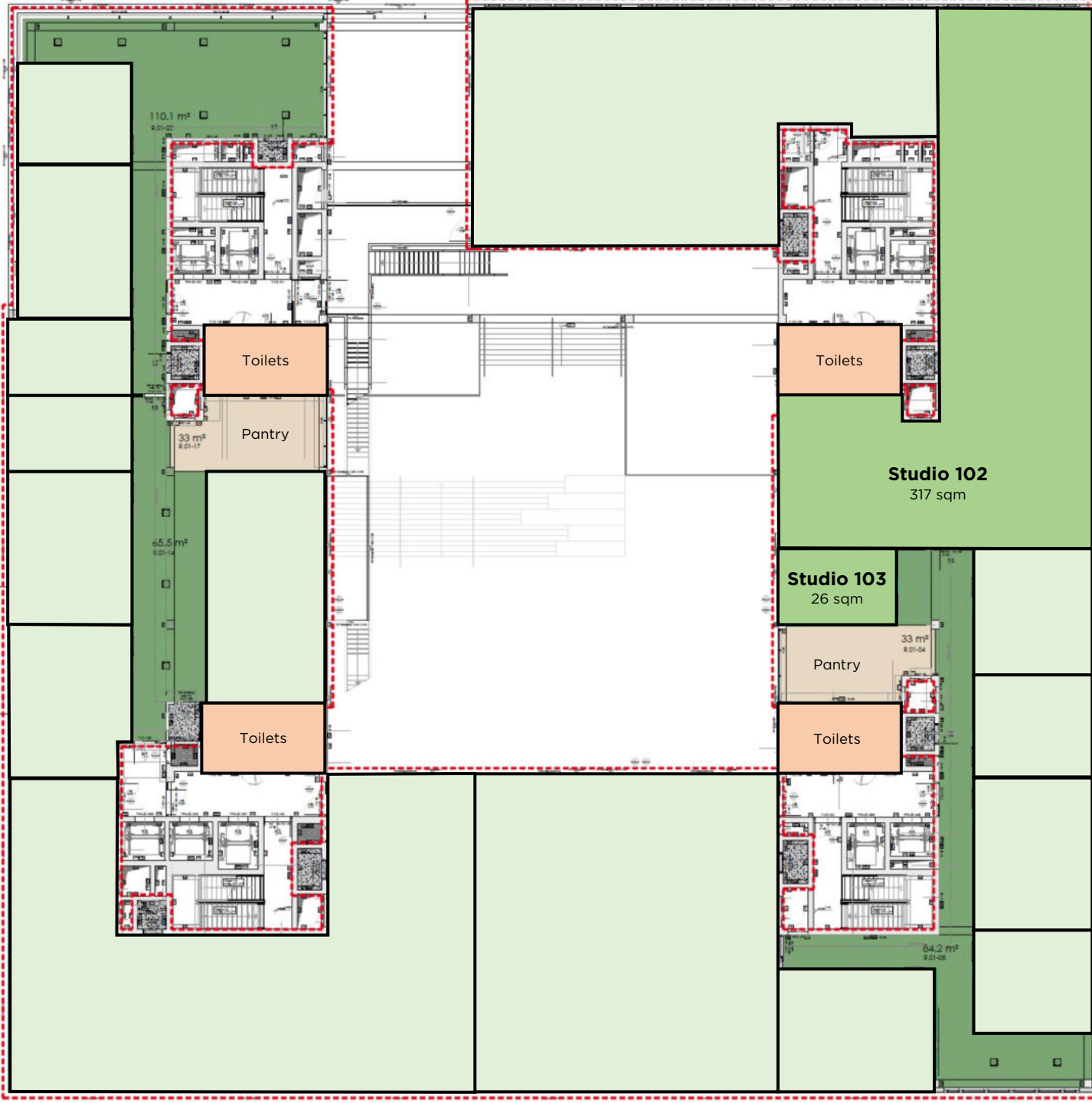
1-year lease **33,50** EUR  
3-year lease **31,50** EUR  
5-year lease **28,50** EUR

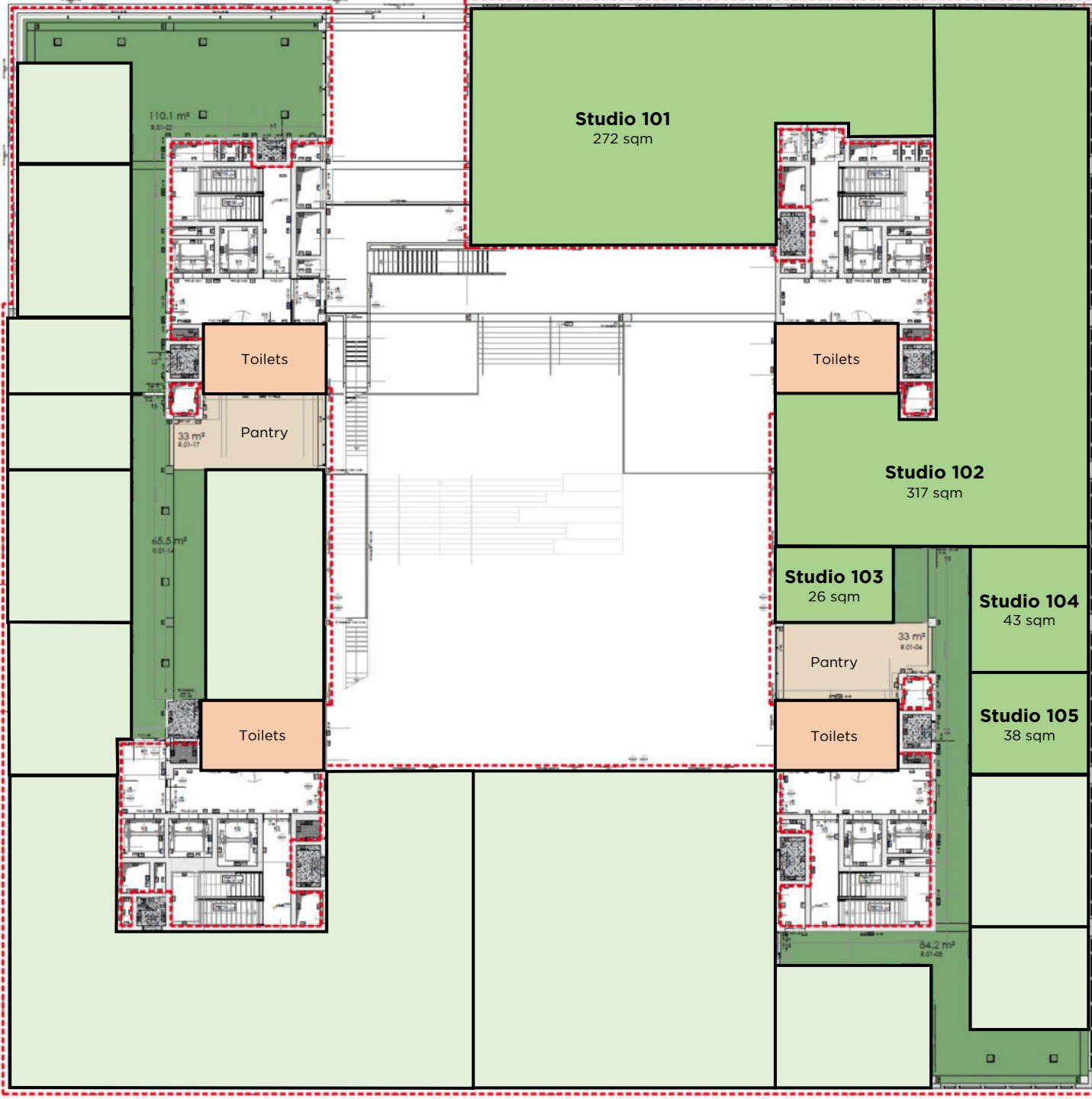
\* Price increase per year based on the greater of CPI or 3%

**Monthly costs per sqm**

Service charges **6,75** EUR  
Energy charges **1,50** EUR

\* Post-calculated





HafenCity



Studio **101-105**  
Sqm (LFA) **698**  
Floor **First floor**

**Rent per sqm per month**

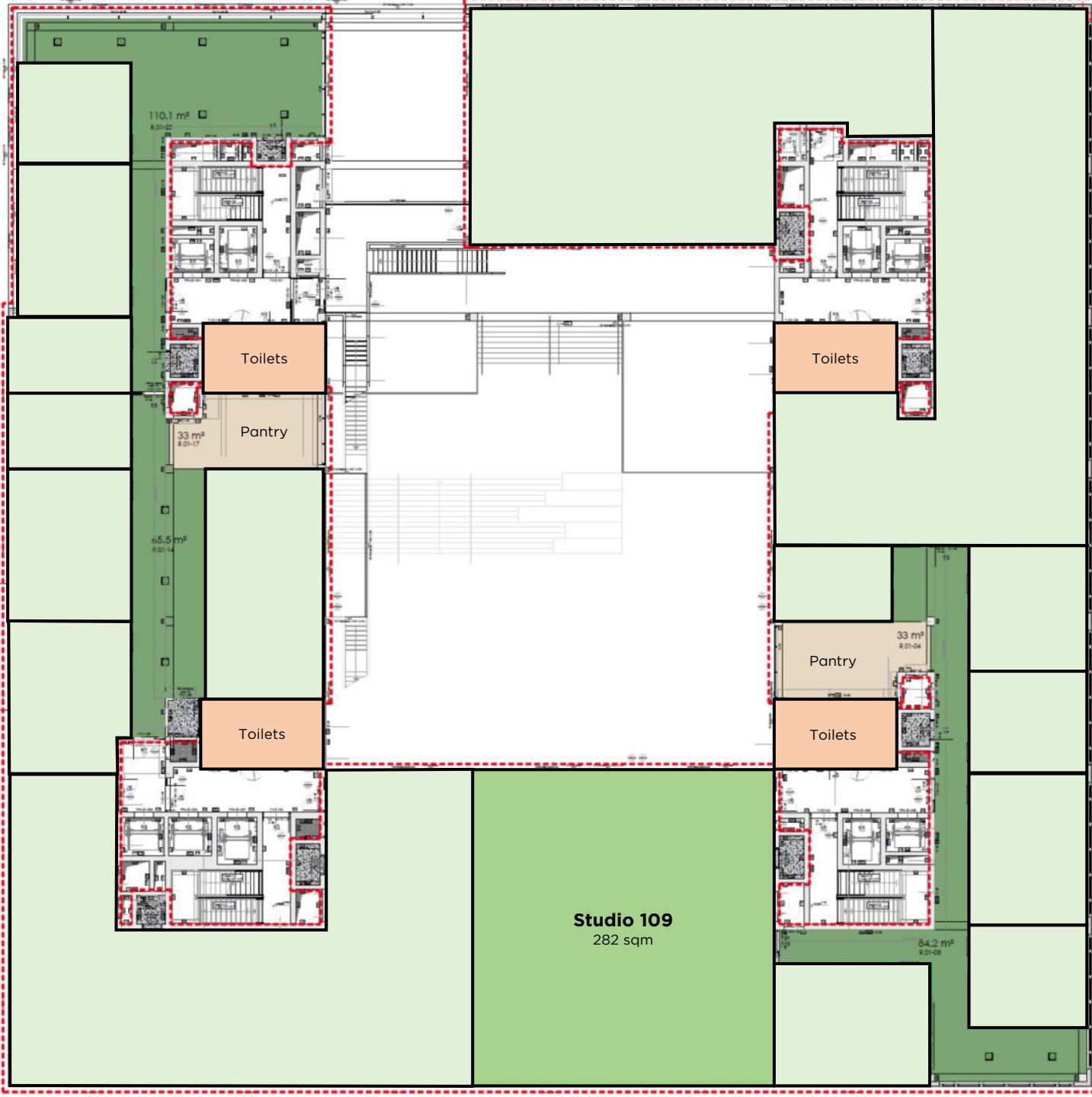
1-year lease **33,50** EUR  
3-year lease **31,50** EUR  
5-year lease **28,50** EUR

\* Price increase per year based on the greater of CPI or 3%

**Monthly costs per sqm**

Service charges **6,75** EUR  
Energy charges **1,50** EUR

\* Post-calculated



HafenCity



Studio **109**  
Sqm (LFA) **282**  
Floor **First floor**

**Rent per sqm per month**

1-year lease **33,50** EUR  
3-year lease **31,50** EUR  
5-year lease **28,50** EUR

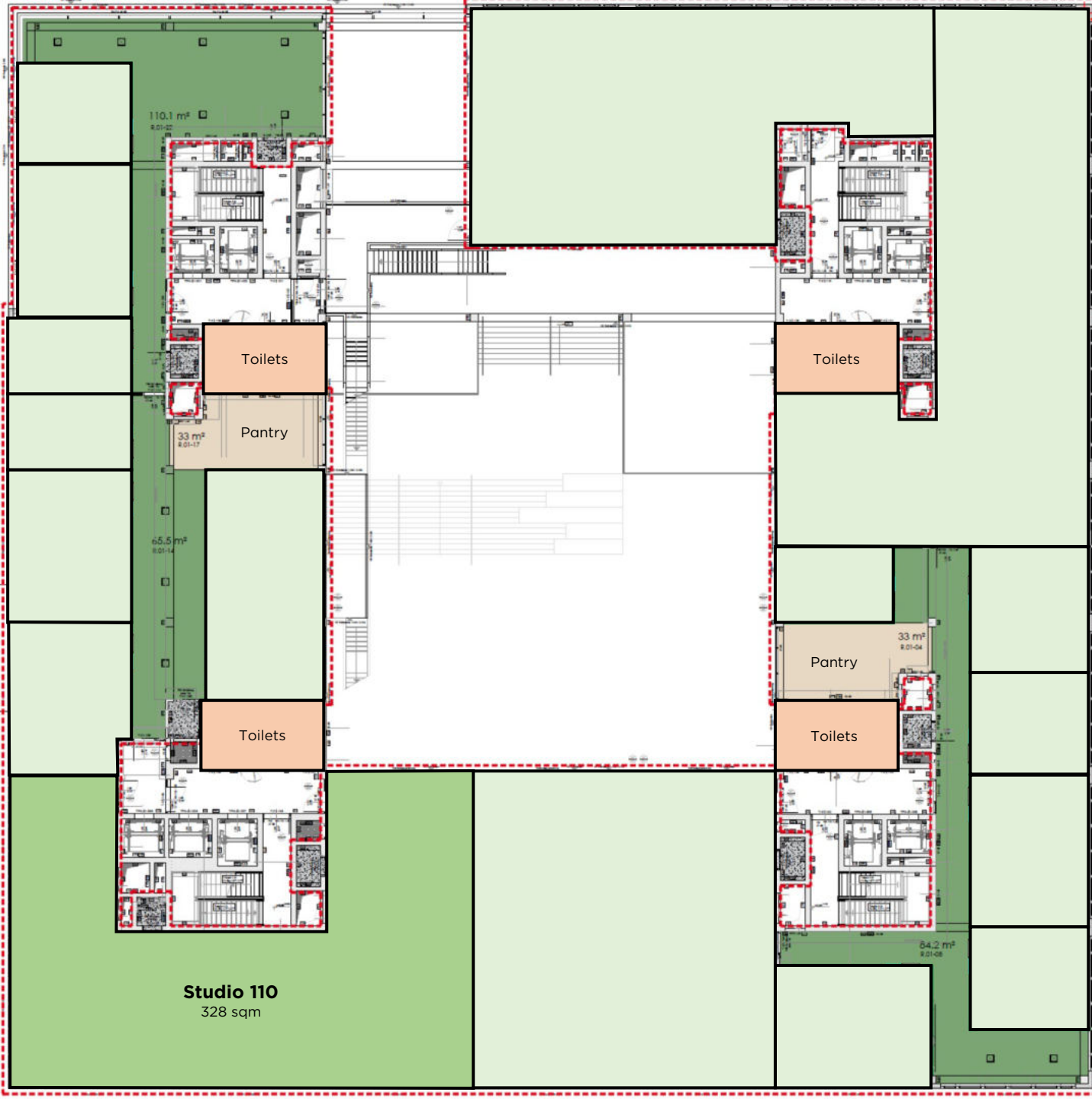
\* Price increase per year based on the greater of CPI or 3%

**Monthly costs per sqm**

Service charges **6,75** EUR  
Energy charges **1,50** EUR

\* Post-calculated





HafenCity



Studio **110**  
Sqm (LFA) **328**  
Floor **First floor**

**Rent per sqm per month**

1-year lease **33,50** EUR  
3-year lease **31,50** EUR  
5-year lease **28,50** EUR

\* Price increase per year based on the greater of CPI or 3%

**Monthly costs per sqm**

Service charges **6,75** EUR  
Energy charges **1,50** EUR

\* Post-calculated

HafenCity



Studio **109-110**  
Sqm (LFA) **610**  
Floor **First floor**

**Rent per sqm per month**

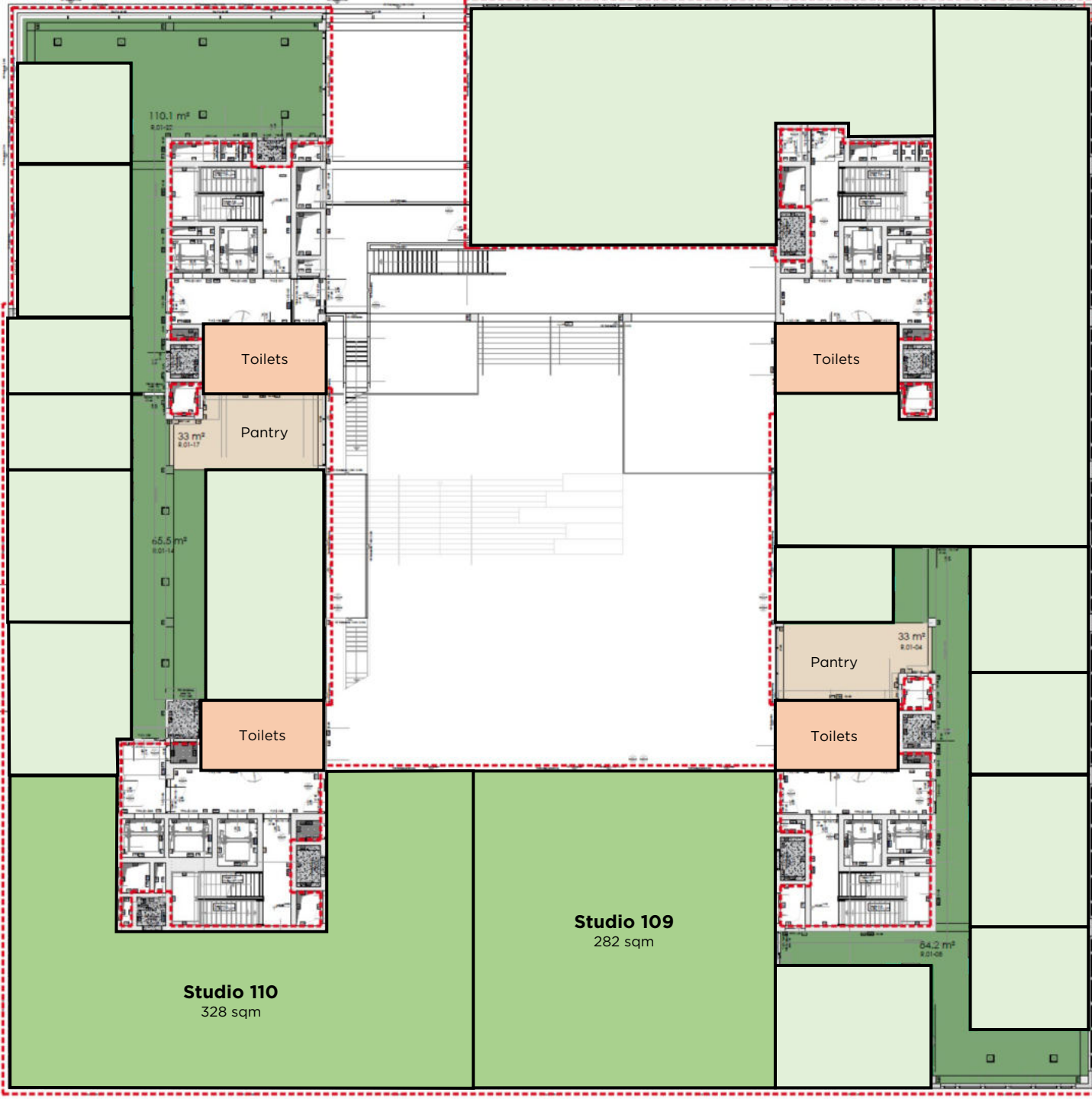
1-year lease	<b>33,50</b>	EUR
3-year lease	<b>31,50</b>	EUR
5-year lease	<b>28,50</b>	EUR

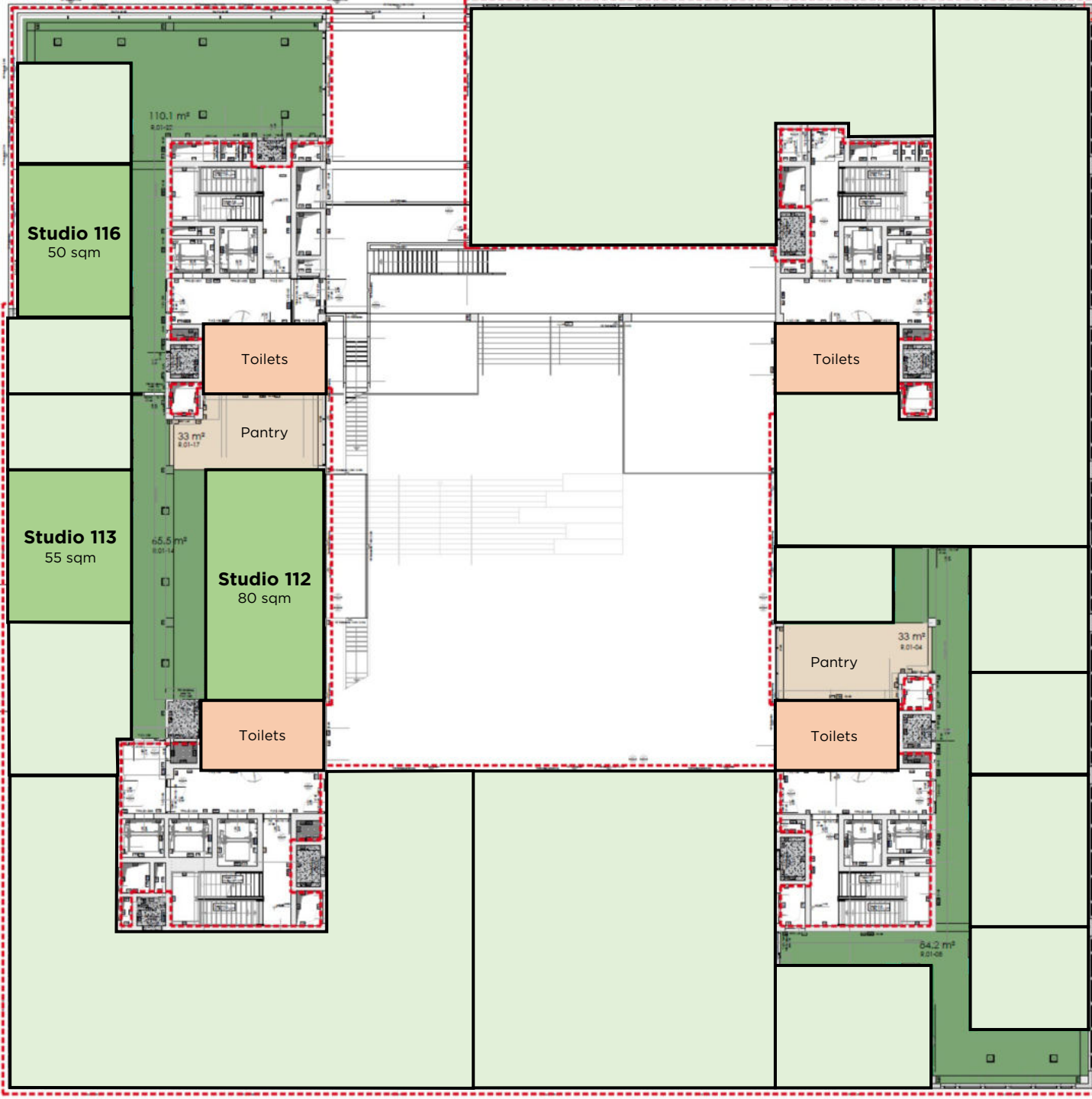
\* Price increase per year based on the greater of CPI or 3%

**Monthly costs per sqm**

Service charges	<b>6,75</b>	EUR
Energy charges	<b>1,50</b>	EUR

\* Post-calculated





HafenCity



Studio **112-113, 116**  
Sqm (LFA) **185**  
Floor **First floor**

**Rent per sqm per month**

1-year lease **35,50** EUR  
3-year lease **33,50** EUR  
5-year lease **31,50** EUR

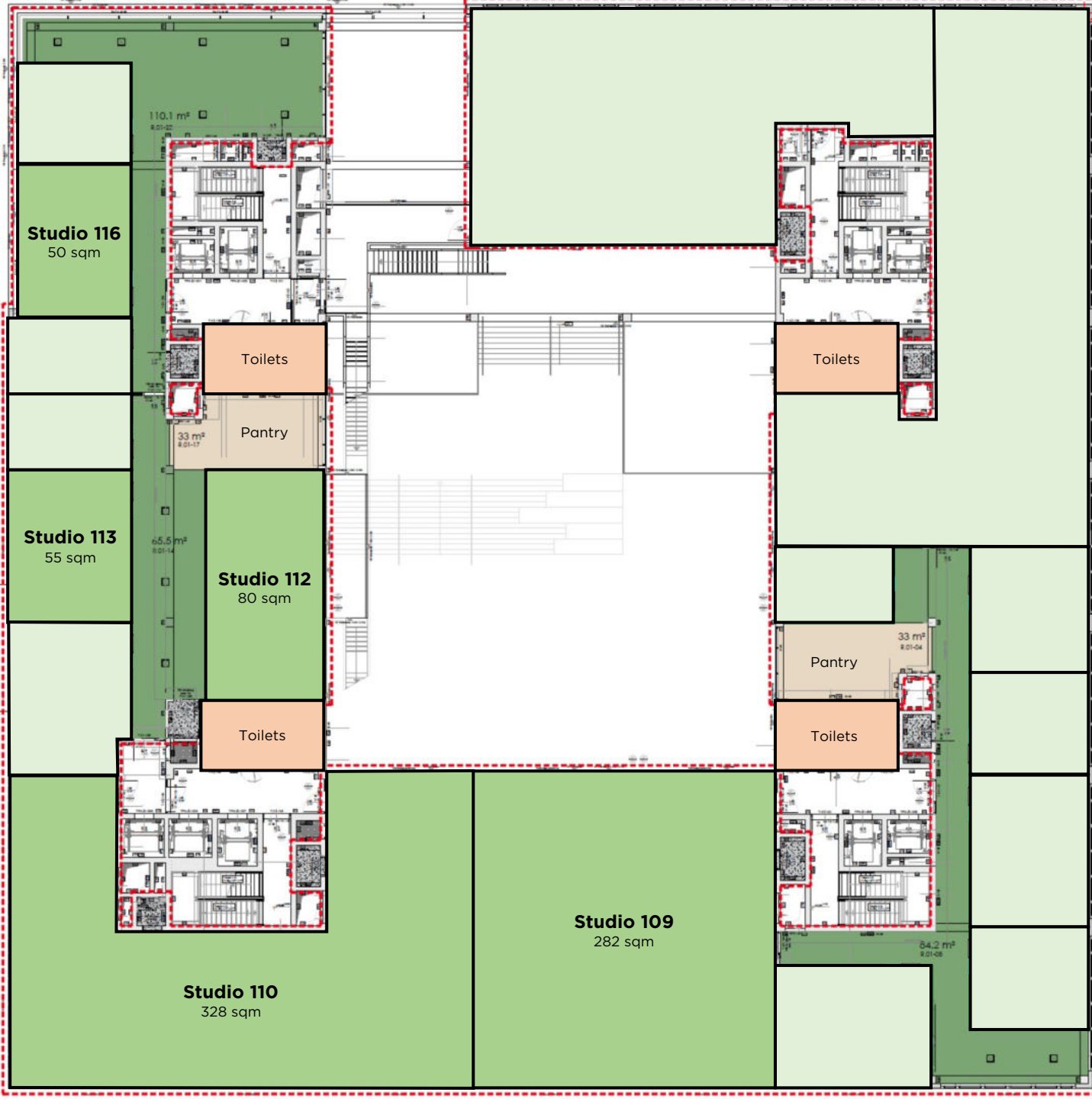
\* Price increase per year based on the greater of CPI or 3%

**Monthly costs per sqm**

Service charges **6,75** EUR  
Energy charges **1,50** EUR

\* Post-calculated





HafenCity



Studio **109-110, 112-113, 116**  
Sqm (LFA) **795**  
Floor **First floor**

**Rent per sqm per month**

1-year lease **33,50** EUR  
3-year lease **31,50** EUR  
5-year lease **28,50** EUR

\* Price increase per year based on the greater of CPI or 3%

**Monthly costs per sqm**

Service charges **6,75** EUR  
Energy charges **1,50** EUR

\* Post-calculated