

# Kellergeschoss

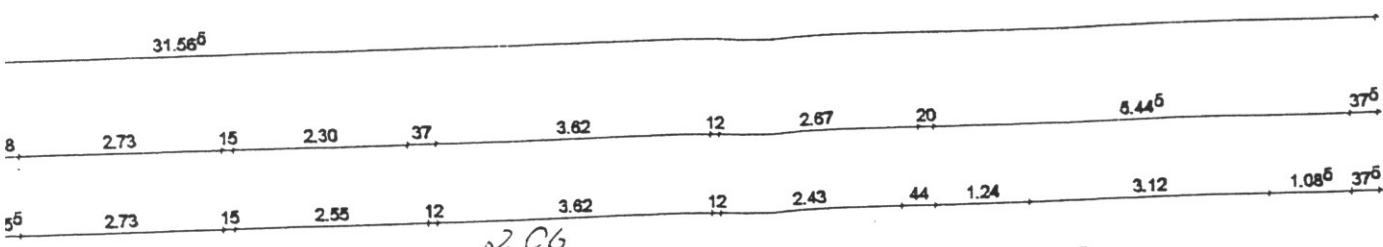




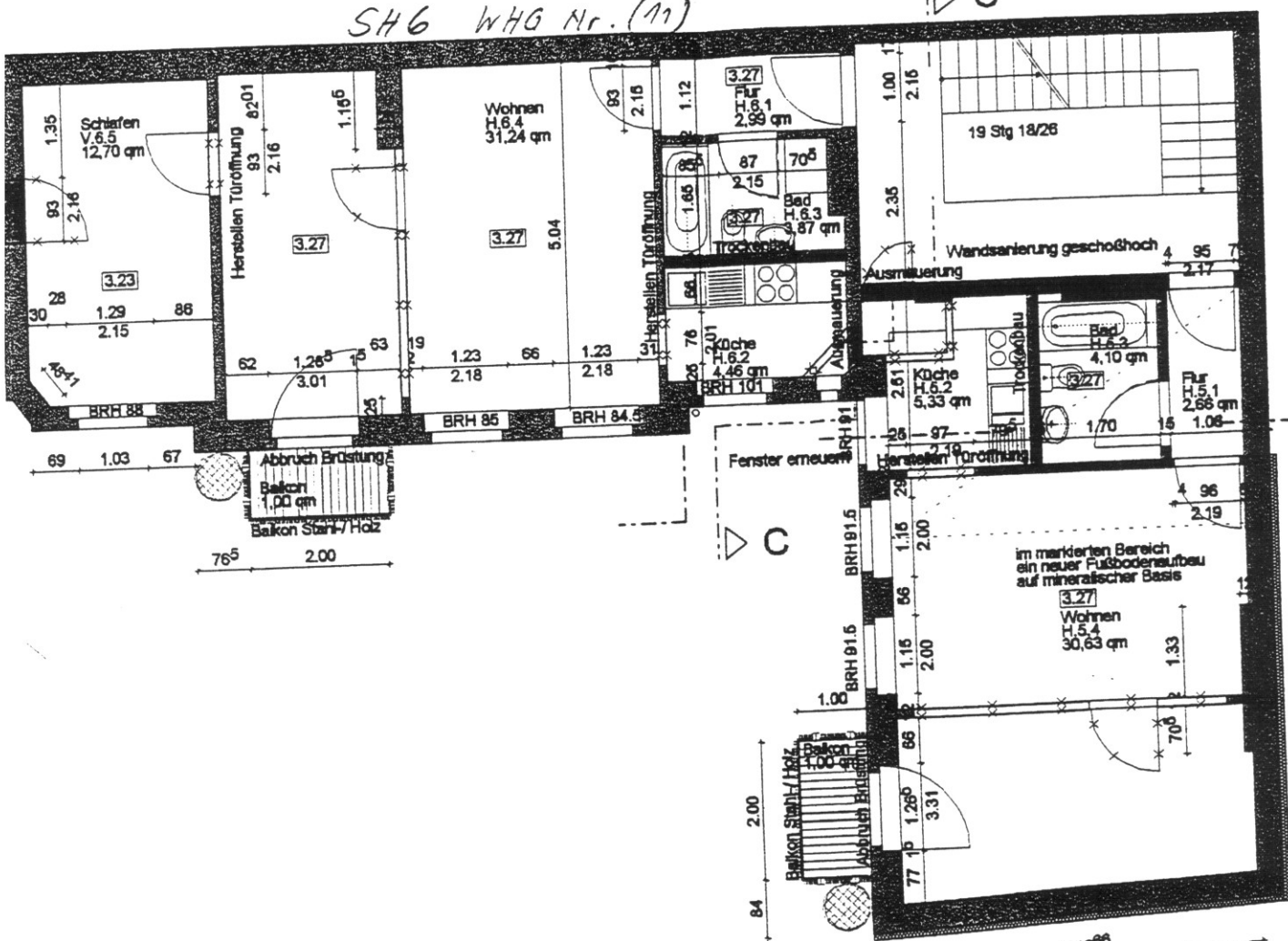








2.06  
SHG WHG Nr. (11)



HH 5 2.06  
WHG Nr. (12)

# 2. Obergescho



B

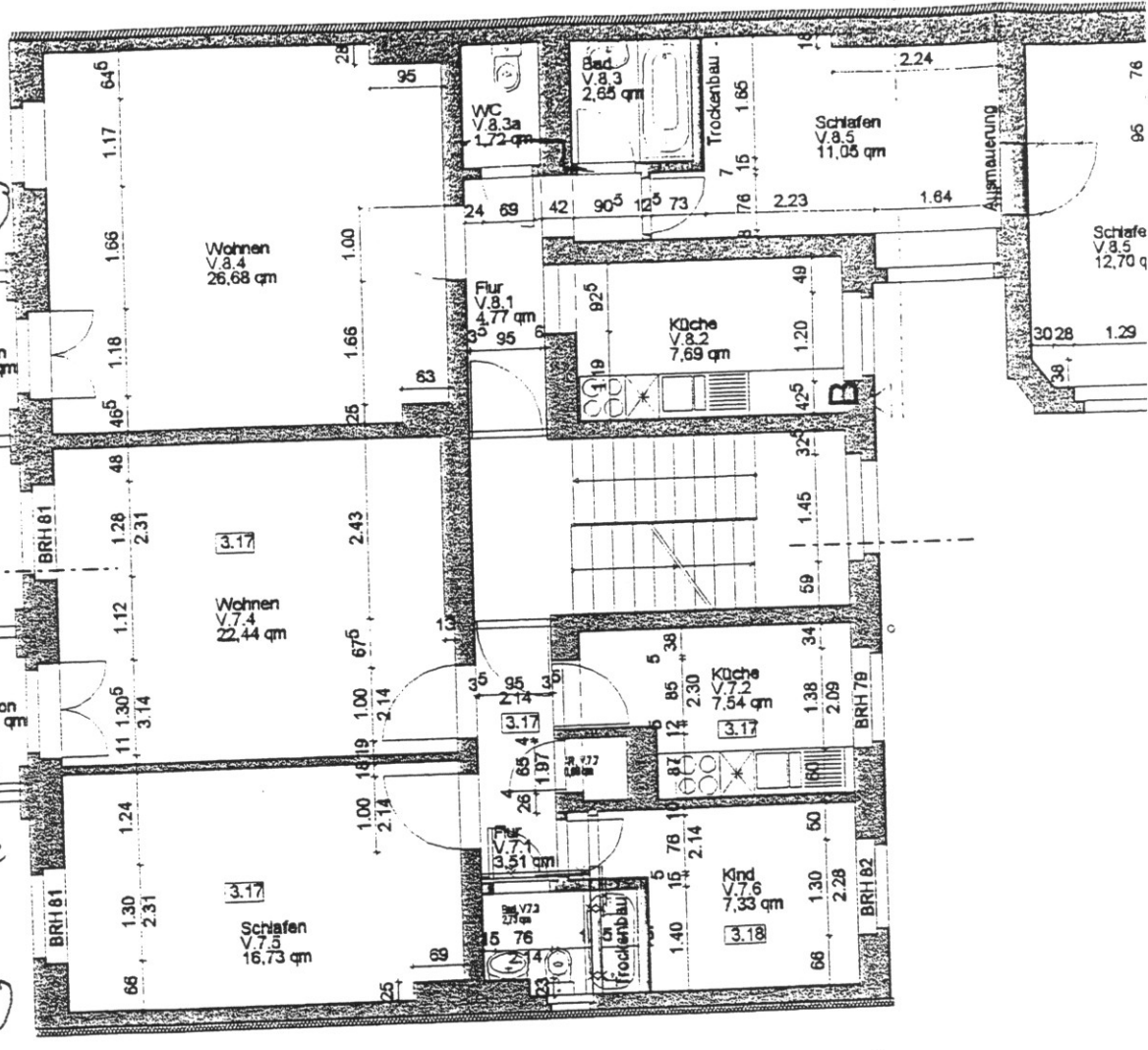
46 5.28 27 1.04<sup>5</sup> 42 3.52<sup>5</sup> 42 1.79 35<sup>5</sup> 2.73

18<sup>5</sup>  
5.12  
20  
4.20<sup>5</sup>  
11  
2.32  
14  
3.44  
21  
2.44  
15  
4.4  
1.17  
21  
2.11<sup>5</sup>  
24  
2.36<sup>5</sup>  
10  
2.46<sup>5</sup>  
10  
3.41<sup>5</sup>  
24  
2.71  
15  
1.66  
24

3.0G/Li  
VH 8  
WHG Nr. (14)

A

3.0G/K  
VH 7  
WHG Nr. (13)

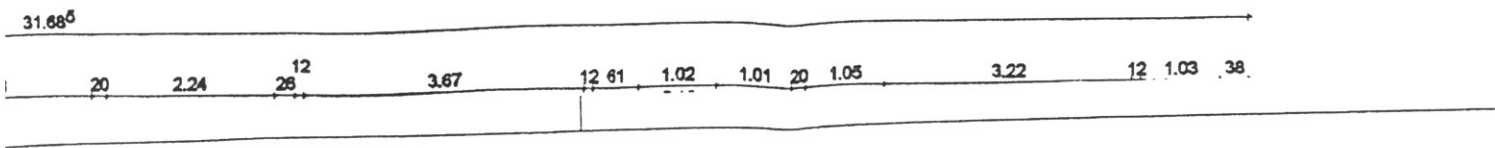


45 5.16 40 1.02 38 3.59 42  
45 5.28 27 1.02 38 58 41 2.60 42  
57 5.28 27 1.45 12 3.42 42  
11.53

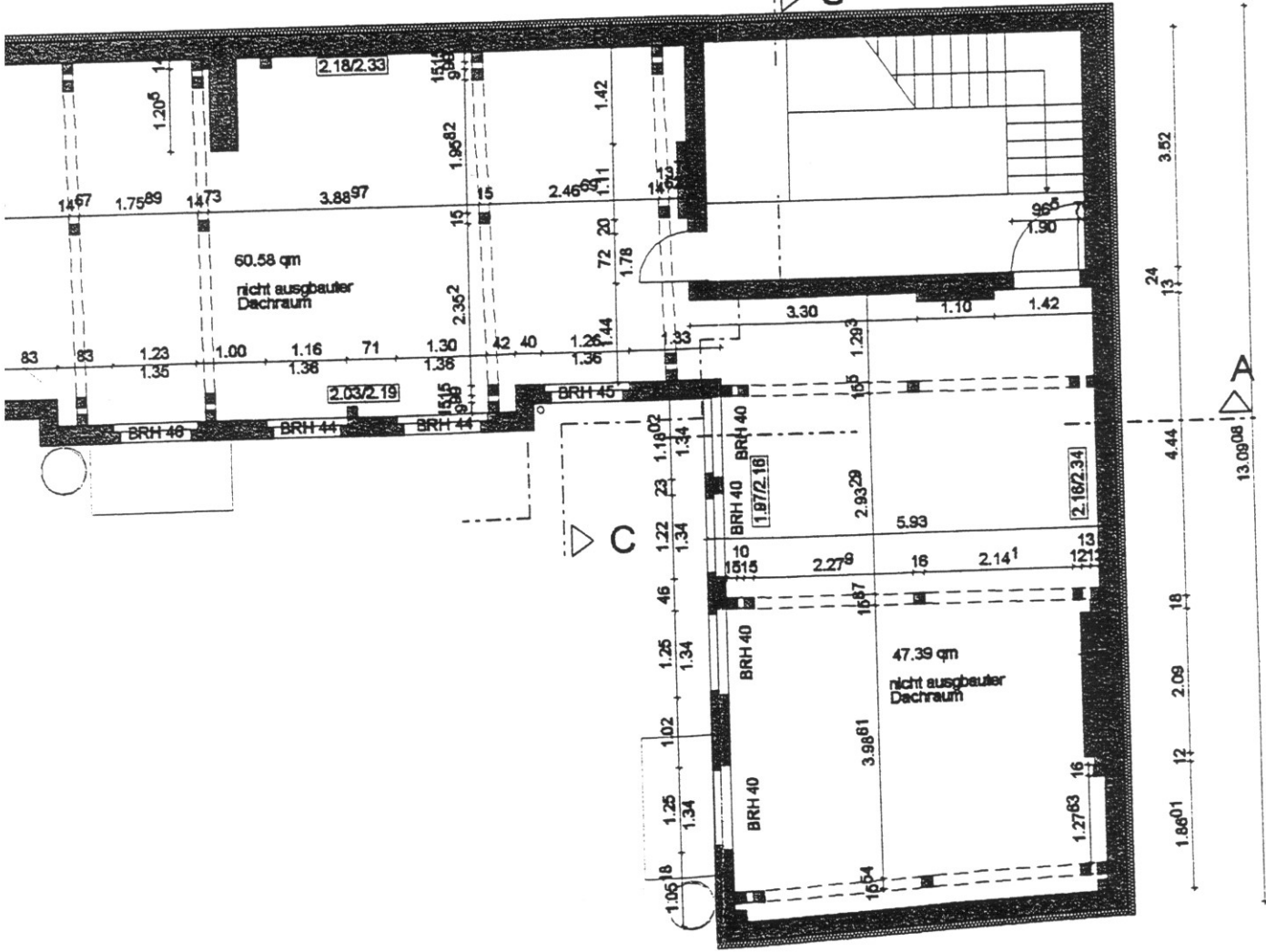
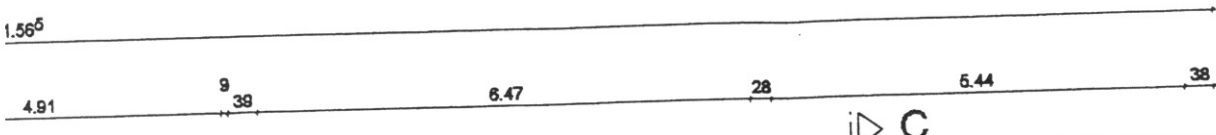
3.0G







D G



Dachgeschoss