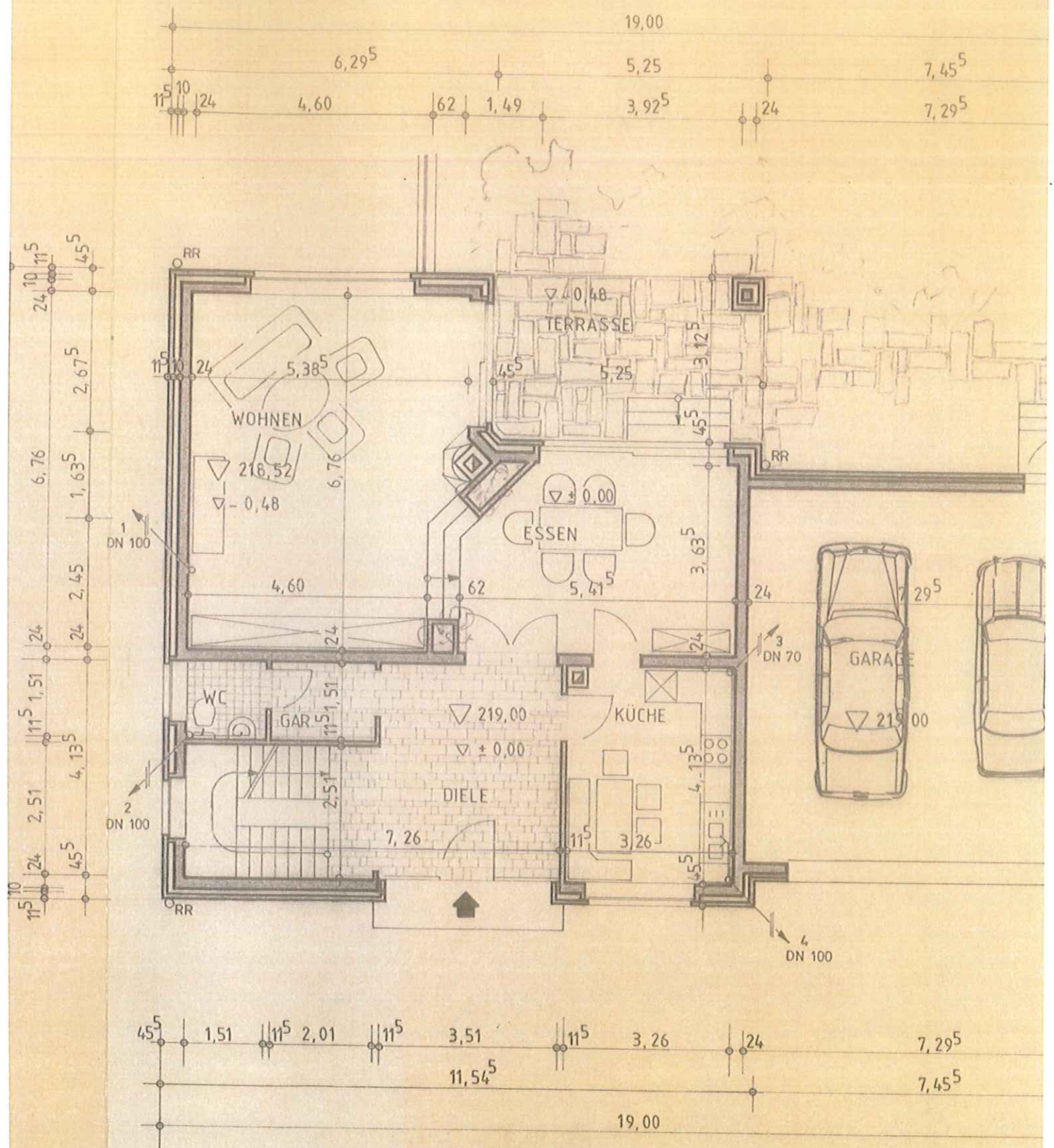
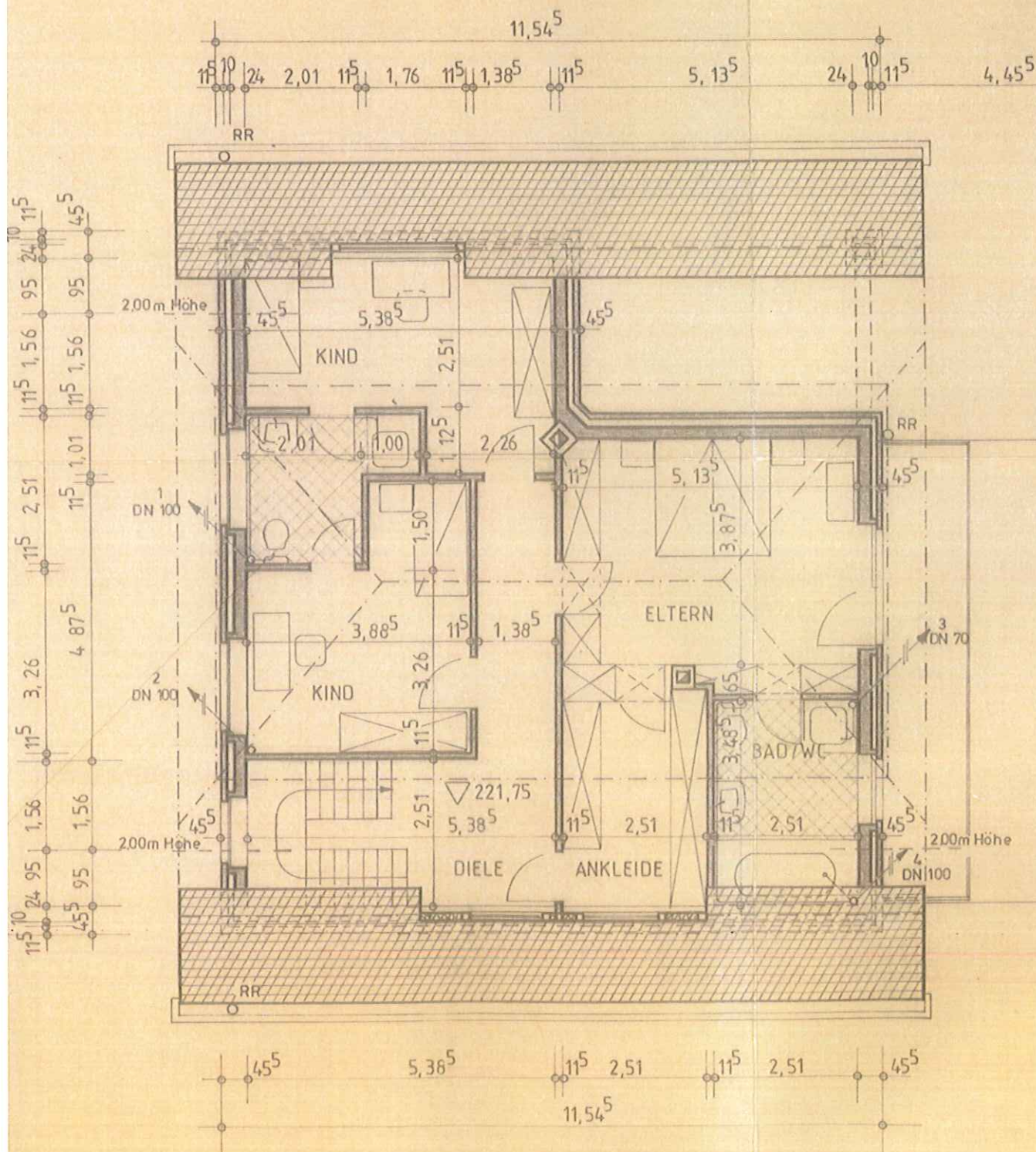


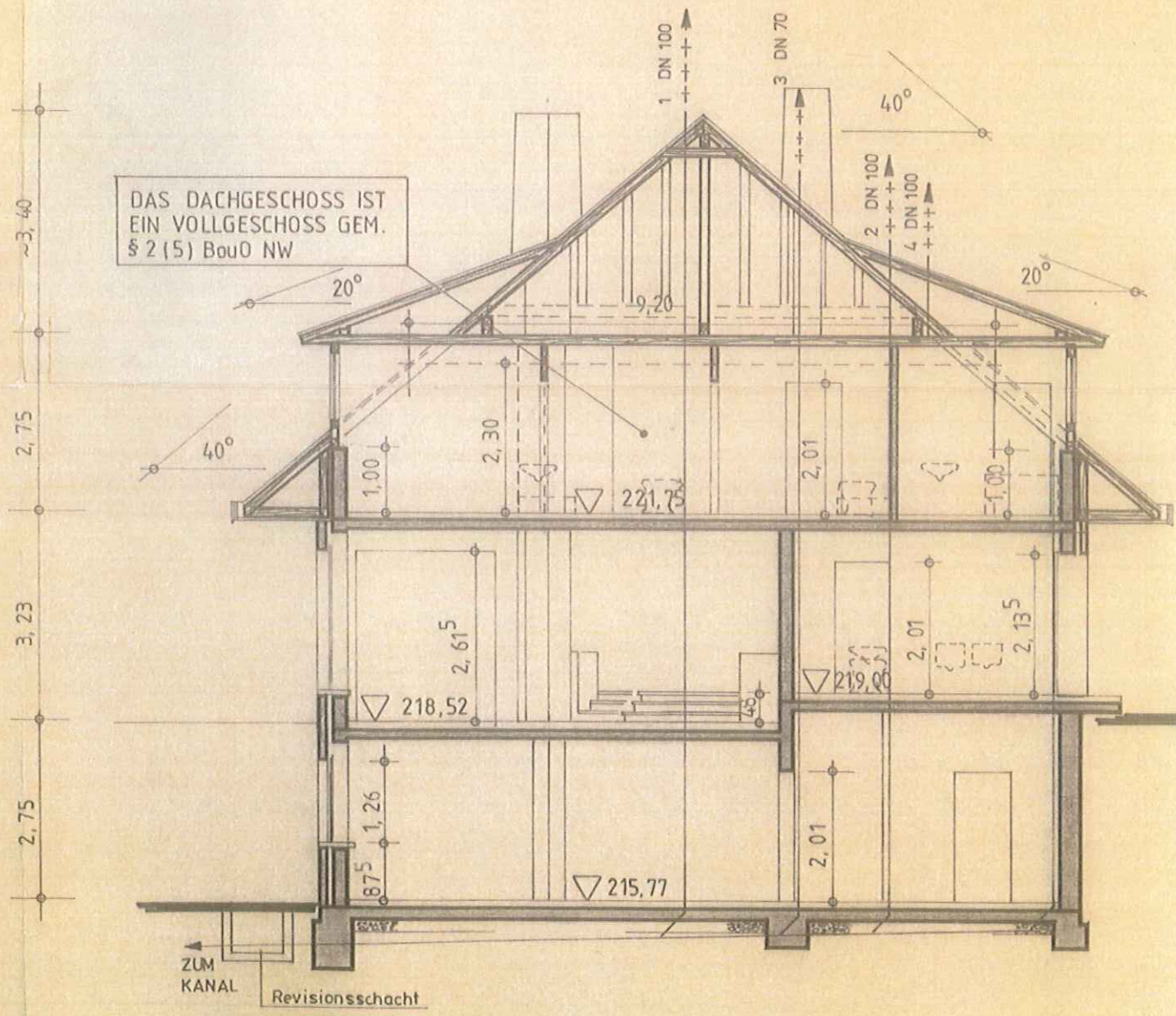
# Kellergeschoss



# Erdgeschoss



# Dachgeschoss



**Querschnitt**

## WOHNFLÄCHENBERECHNUNG

### Erdgeschoß

			<u>× 0,97</u>
Diele	$7,26 \times 2,51 = 18,22$ $+ 3,51 \times 1,62^5 = 5,70$ $- 1,00 \times 2,51 = 2,51$ $- 1,00 \times 1,85 = 1,85$ $- 1,00 \times 1,85 = 1,85$	= 17,91 qm	= 17,18 qm
Garderobe	$2,01 \times 1,51$	= 3,04 qm	= 2,95 qm
WC	$1,51 \times 1,51$	= 2,28 qm	= 2,21 qm
Wohnen	$5,38^5 \times 2,67^5 = 14,41$ $+ \frac{5,38^5 + 4,60}{2} \times 1,63^5 = 8,16$ $+ 4,60 \times 2,45 = 11,27$	= 33,84 qm	= 32,83 qm
Essen	$\frac{3,92^5 + 5,41^5}{2} \times 1,48^5 = 6,94$ $+ 5,41^5 \times 2,15 = 11,64$	= 18,58 qm	= 18,02 qm
Küche	$3,26 \times 4,13^5$	= 13,48 qm	= 13,08 qm
			<u>86,27 qm</u>

### Dachgeschoß

Diele	$5,38^5 \times 2,51 = 13,52$ $+ 1,38^5 \times 4,87^5 = 6,75$ $- 1,00 \times 2,51 = 2,51$ $- 1,00 \times 1,85 = 1,85$ $- 1,00 \times 1,60 = 1,60$	= 14,31 qm	= 13,88 qm
Kind	$3,88^5 \times 3,26 = 12,67$ $+ 1,76 \times 1,50 = 2,64$	= 15,31 qm	= 14,85 qm
DU/WC	$2,01 \times 2,51 = 5,05$ $+ 1,00 \times 1,01 = 1,01$	= 6,06 qm	= 5,88 qm
Kind	$5,38^5 \times 2,51 = 13,52$ $+ 2,26 \times 1,12^5 = 2,54$ $- 1,50 \times 0,95 \times 2 \times 1/2 = 1,43$	= 14,63 qm	= 14,19 qm
Eltern	$5,13^5 \times 3,87^5$	= 19,90 qm	= 19,30 qm
Bad/WC	$2,51 \times 3,48^5 = 8,75$ $- 2,51 \times 0,95 \times 1/2 = 1,19$	= 7,56 qm	= 7,33 qm
Ankleide	$2,51 \times 3,48^5$	= 8,75 qm	= 8,49 qm
			<u>83,92 qm</u>

### ZUSAMMENSTELLUNG:

Erdgeschoß	= 86,27 qm
Dachgeschoß	= 83,92 qm
	170,19 qm
- 10%	= 17,02 qm
	<u>153,17 qm</u>

~ 3,40

2,75

2,75

3,23