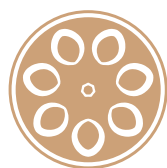
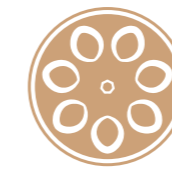


# ACCENTRO



OSLOER

CONDOS AT OSLOER STRASSE IN BERLIN-WEDDING

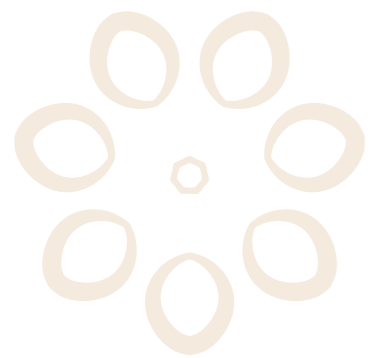


OSLOER

# CONTENT

Welcome .....	04
Wedding! International · Lively · a Colourful Mix of Life .....	07
Location Map .....	08
Wedding! Quality of Life in a Multicultural Environment .....	10
Old Building Charm in Central Wedding .....	15
Apartments with a Light and Open Character .....	16
Floor Plan Examples .....	18





WELCOME!  
HOŞ GELDİNİZ!  
WELCOME! BIENVENUE!

Wedding is considered one of the liveliest districts in the city and at the same time surprises with an abundance of parks and green spaces, which are generously spread across the district and form small oases in the city. Here you live in one of the most exciting neighbourhoods in the heart of the capital.

≈ 84,890

Inhabitants of Wedding

2 open-air pools



Berlin-Copenhagen long-distance  
cycle route leads through the Wedding



ice stadium

2 univer-  
sities

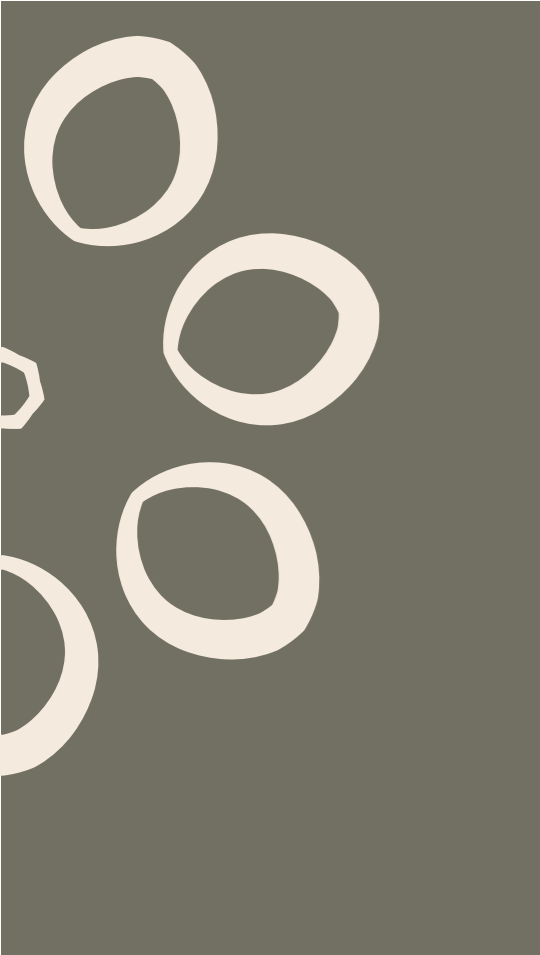
Schillerpark:  
UNESCO-World Heritage Site



drive-in  
cinema







# WEDDING!

INTERNATIONAL • LIVELY • A  
COLOURFUL MIX OF LIFE

Berlin Wedding can be described as an international and lively and colourful mixture. In the south, the idyllic north bank with the northern harbour forms the border of the district, which borders Reinickendorf to the north and merges with the Gesundbrunnen and Mitte to the east.

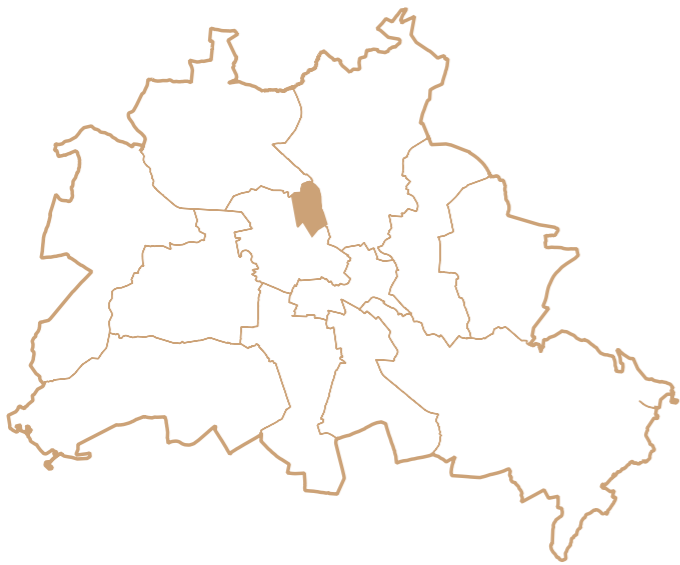
Wedding is crossed by many green areas, which are generously distributed throughout the district. Due to its forest character, the centrally located Volkspark Rehberge is a special attraction for walkers, joggers and picnics. In summer, the open-air cinema and the lake Plötzensee invite you.



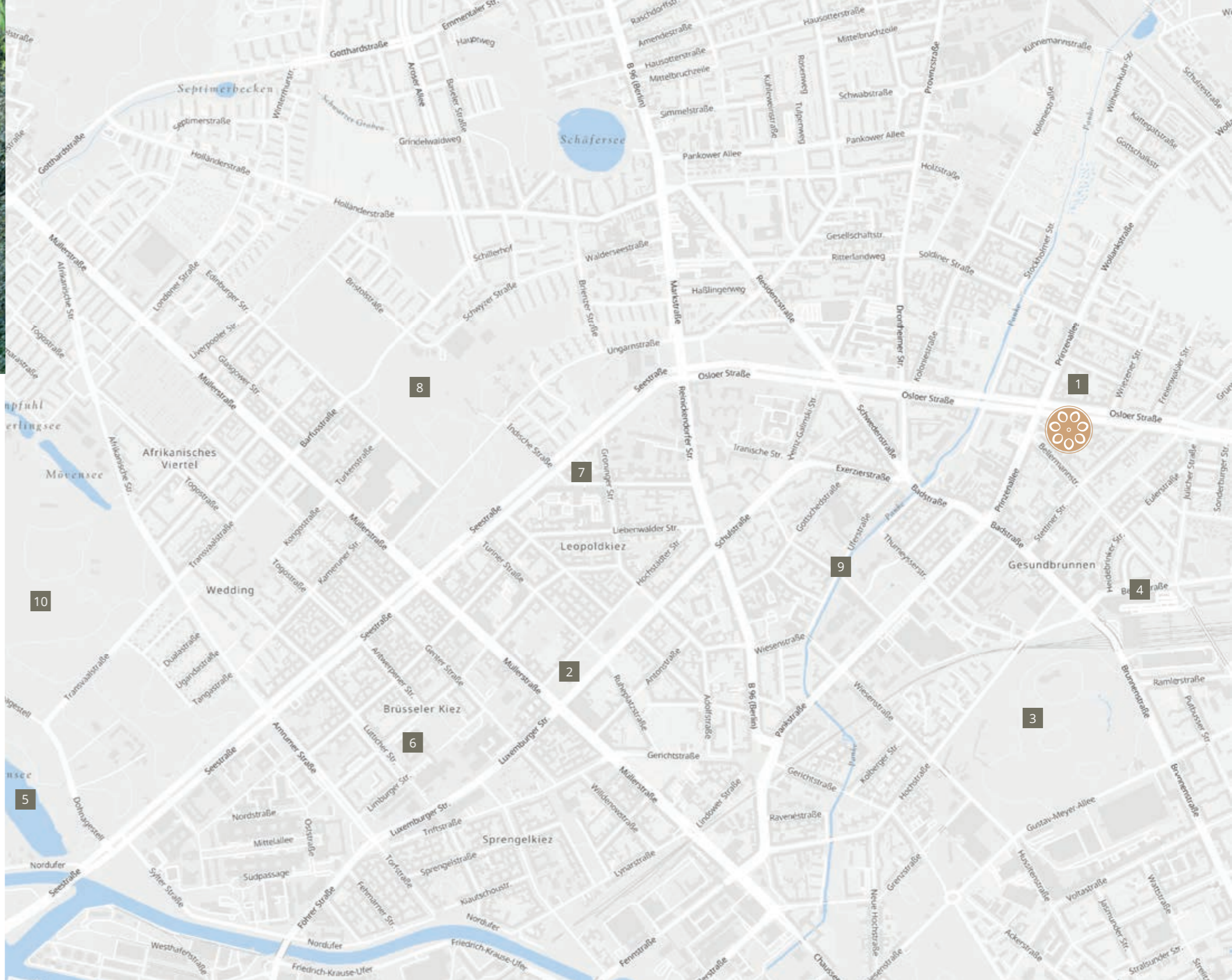


9

# LOCATION MAP



- 1 Labyrinth Kindermuseum Berlin (Children's Museum Berlin)
- 2 Leopoldplatz
- 3 Humboldthain (park)
- 4 Gesundbrunnen-Center
- 5 Plötzensee (lake)
- 6 Beuth Hochschule für Technik Berlin (University of Applied Sciences Berlin)
- 7 Osram-Höfe (incandescent factories)
- 8 Schillerpark (park)
- 9 Pankeufer (shore)
- 10 Rehberge (park)



2



5



6



# WEDDING! - QUALITY OF LIFE IN A MULTICULTURAL ENVIRONMENT

Osloer Strasse is characterised by a number of new buildings and above all by its Wilhelminian structure. Where matchstick machines used to rattle in the Osloer Strasse factory, today African dancing or yoga is practiced in the Neighbourhood Floor district centre set up there.

Around Osloer Straße and in its neighborhoods there is a great variety of different worlds of life and culture. Numerous restaurants, cafés, but also snack stalls design the streets like the nearby Badstraße and offer with small shops and the Gesundbrunnen Center a colorful spectrum of culinary delights.

The Schillerpark in the north and the Goethepark in the south are oases in the city. The centrally located Volkspark Rehberge is a special attraction for walkers, joggers and picnics because of its forest character. In summer, the open-air cinema Rehberge invites you here and only a few metres away, the open-air swimming pool Plötzensee almost offers a holiday feeling. In the nearby Humboldthain, the whole family gets their money's worth. Here you will find an outdoor swimming pool, a climbing wall and a viewing platform from which you can look far over the north of Berlin. In the district there are countless football fields, table tennis and playgrounds, which are accessible for everyone.

Wedding is easily accessible on many routes. Two subway lines cross the district and the Gesundbrunnen station connects it with suburban trains and long-distance trains. This is also an ideal prerequisite with regard to Wedding as a business and science location. The Virchow-Klinikum - one of Berlin's largest hospitals - is based here and the next generation of scientists is trained at the renowned Beuth-University of Applied Sciences or at the Robert Koch Institute.



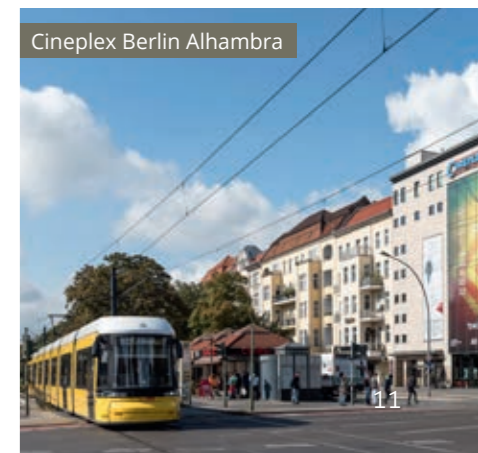
Lake Plötzensee



Subway station Osloer Straße

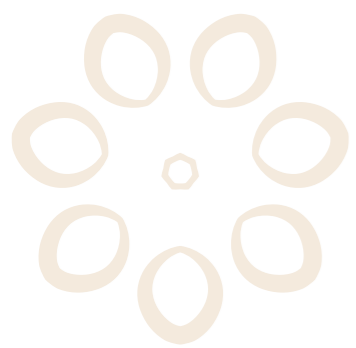


Robert-Koch-Institut



Cineplex Berlin Alhambra





## PLENTY OF ROOM FOR CREATIVITY

---







## OLD BUILDING CHARM IN CENTRAL WEDDING

The apartment building in Osloer Strasse is a classic residential and commercial building in the typical Berlin old building style from 1910. With original stucco elements, wooden stair railings and apartment doors with integrated glass decor, the residential building radiates the typical flair of the turn of the century. Berlin old buildings. In autumn 2018, the façade has been provided with a bright, appealing colour concept and the balconies on the street side and the wooden double box windows have been reworked.

[show apartment](#)





## APARTMENTS WITH A BRIGHT AND OPEN CHARACTER

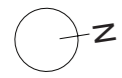
Consisting of a front building and a side wing with a total of three staircases the well-kept building has generously cut 1- to 5-room-apartments of about 43 to 163 square meters. Due to the high ceilings and large windows, the apartments have a light and open character. The original room doors and partially still existing floorboards were preserved and renovated in their original state. The old building character of the apartments is underlined by all the details typical of the construction period. The apartments in the front building are predominantly equipped with balconies and some with bay windows, which allow plenty of light through the large window areas.

The small inner courtyard with bicycle storage facilities leads to the equally tasteful staircase of the side wing. It is also possible to extend the attic by a further 344 square metres.

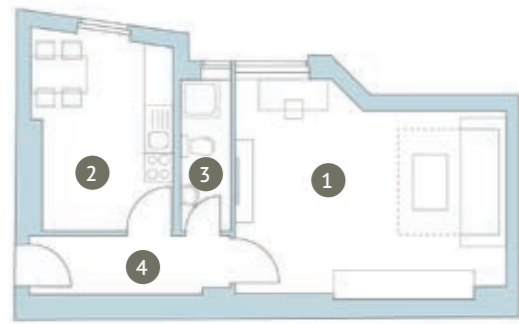




# FLOOR PLANS EXAMPLES



1-room apartment  
43.68 sqm, 4th floor, apartment 23



no.	room	size in sqm
1	living room	23.67
2	kitchen	11.59
3	bathroom	3.31
4	corridor	5.11

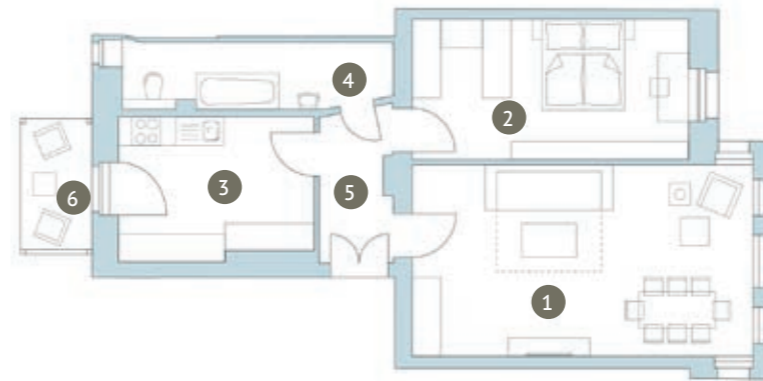
show apartment



show apartment



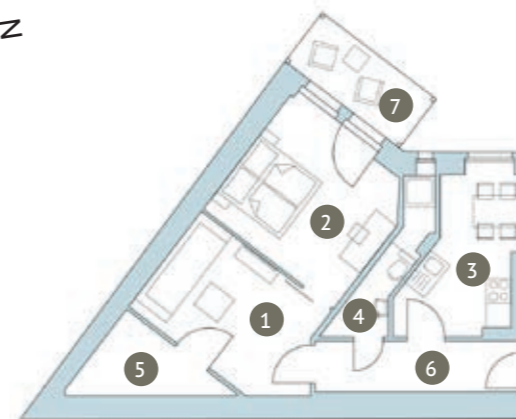
2-room apartment  
73.28 sqm, 2nd floor, apartment 3



no.	room	size in sqm
1	living room	28.83
2	bedroom	17.34
3	kitchen	12.46
4	bathroom	7.78
5	corridor	4.82
6	balcony (50%)	2.05



2-room apartment  
53.26 sqm, 1st floor, apartment 19



no.	room	size in sqm
1	living room	12.36
2	bedroom	14.19
3	kitchen	9.49
4	bathroom	3.76
5	storage room	4.61
6	corridor	6.25
7	balcony (50%)	2.60

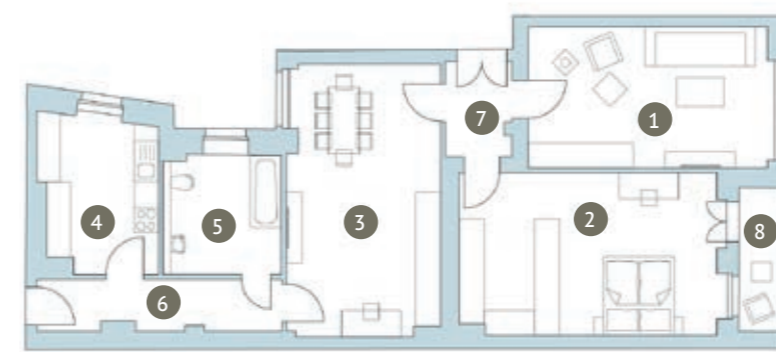
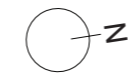




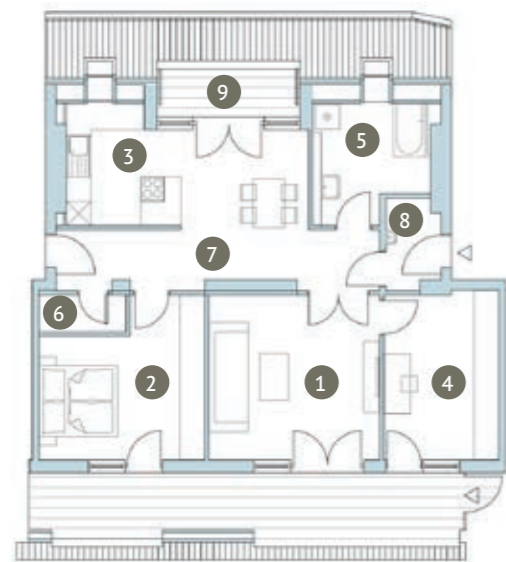
[show apartment](#)

## 3-room apartment

102.22 sqm, 2nd floor, apartment 4



no.	room	size in sqm
1	living room	20.52
2	bedroom	25.38
3	dining room	24.56
4	kitchen	10.61
5	bathroom	8.35
6	corridor 1	7.26
7	corridor 2	3.73
8	balcony (50%)	1.81



## 3-room apartment

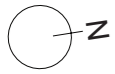
81.49 m<sup>2</sup>, attic, apartment 29

no.	room	size in sqm
1	living room	16.76
2	bedroom	14.03
3	kitchen	14.93
4	Arbeitszimmer	11.44
5	bathroom	6.59
6	storage room	1.92
7	corridor	10.99
8	lavatory	2.80
9	terrace (50%)	2.03



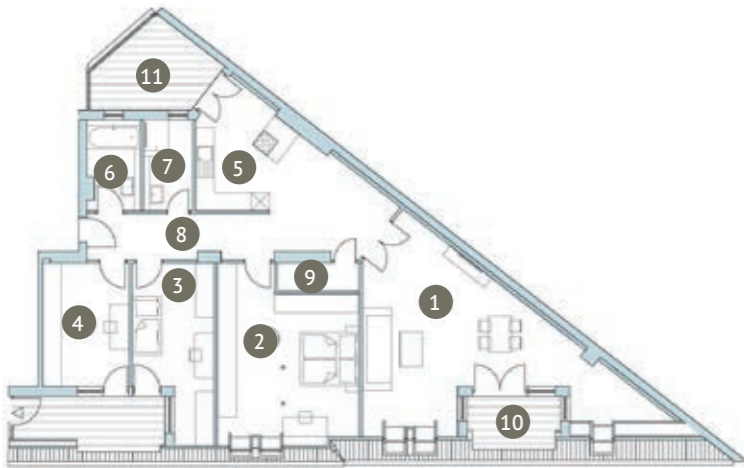
[show apartment](#)



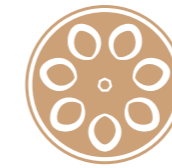


## 4-room apartment

127.96 sqm, attic, apartment 30



no.	room	size in sqm
1	living room	33.26
2	bedroom	21.35
3	children's room	12.59
4	office	11.32
5	kitchen	12.67
6	bathroom 1	4.75
7	bathroom 2	5.20
8	corridor	17.51
9	storage room	2.39
10	terrace 1 (50%)	4.65
11	terrace 2 (50%)	2.27



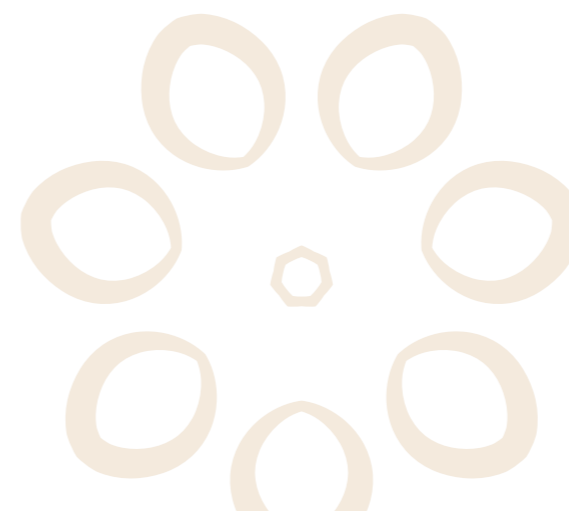
OSLOER



**Photo credits:**

page 4-5, 12-13 und page 15: Shutterstock  
 page 10-11 from Dreizung - own work,  
 CC BY-SA 3.0, <https://commons.wikimedia.org/w/index.php?curid=26526840>

**Disclaimer:** The statements in this brochure only serve as information. For accuracy and integrity we don't assume liability. Subject to change are without notice. This brochure is not a contractual offer. Images and representations are exemplary and not-binding.  
 July 2019





# ACCENTRO

## ACCENTRO GmbH

Uhlandstraße 165  
10719 Berlin  
phone. +49 (0)30 887 181 7586  
fax +49 (0)30 887 181 49  
[www.accentro.co.uk](http://www.accentro.co.uk)  
[mail@accentro.de](mailto:mail@accentro.de)