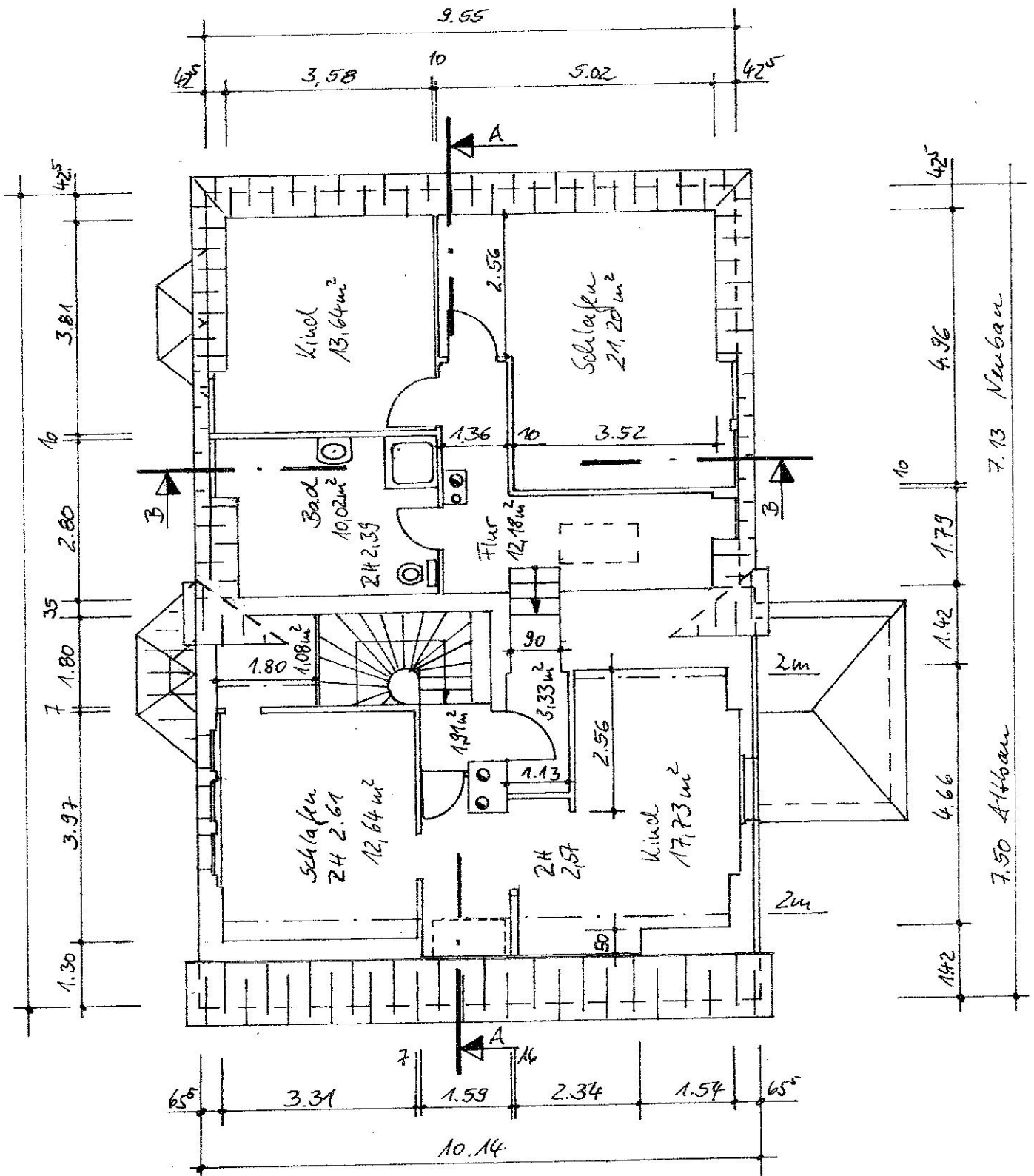


Wohnfläche:  
 Altbau: 52,07 m<sup>2</sup>  
 Neubau: 56,57 m<sup>2</sup>  


---

 108,64 m<sup>2</sup>

Erdgeschoss M 1:100  
 14/12/09 *Andreas*



Wohnfläche

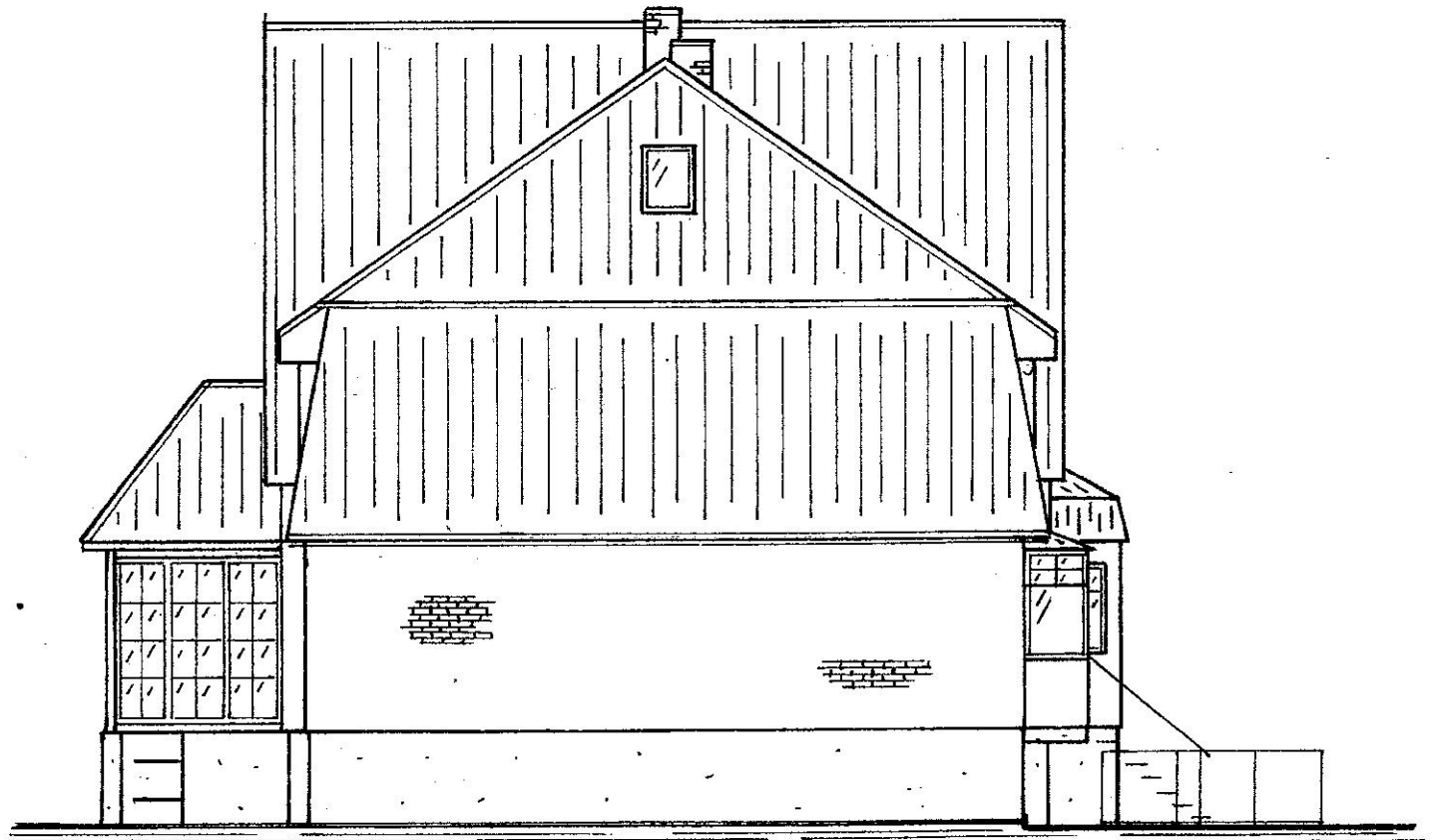
Altbau : 36,69 m<sup>2</sup>  
 Neubau : 57,04 m<sup>2</sup>

93,73 m<sup>2</sup>

Dachgeschoss M 1:100  
 14.12.09 Geddes



Nord

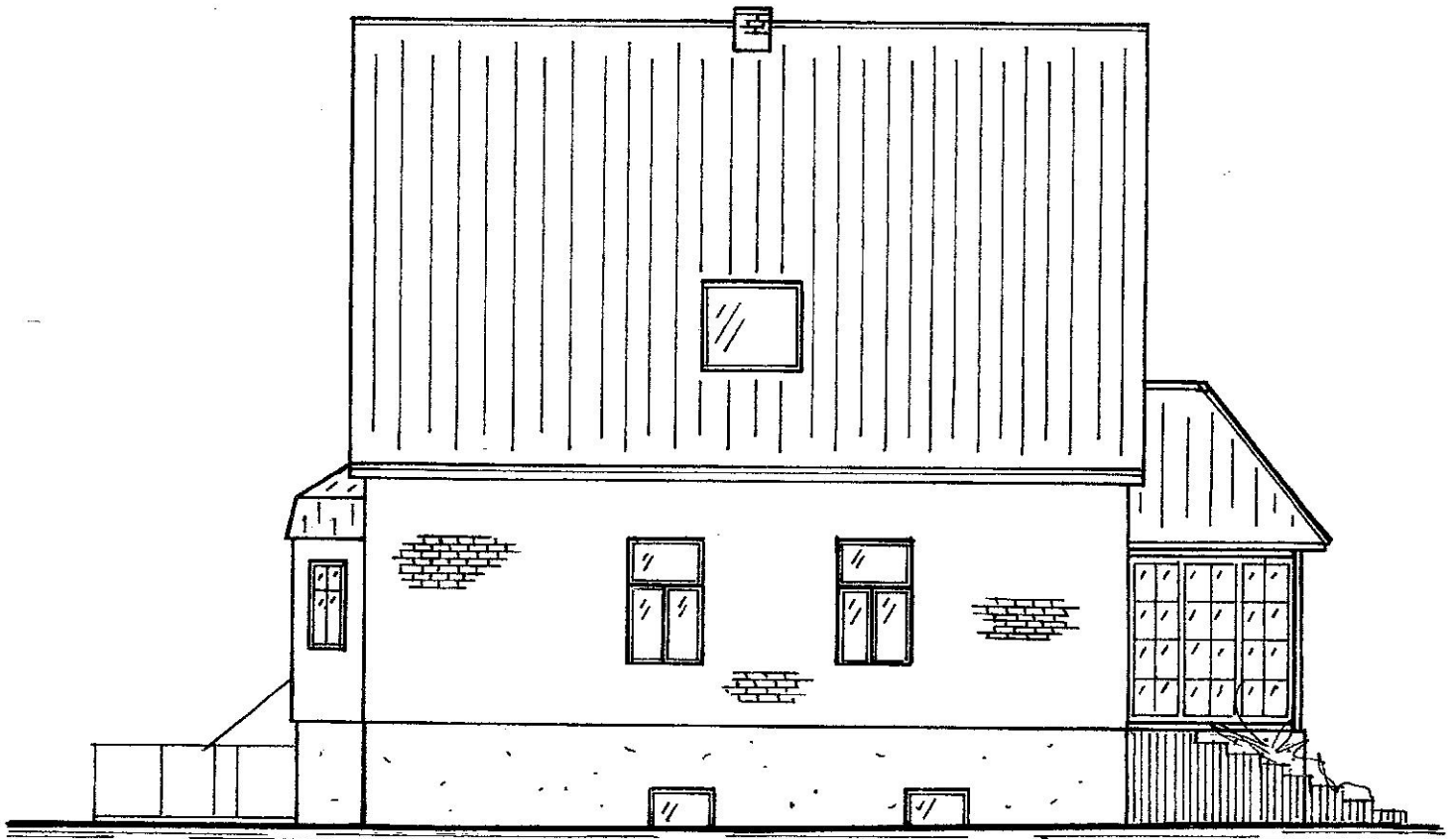


Ost

Ansichten 1:100  
14112109 Sedes



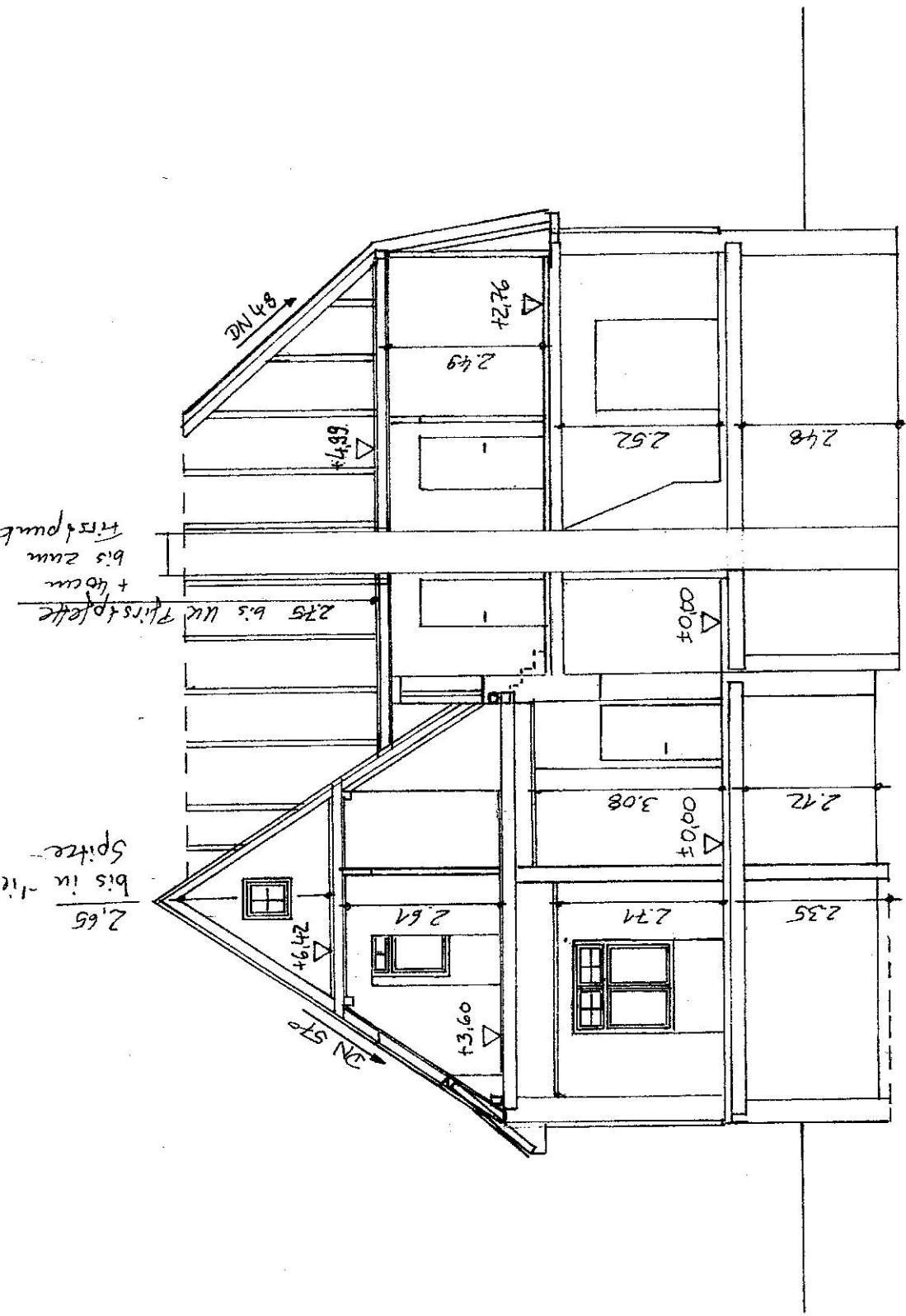
Süd

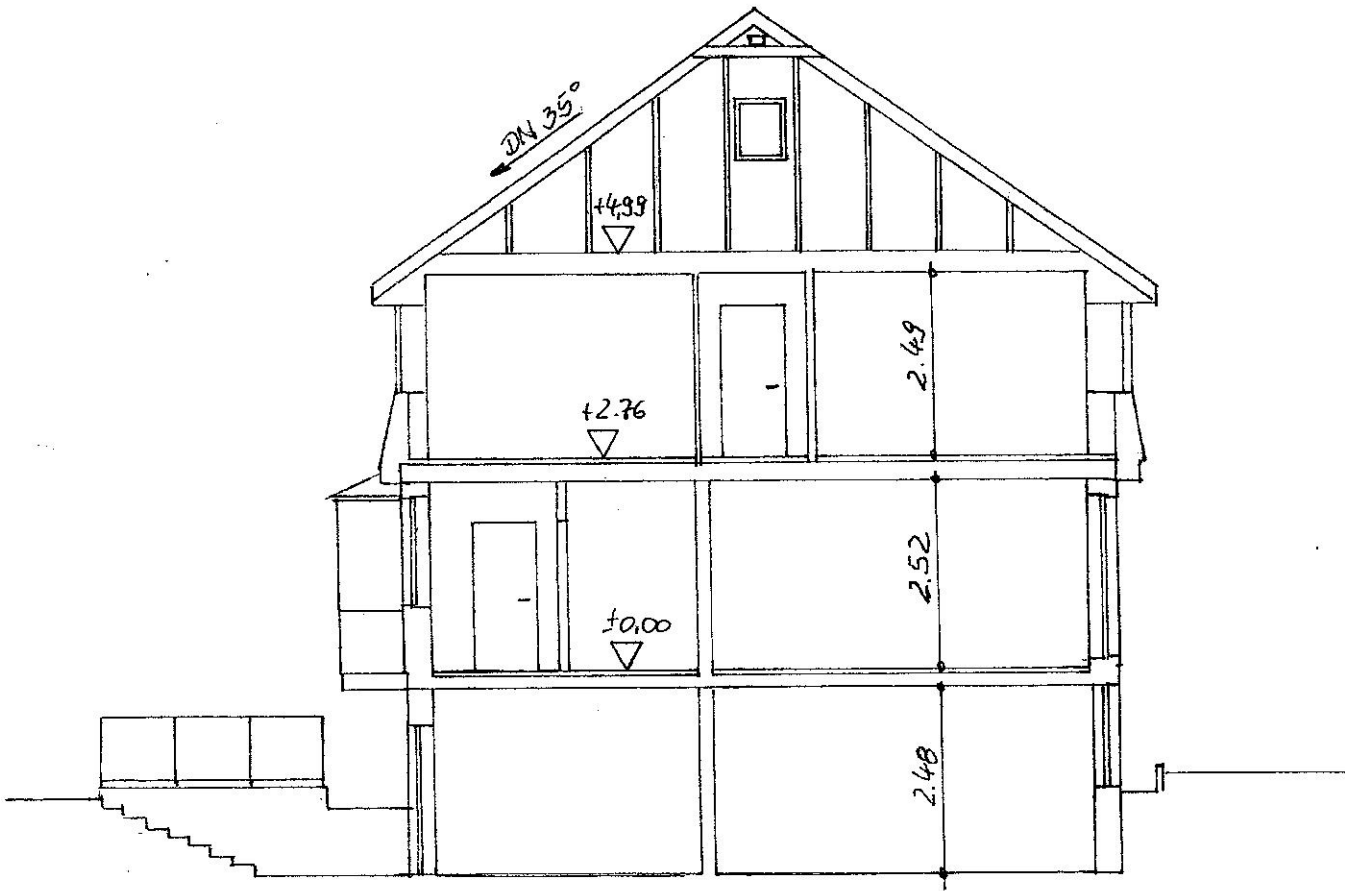


West

Ausichten M 1:100  
14/12/09 Seckert

Schnitt A-A, M 1:100  
 14/12/09  
 Geddes





Schnitt B-B  
14112109 M 1:10  
Fiedler