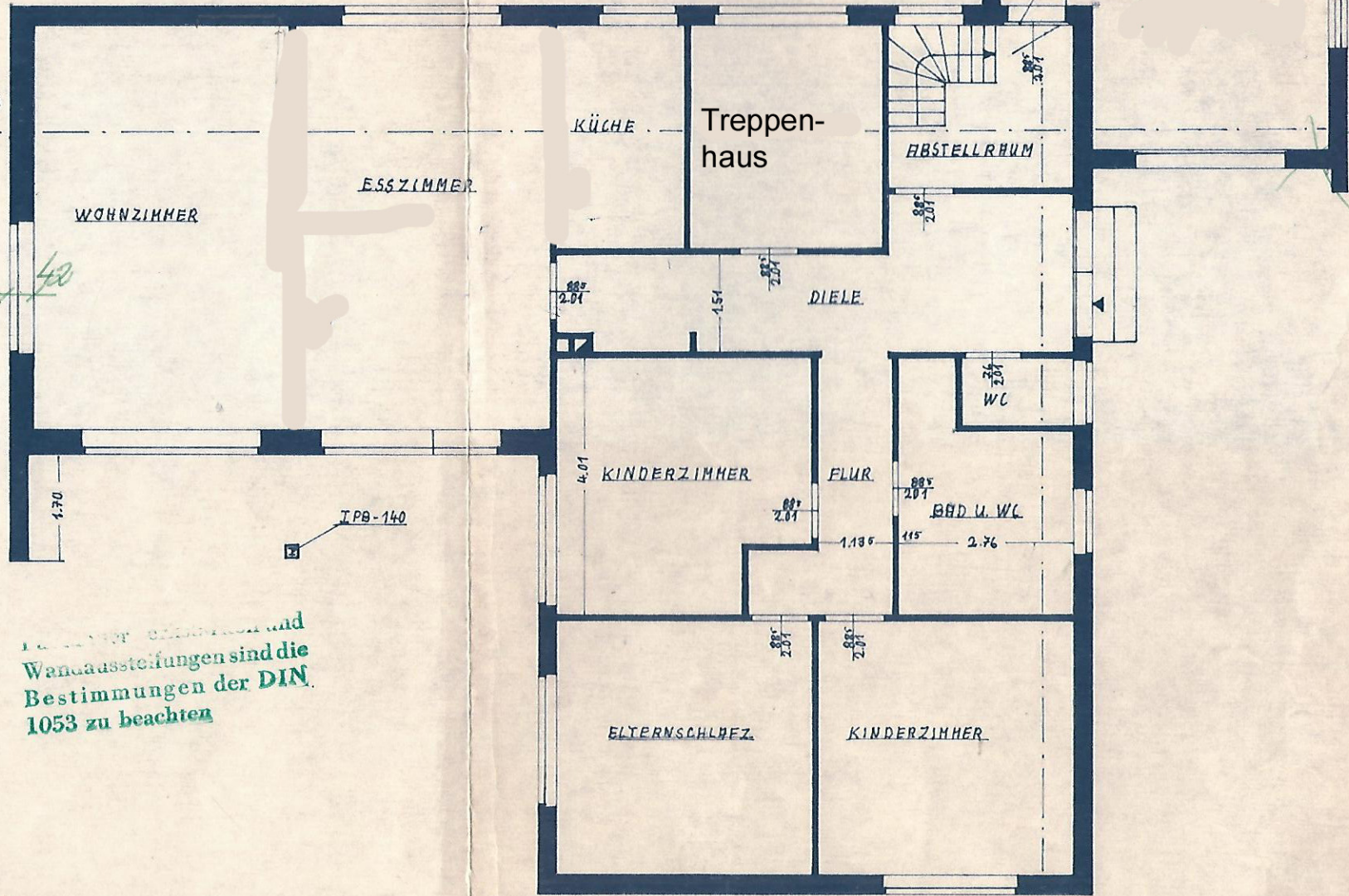


Hand-drawn floor plan with dimensions and room labels.

Vertical dimensions on the left side:
3.00, 2.6975, 5.0125, 3.365, 6.99, 6.26, 2.01, 1.615, 1.70, 1.49, 4.01, 2.01, 1.115, 2.01, 7.00

Vertical dimensions on the right side:
2.055, 1.51, 2.0525, 1.09, 2.09, 1.01, 0.55, 1.01, 2.51, 2.6975, 2.055, 2.51, 2.51, 1.135, 2.76, 13.99, 4.01, 3.00, 2.6975, 3.00



Horizontal dimensions at the bottom:
8.125, 2.76, 9.9, 1.76, 1.115, 7.5, 5.49, 2.01, 1.24, 6.825, 2.385, 6.825, 4.01, 4.01, 1.15, 4.01, 2.01, 2.135, 3.6975, 3.00

Wandausstattungen sind die Bestimmungen der DIN 1053 zu beachten