

21

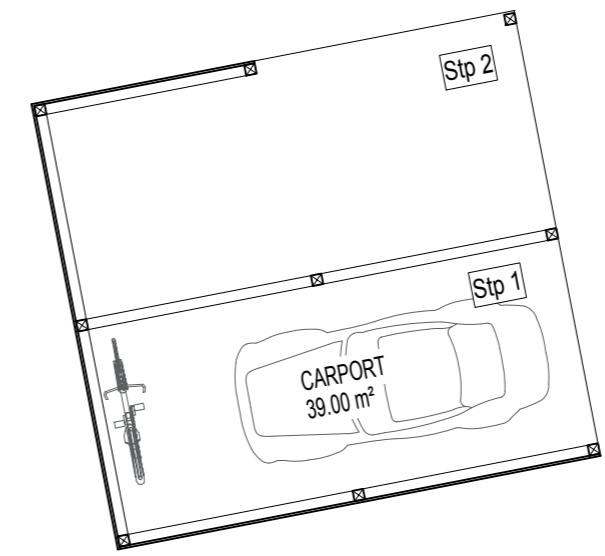
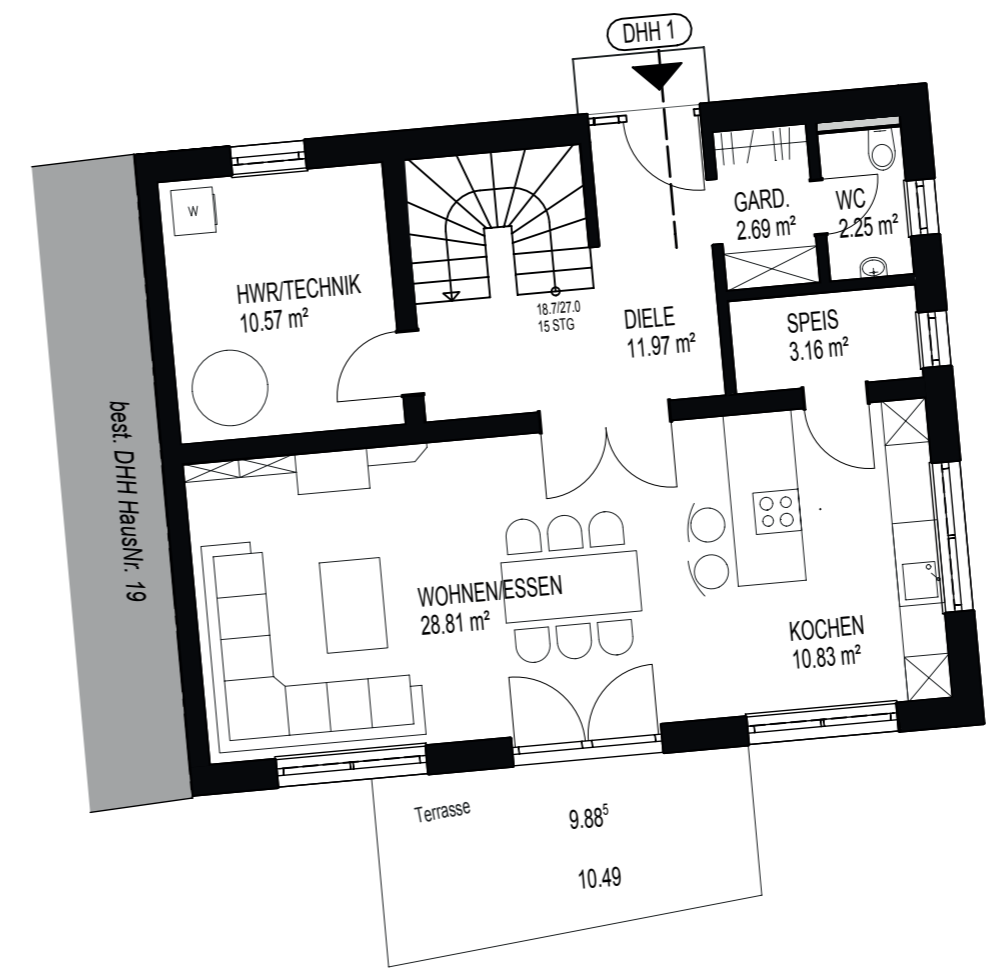
Martin-Greif-Straße

84539 Ampfing

Doppelhaushälfte
Erdgeschoss



MARTIN - GREIF - STRASSE



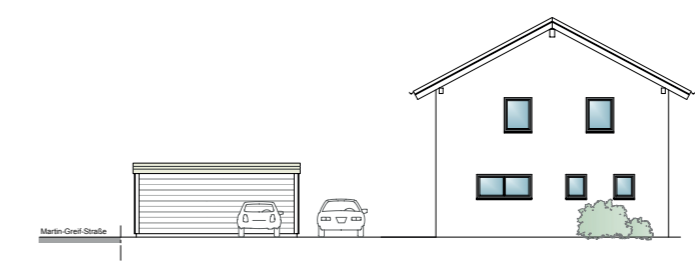
	WFL qm
HWR/ Technik	10,57
Diele	11,97
Gard.	2,69
WC	2,25
Speis.	3,16
Wo. / Ko. / Es.	39,64
Gesamt	70,28



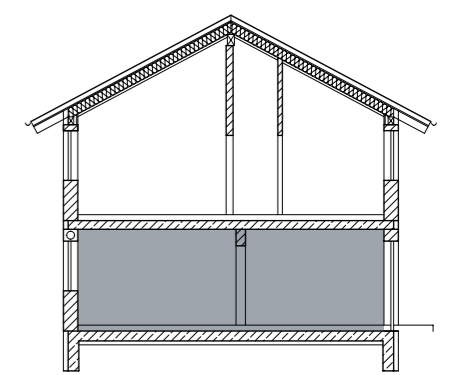
Nordansicht



Südansicht



Ostansicht

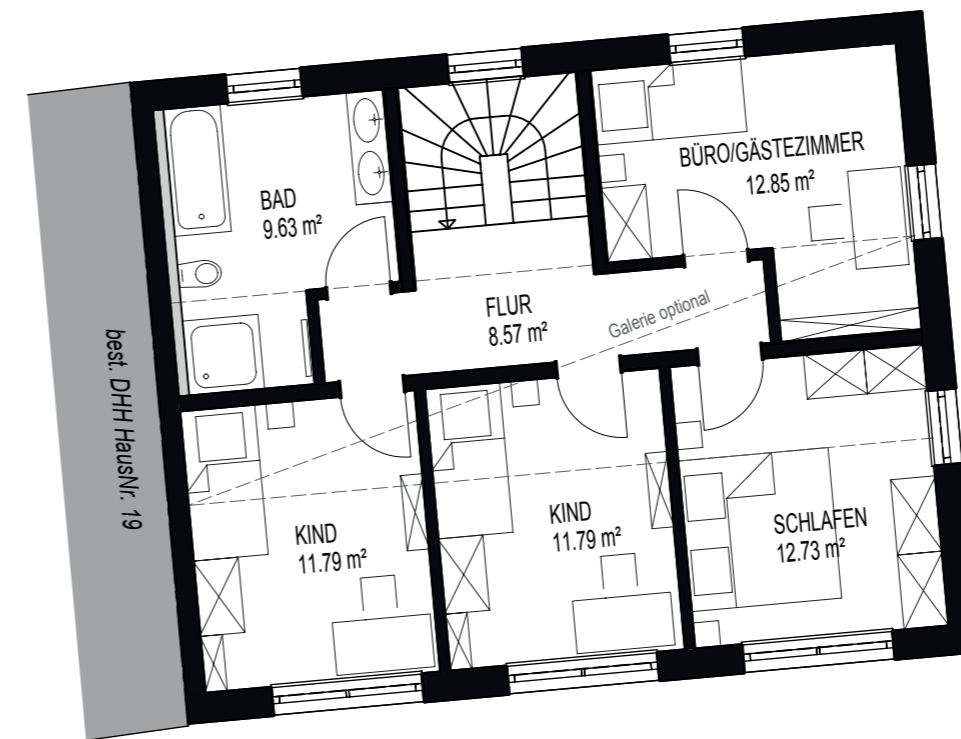


21

Martin-Greif-Straße

84539 Ampfing

Doppelhaushälfte
Dachgeschoss



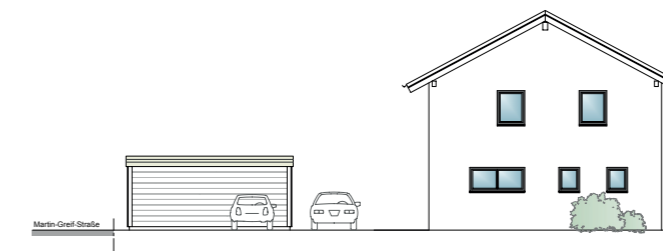
	WFL qm
Bad	9,63
Kind	11,79
Flur	8,57
Kind	11,79
Büro/ Gästezimmer	12,85
Schlafen	12,73
Gesamt	49,81



Nordansicht



Südansicht



Ostansicht

