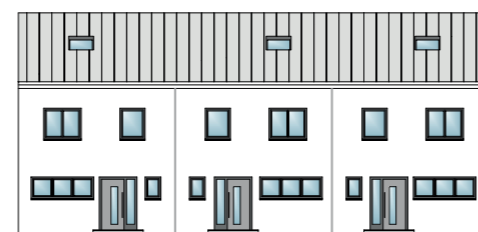
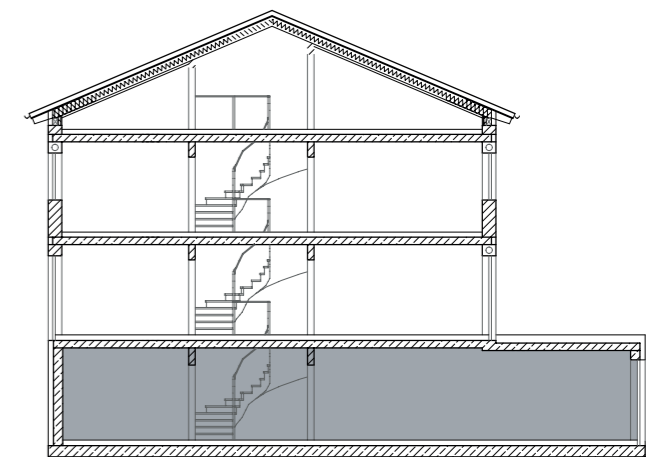
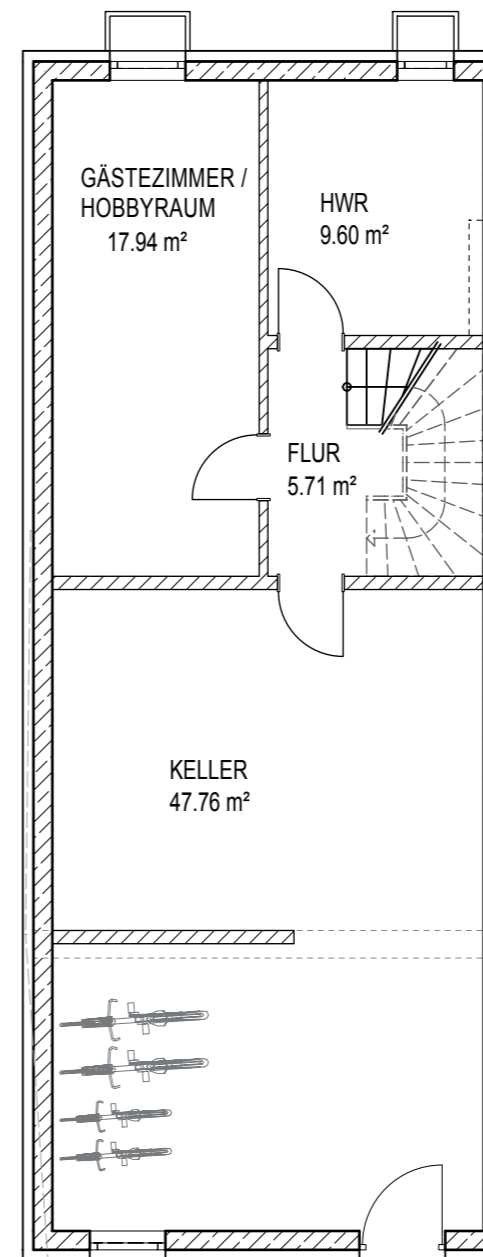


Zeilhofener Straße

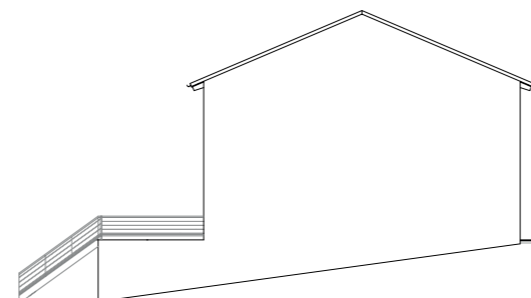
84405 Dorfen

3-Spänner links
Kellergeschoss

	WFL qm
Gästezimmer/ Hobbyraum	17,94
Keller	47,76
Flur	5,71
HWR	9,60
Gesamt	81,01



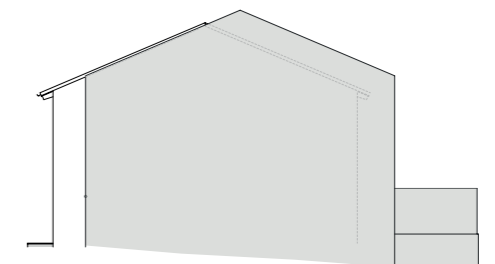
Nordansicht



Ostansicht



Südansicht



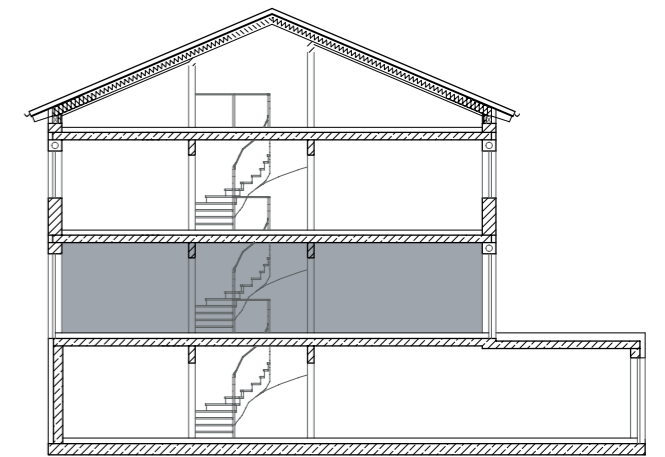
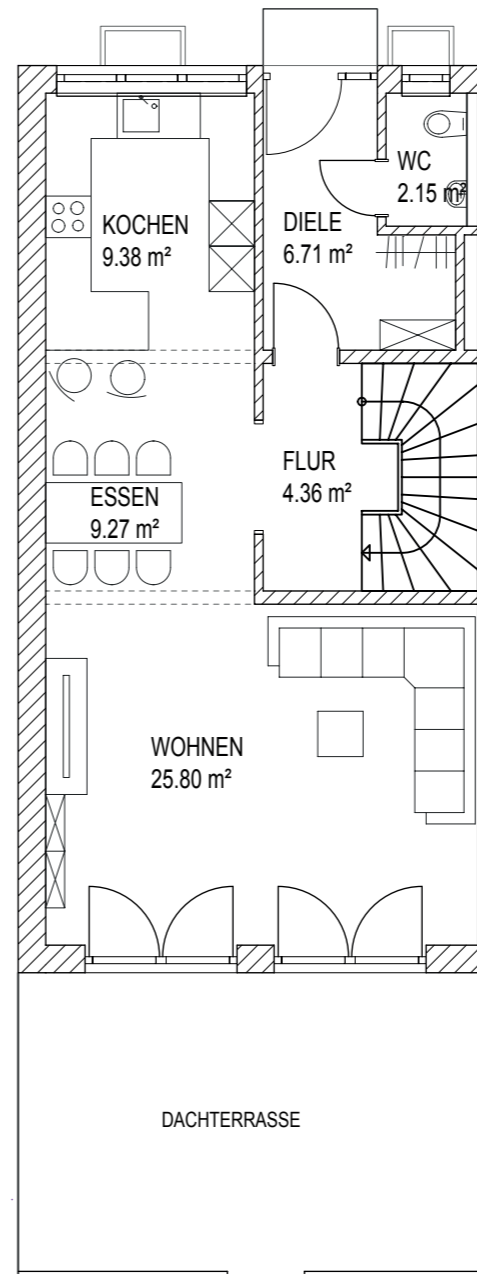
Westansicht

Zeilhofener Straße

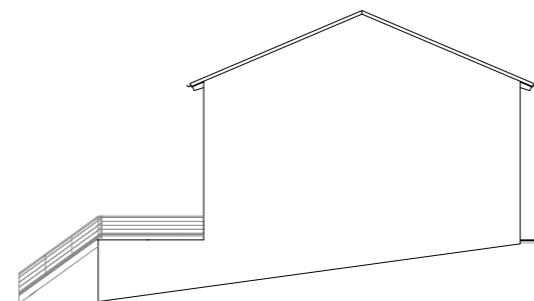
84405 Dorfen

3-Spänner links Erdgeschoss

	WFL qm
Wo. / Ko. / Es.	44,45
Diele	6,71
WC	2,15
Flur	4,36
Gesamt	57,67



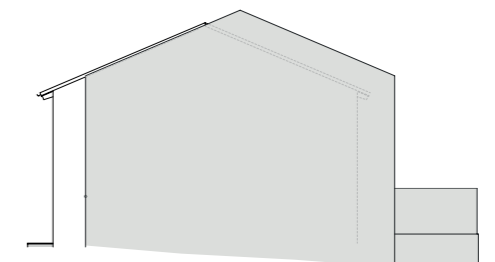
Nordansicht



Ostansicht



Südansicht



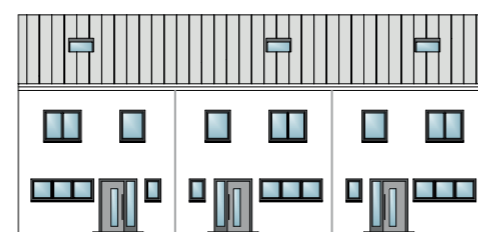
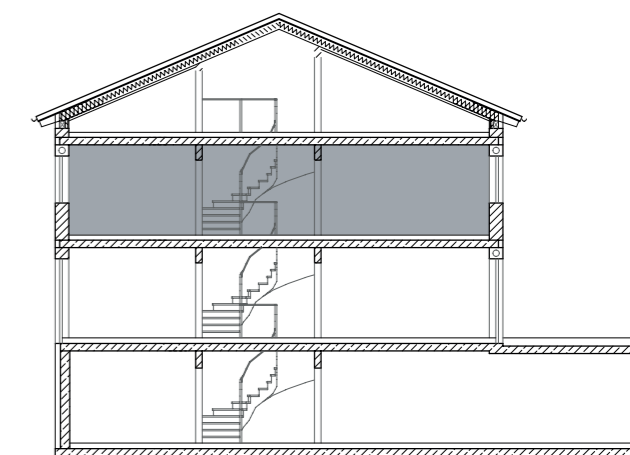
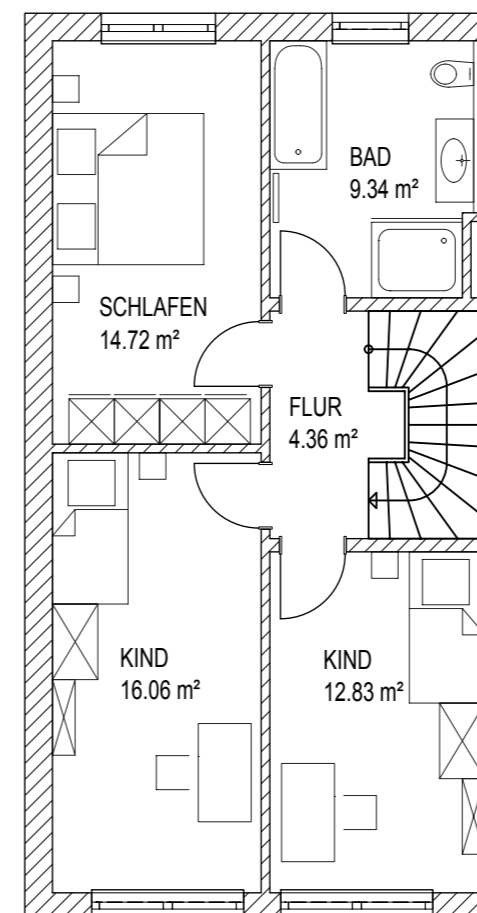
Westansicht

Zeilhofener Straße

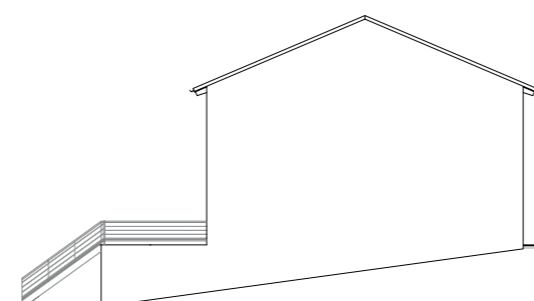
84405 Dorfen

3-Spänner links Obergeschoss

	WFL qm
Schlafen	14,72
Bad	9,34
Flur	4,36
Kind	16,06
Kind	12,83
Gesamt	57,31



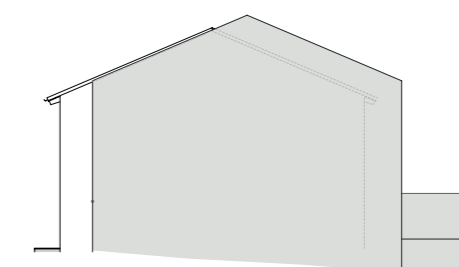
Nordansicht



Ostansicht



Südansicht

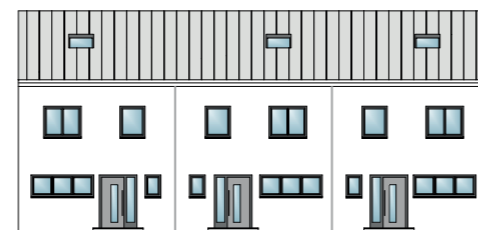
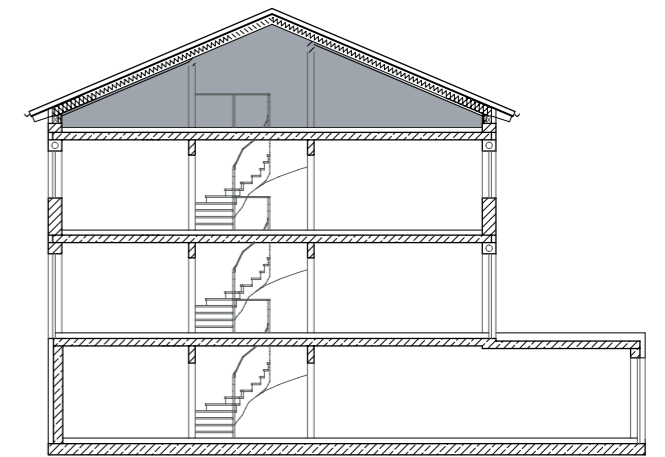
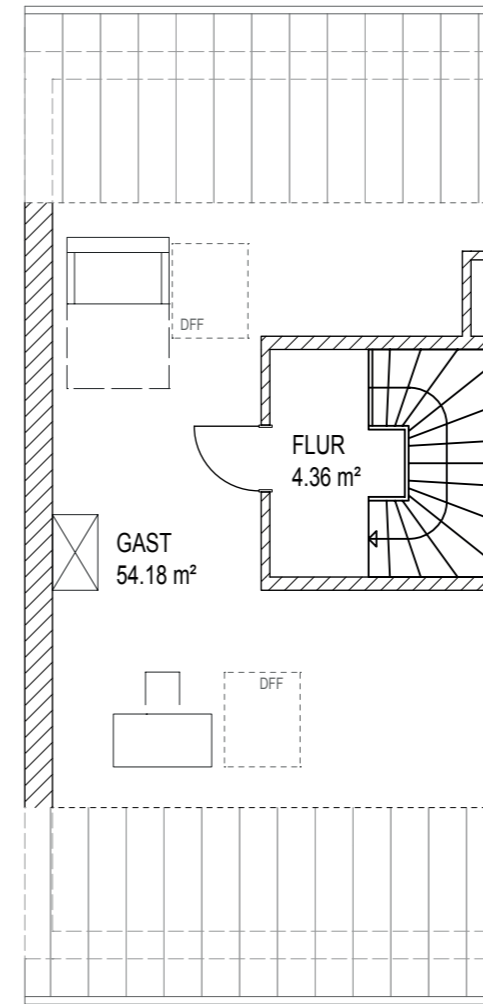


Westansicht

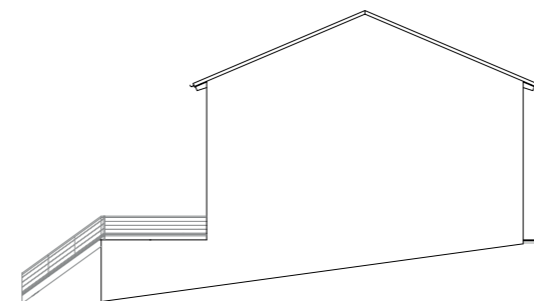
Zeilhofener Straße

84405 Dorfen

3-Spänner links
Dachgeschoss



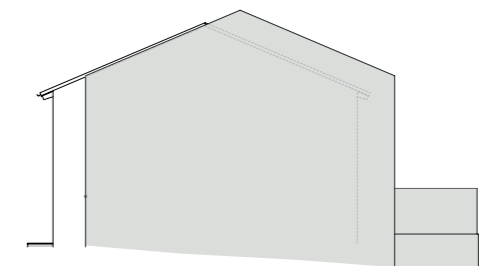
Nordansicht



Ostansicht



Südansicht



Westansicht

WFL qm

Gast 54,18

Flur 4,36

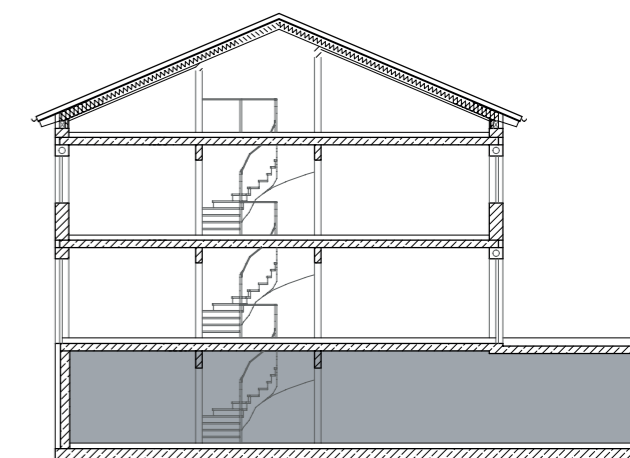
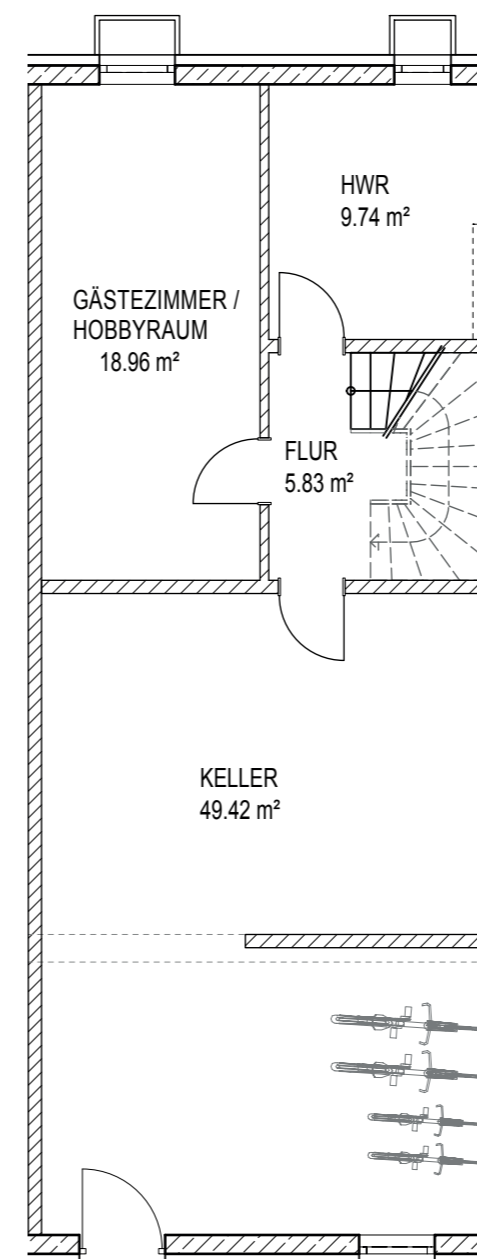
Gesamt 58,54

Zeilhofener Straße

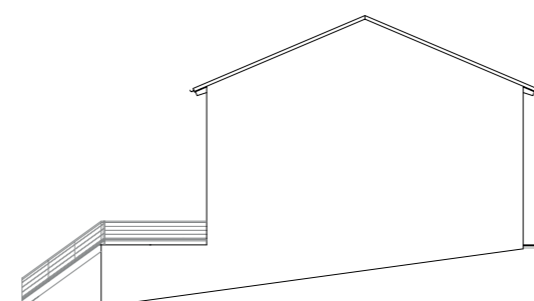
84405 Dorfen

3-Spänner mitte
Kellergeschoss

	WFL qm
Gästezimmer/ Hobbyraum	18,96
Keller	49,42
Flur	5,83
HWR	9,74
Gesamt	83,95



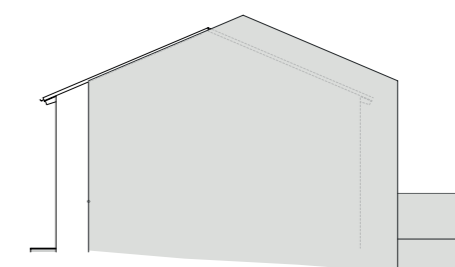
Nordansicht



Ostansicht



Südansicht



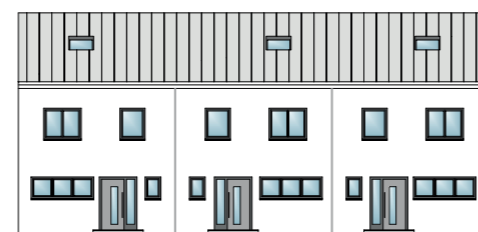
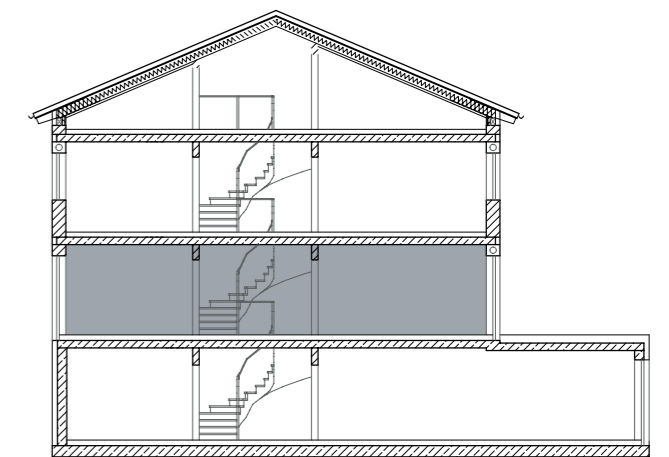
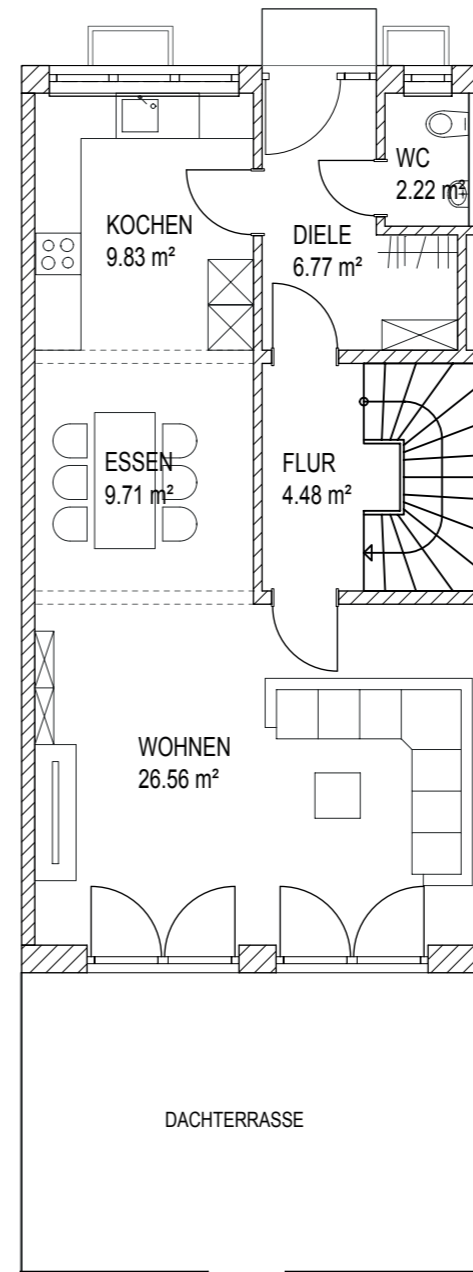
Westansicht

Zeilhofener Straße

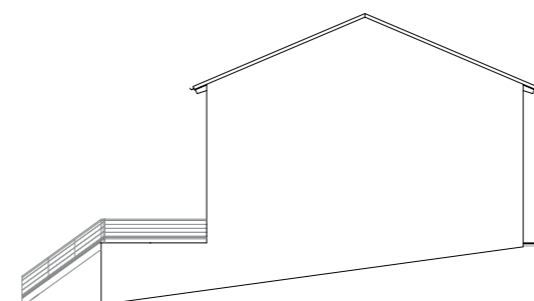
84405 Dorfen

3-Spänner mitte
Erdgeschoss

	WFL qm
Wo. / Ko. / Es.	46,01
Diele	6,77
WC	2,22
Flur	4,48
Gesamt	59,57



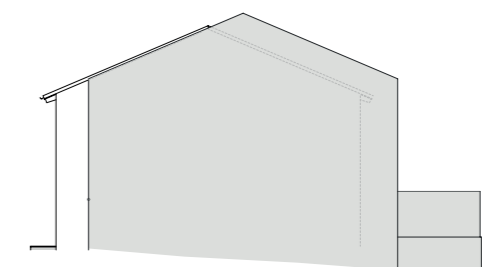
Nordansicht



Ostansicht



Südansicht



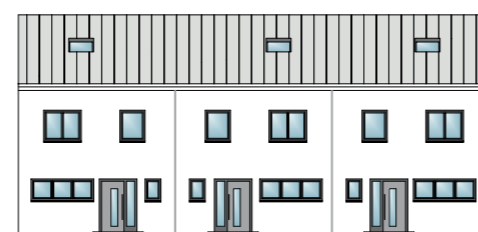
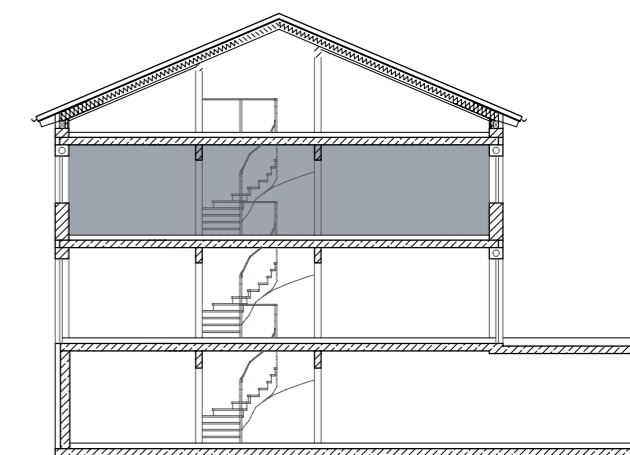
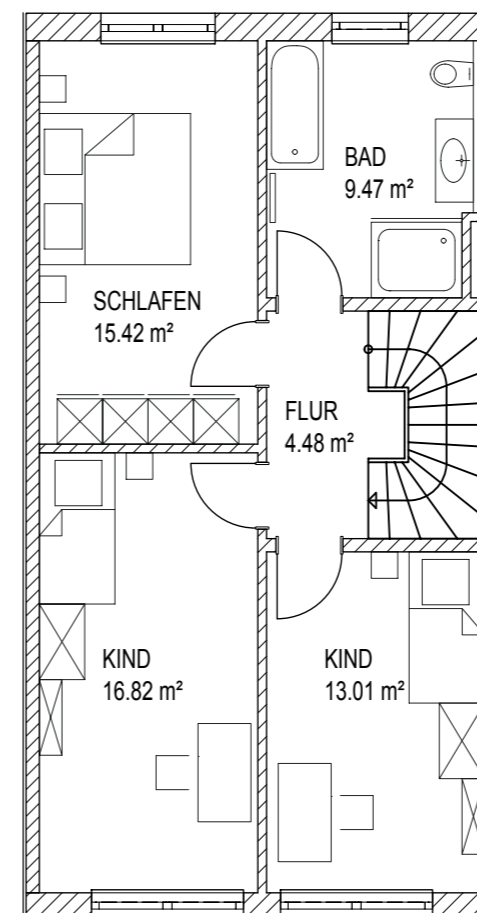
Westansicht

Zeilhofener Straße

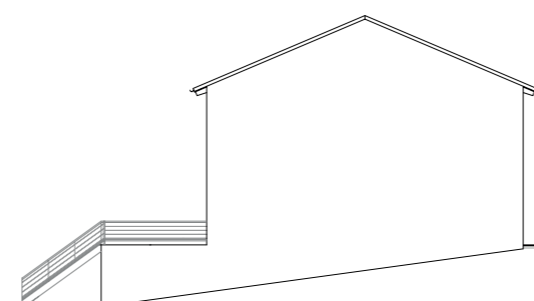
84405 Dorfen

3-Spänner mitte Obergeschoss

	WFL qm
Schlafen	15,42
Bad	9,47
Flur	4,48
Kind	16,82
Kind	13,01
Gesamt	59,02



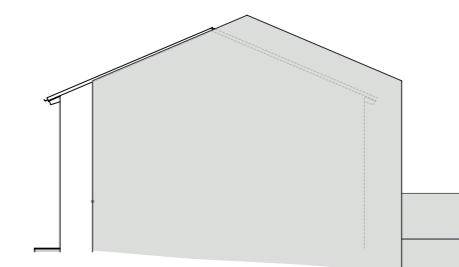
Nordansicht



Ostansicht



Südansicht

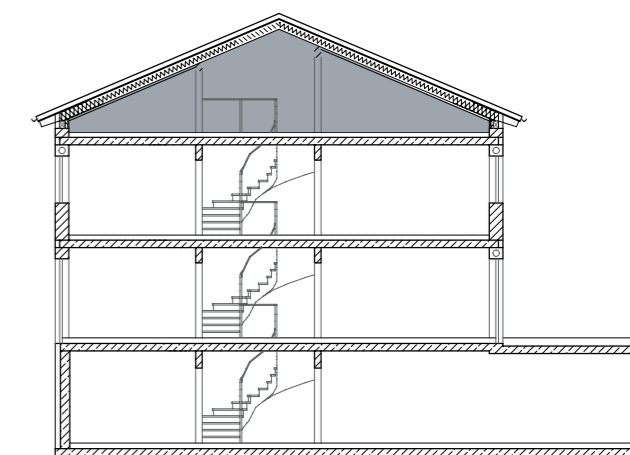
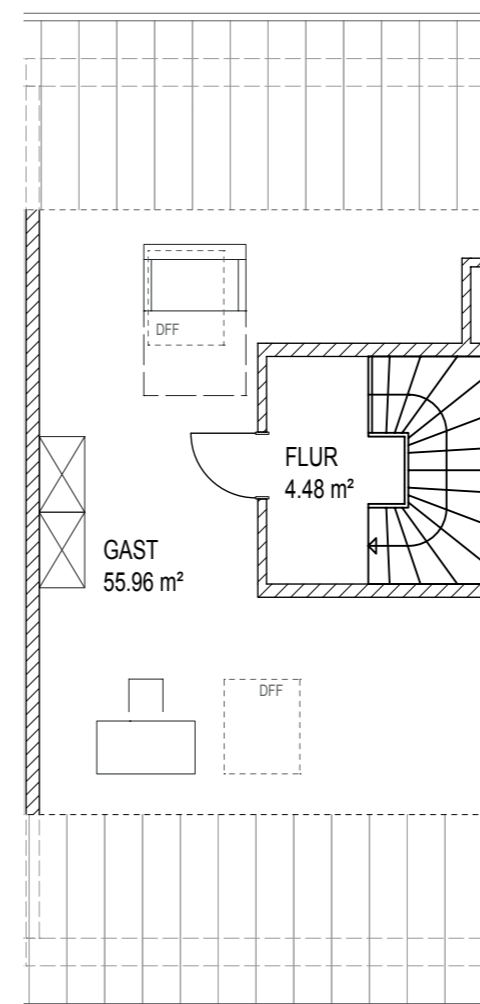


Westansicht

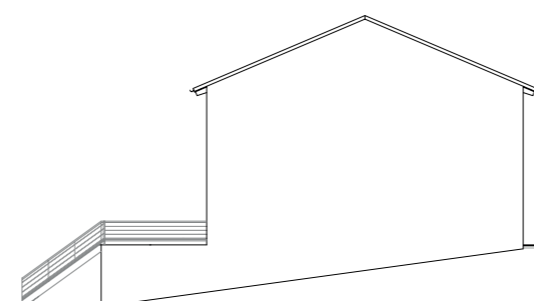
Zeilhofener Straße

84405 Dorfen

3-Spänner mitte
Dachgeschoss



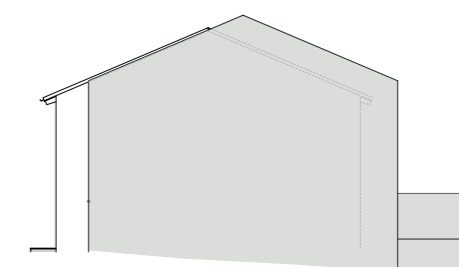
Nordansicht



Ostansicht



Südansicht



Westansicht

WFL qm

Gast 55,96

Flur 4,48

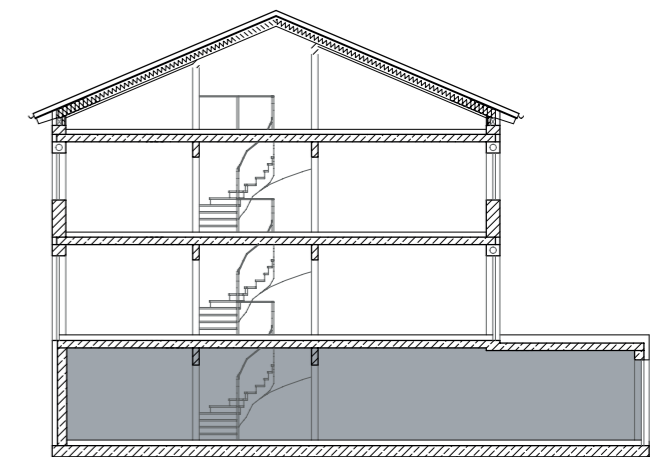
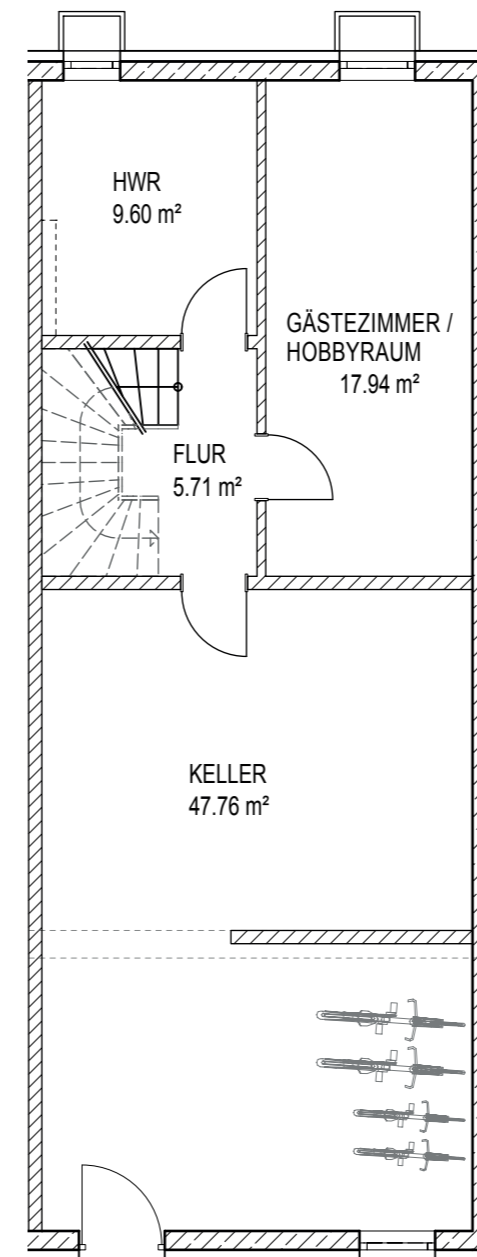
Gesamt 60,44

Zeilhofener Straße

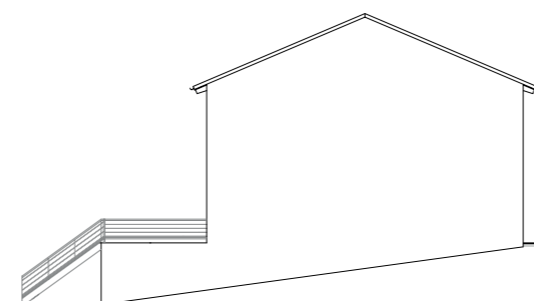
84405 Dorfen

3-Spänner rechts
Kellergeschoss

	WFL qm
Gästezimmer/ Hobbyraum	17,94
Keller	47,76
Flur	5,71
HWR	9,74
Gesamt	81,15



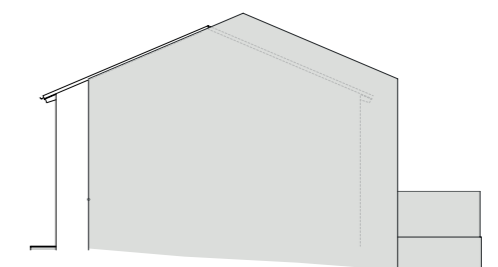
Nordansicht



Ostansicht



Südansicht



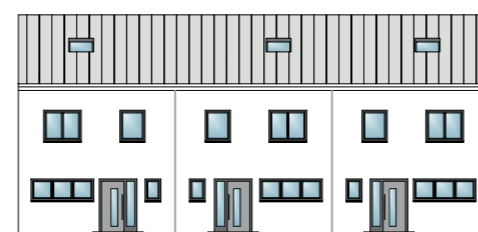
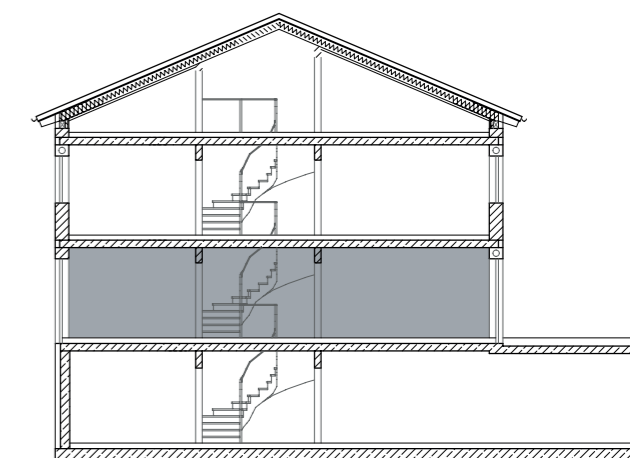
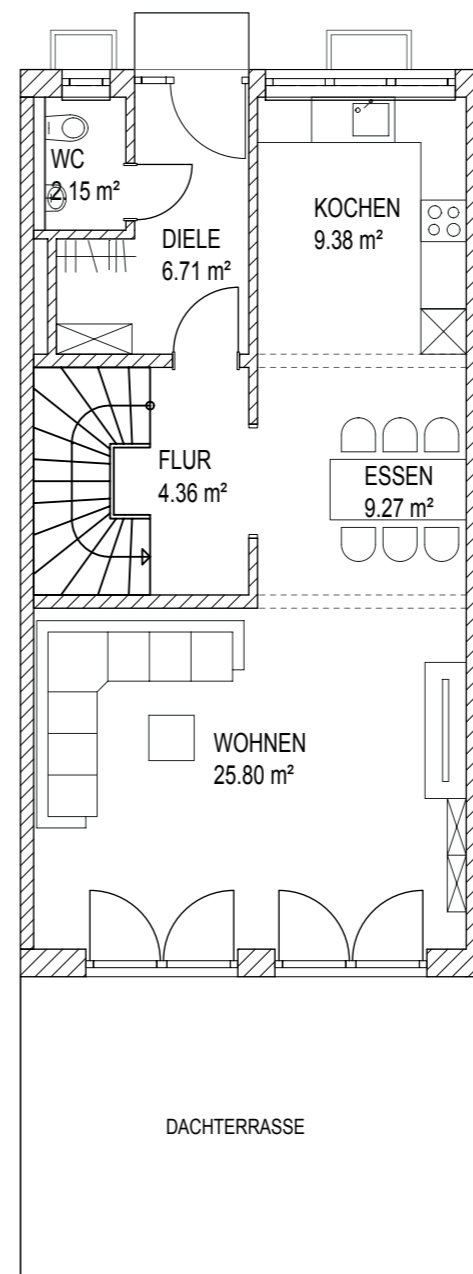
Westansicht

Zeilhofener Straße

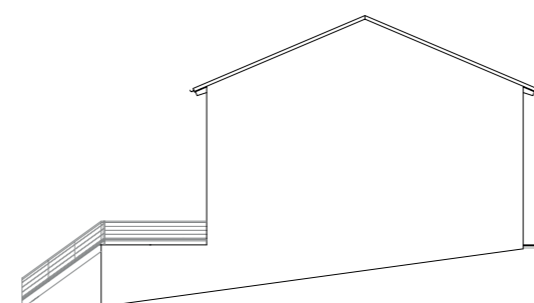
84405 Dorfen

3-Spänner rechts Erdgeschoss

	WFL qm
Wo. / Ko. / Es.	44,45
Diele	6,71
WC	2,15
Flur	4,36
Gesamt	57,67



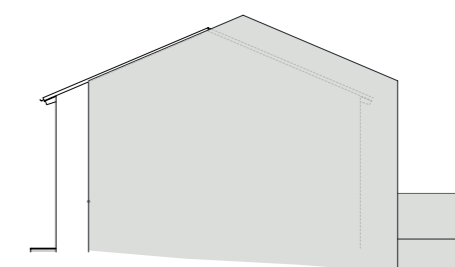
Nordansicht



Ostansicht



Südansicht



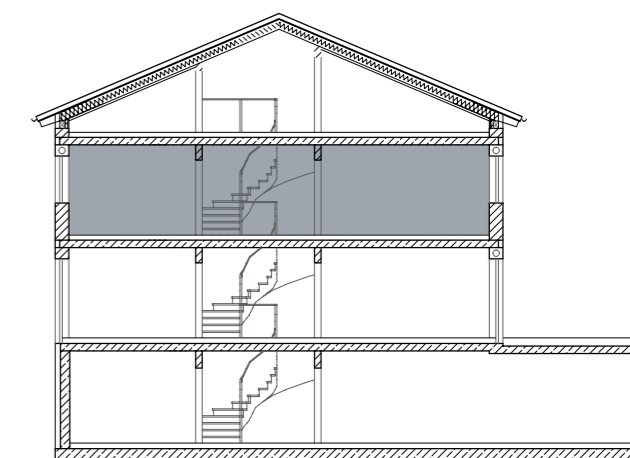
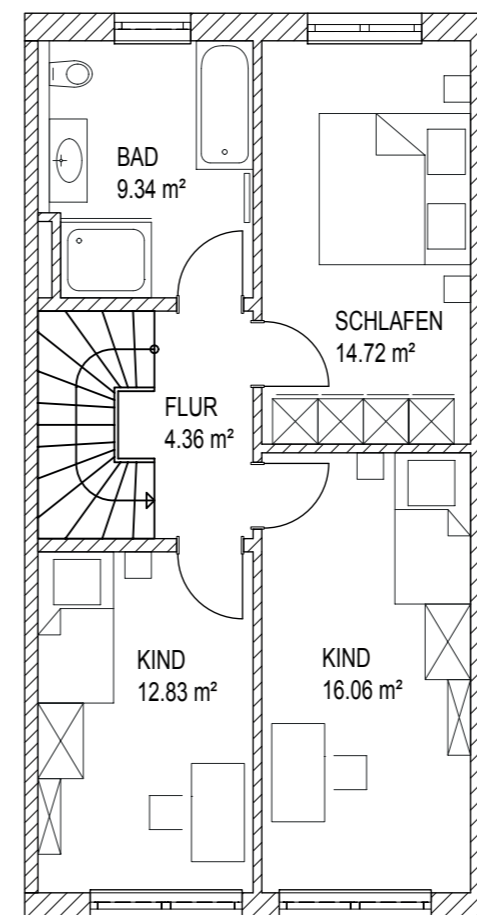
Westansicht

Zeilhofener Straße

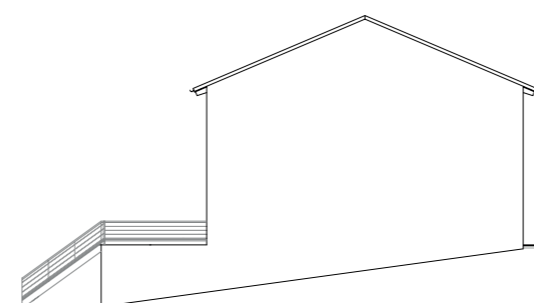
84405 Dorfen

3-Spänner rechts Obergeschoss

	WFL qm
Schlafen	14,72
Bad	9,34
Flur	4,36
Kind	12,83
Kind	16,06
Gesamt	57,31



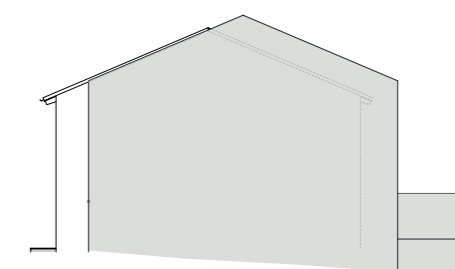
Nordansicht



Ostansicht



Südansicht

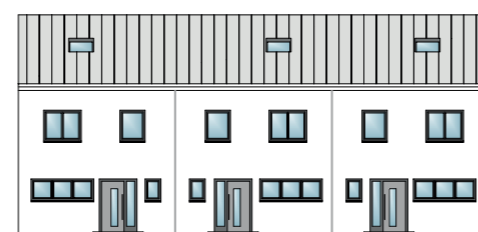
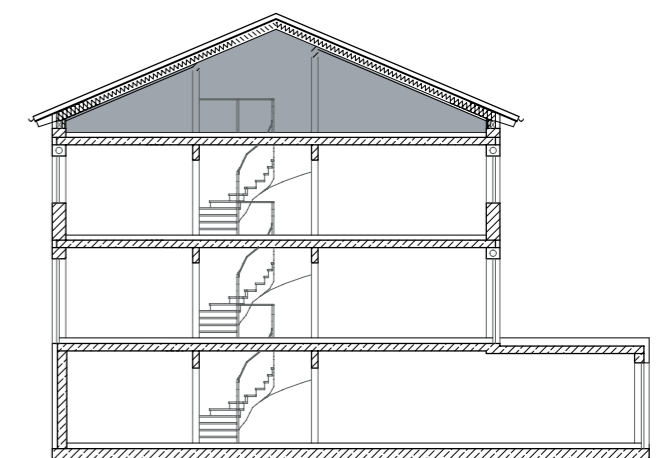
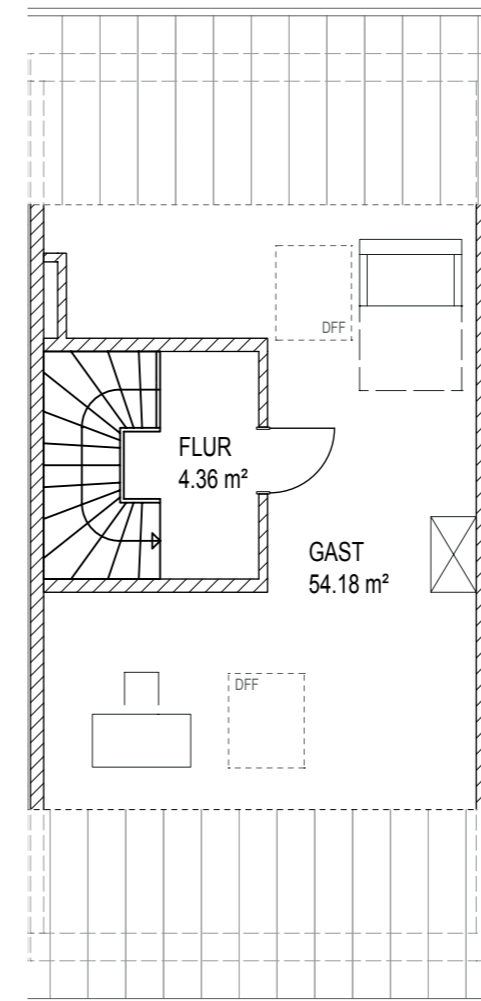


Westansicht

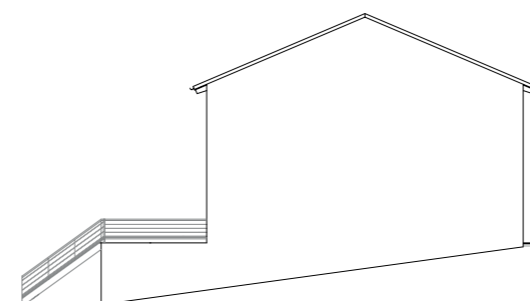
Zeilhofener Straße

84405 Dorfen

3-Spänner rechts
Dachgeschoss



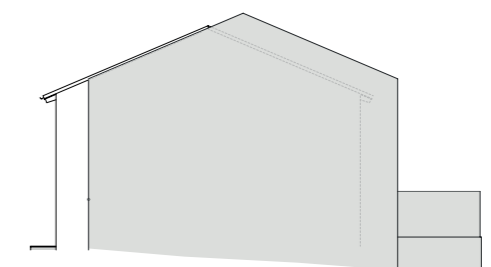
Nordansicht



Ostansicht



Südansicht



Westansicht

WFL qm

Gast	54,18
Flur	4,48
Gesamt	58,66