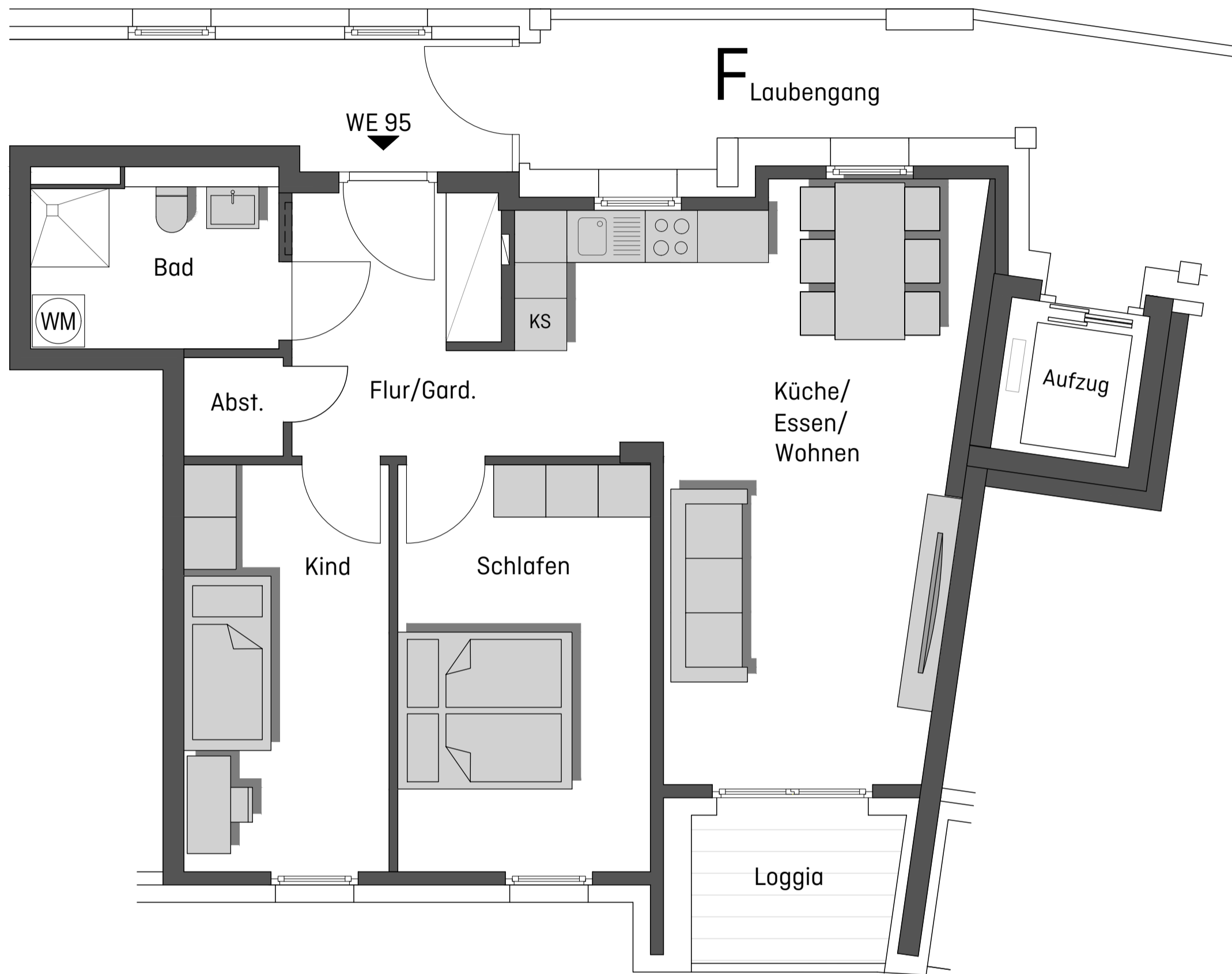


# WOHNSTOLZ

## AUGSBURG OBERHAUSEN

Reutlinger Straße 38 und 38a

Neubau 2 MFH (E+F) + TG



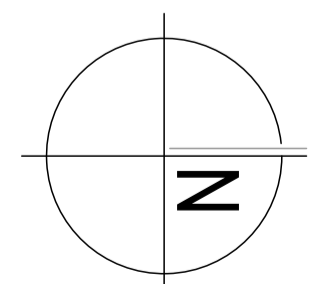
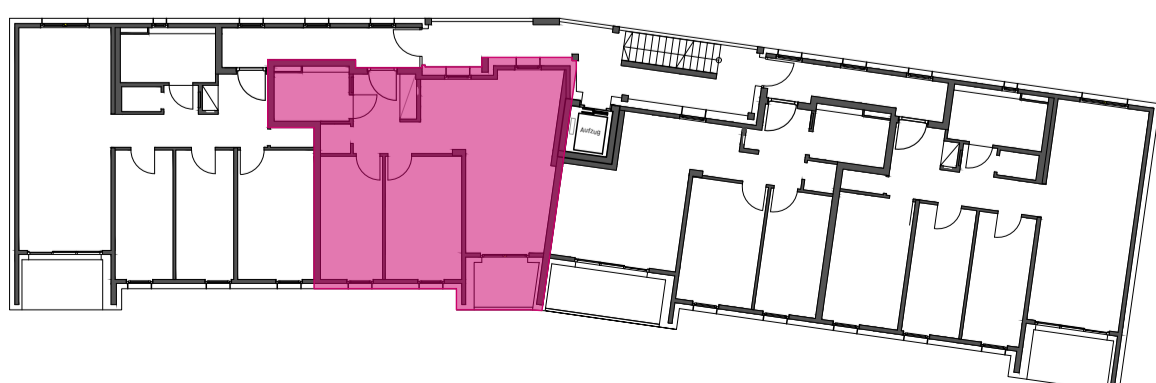
### GRUNDRISS

WE 95

3.Obergeschoss

3 Zi.-Whg.

Flur/ Gard.	7,37 m <sup>2</sup>
Bad	5,59 m <sup>2</sup>
Abst.	1,29 m <sup>2</sup>
Kind	11,00 m <sup>2</sup>
Schlafen	13,54 m <sup>2</sup>
Wohnen/Essen/Küche	27,59 m <sup>2</sup>
Terrasse 25%	0,99 m <sup>2</sup>
<b>ges. Wohnfläche</b>	<b>67,37 m<sup>2</sup></b>



M. 1:100 - A4

0 0,5 1,0 2,5 5,0