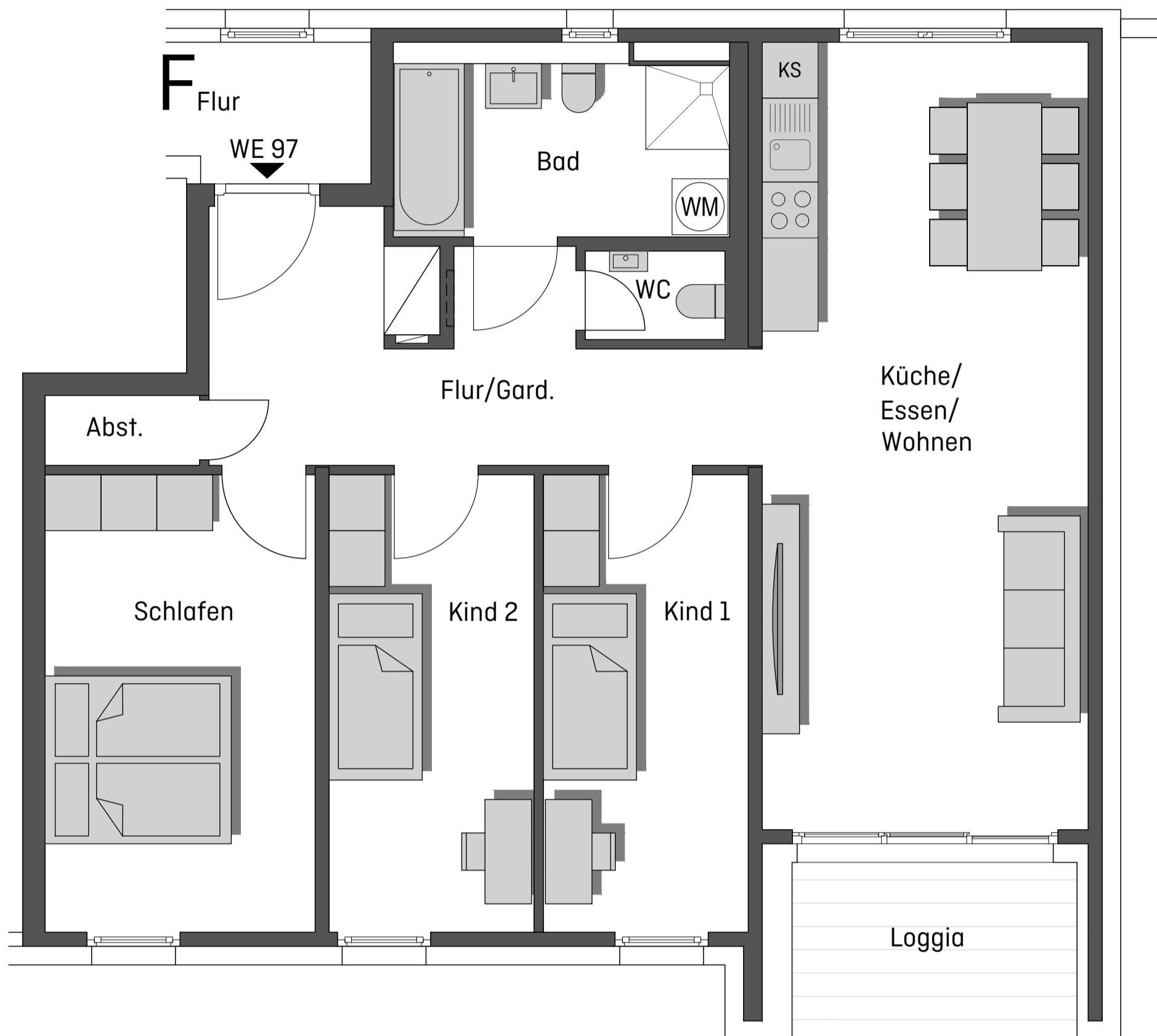


# WOHNSTOLZ

## AUGSBURG OBERHAUSEN

Reutlinger Straße 38 und 38a

Neubau 2 MFH (E+F) + TG



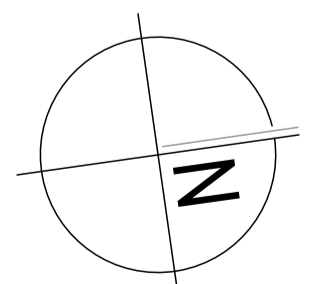
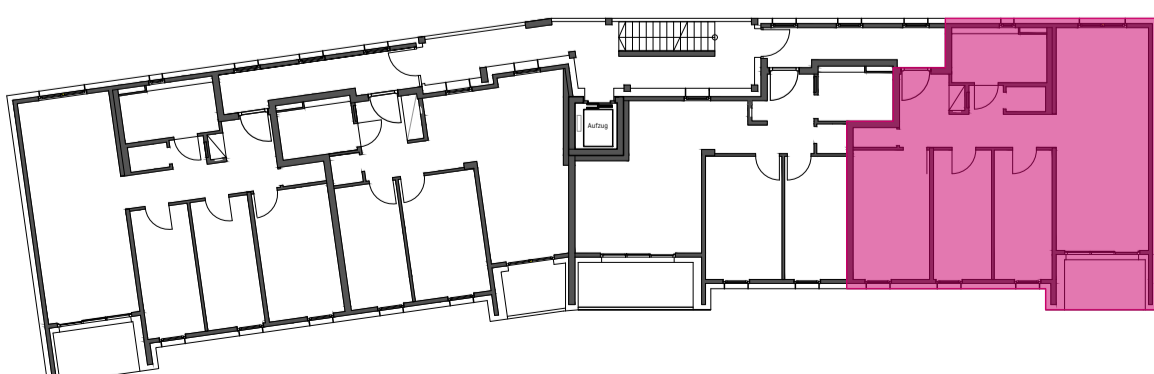
### GRUNDRISS

WE 97

3.Obergeschoss

4 Zi.-Whg.

Flur/ Gard.	12,31 m <sup>2</sup>
Abst.	1,25 m <sup>2</sup>
Schlafen	14,24 m <sup>2</sup>
Kind 1	10,80 m <sup>2</sup>
Kind 2	10,80 m <sup>2</sup>
Wohnen/Essen/Küche	29,57 m <sup>2</sup>
WC	1,38 m <sup>2</sup>
Bad	7,16 m <sup>2</sup>
Terrasse 25%	1,29 m <sup>2</sup>
<b>ges. Wohnfläche</b>	<b>88,80 m<sup>2</sup></b>



M. 1:100 - A4

0 0,5 1,0 2,5 5,0