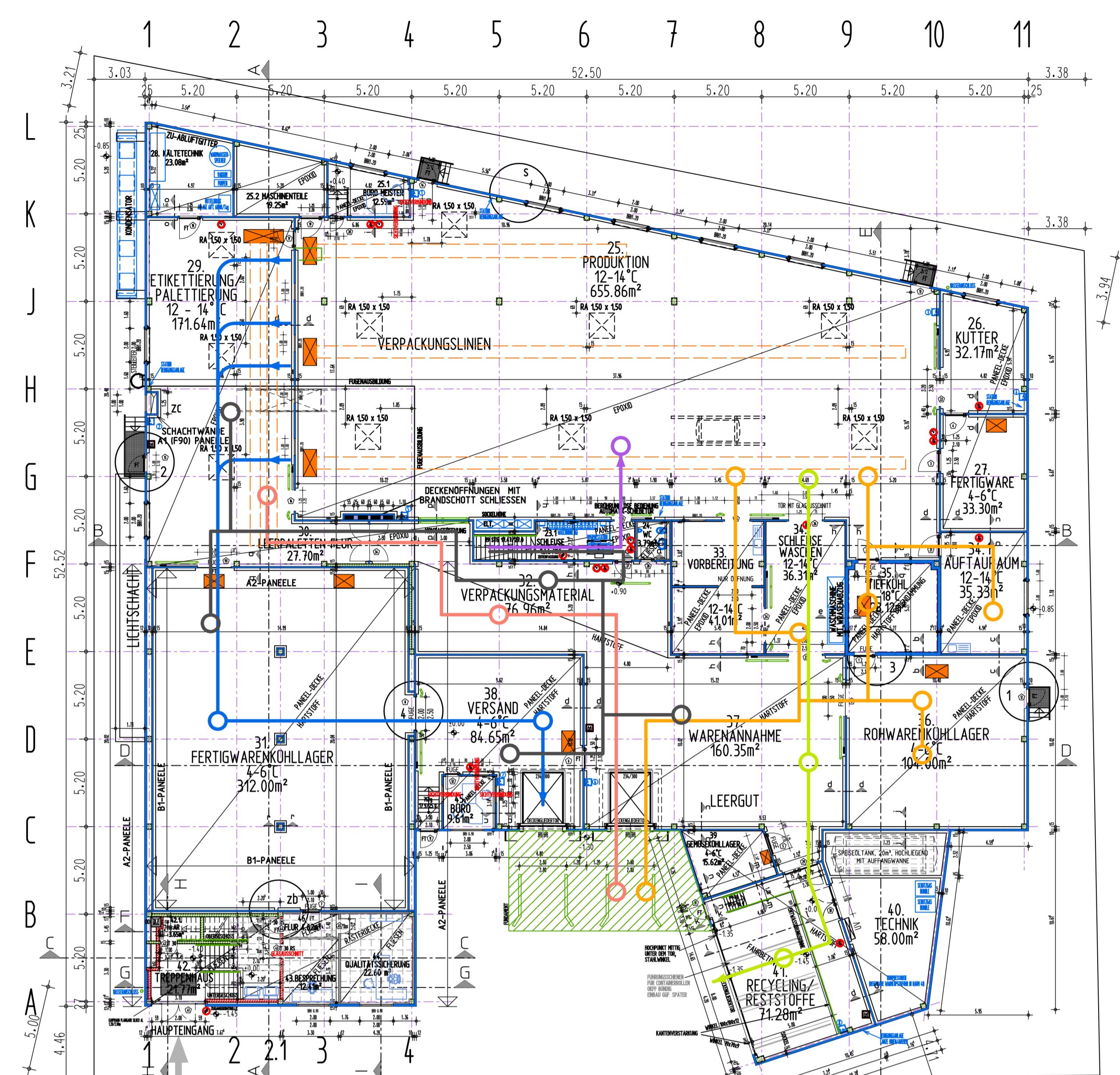
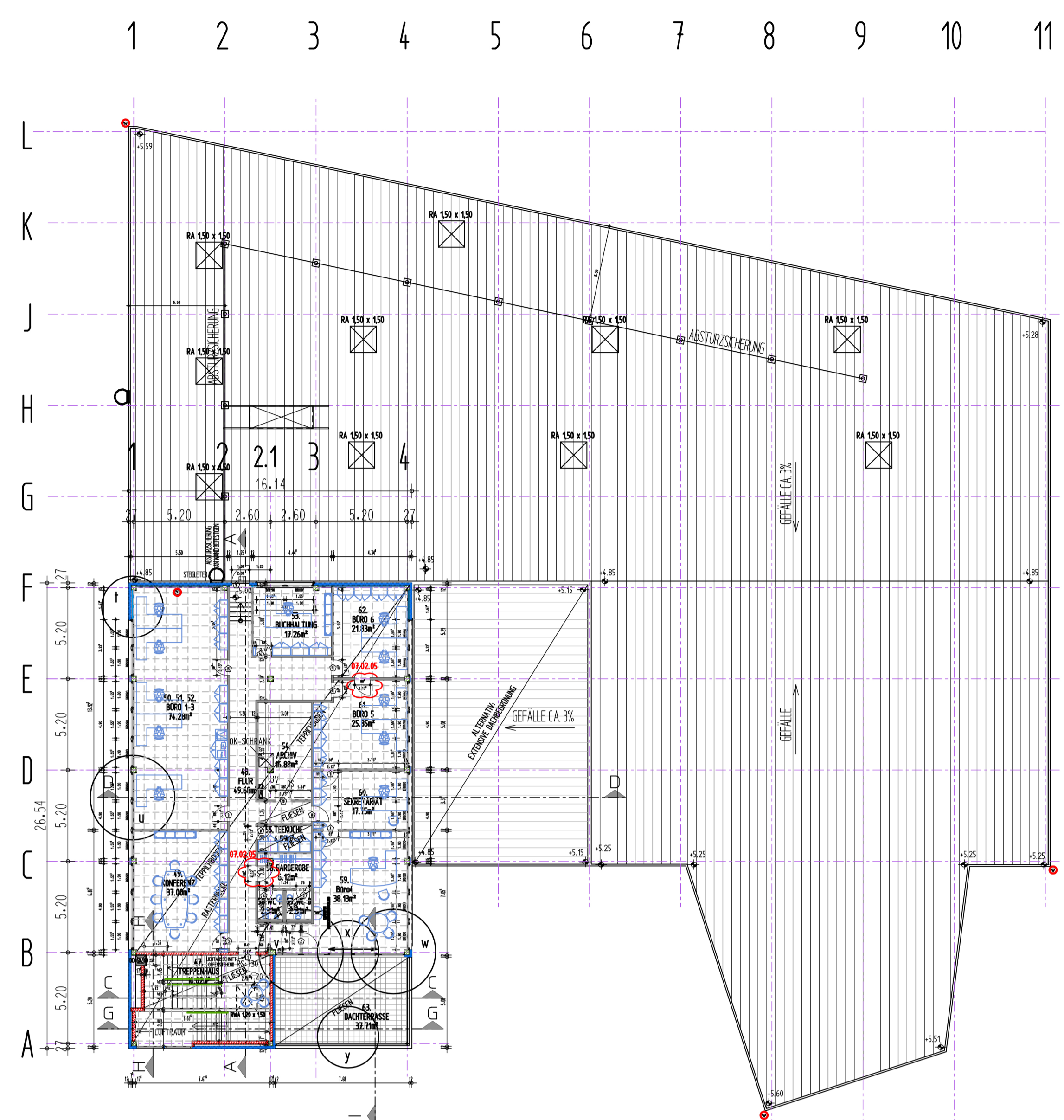


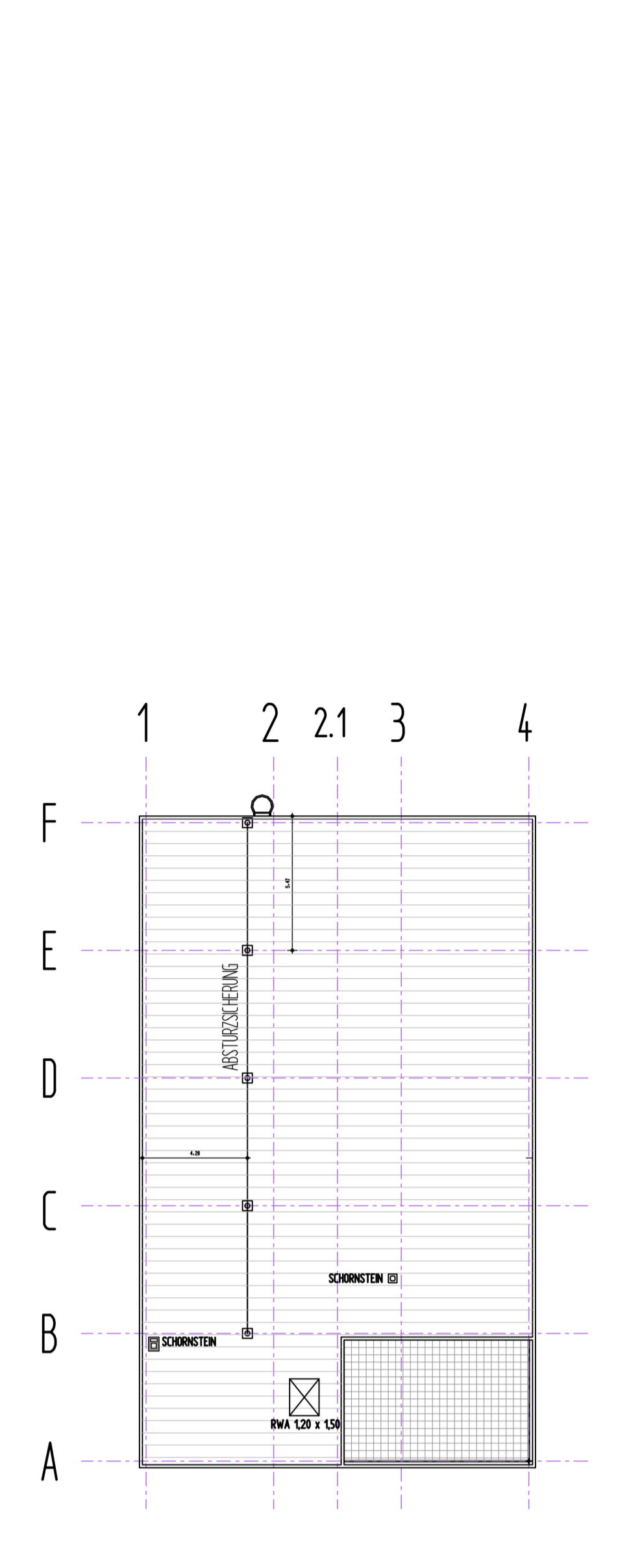
TIEFGESCHOSS



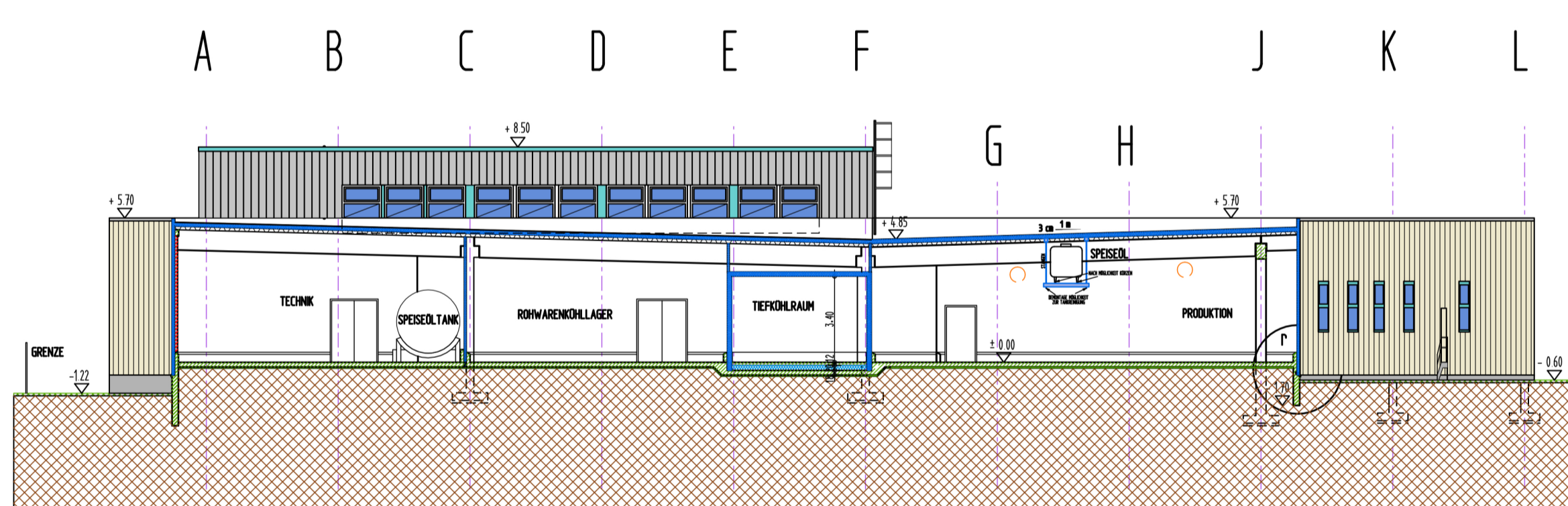
ERDGESCHOSS



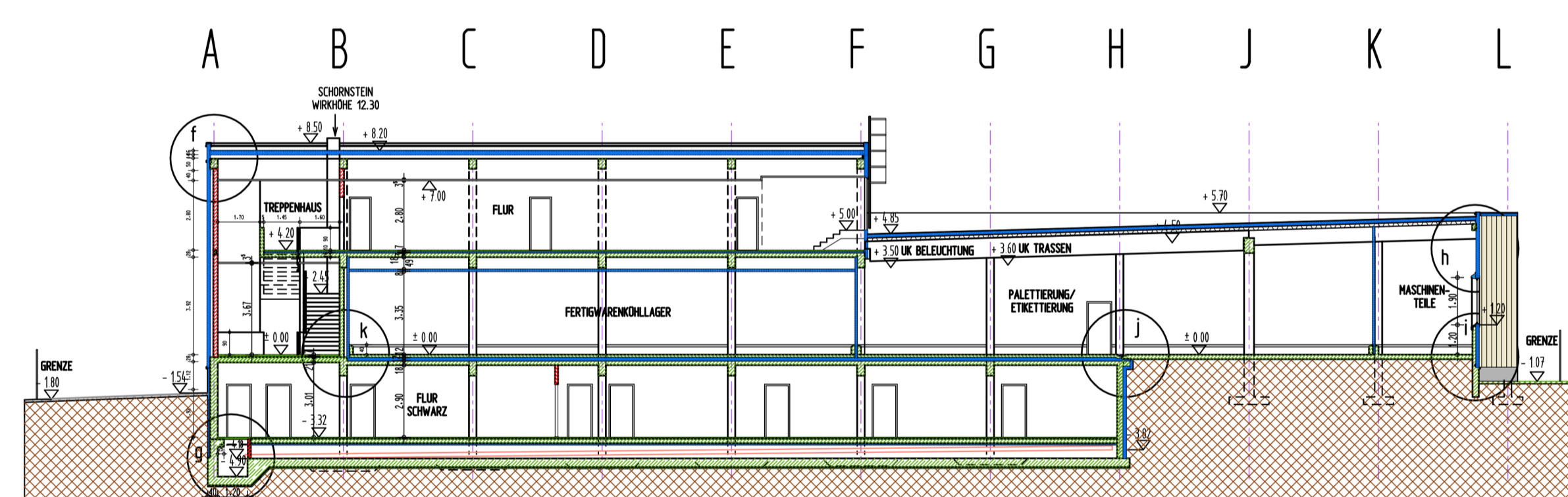
OBERGESCHOSS



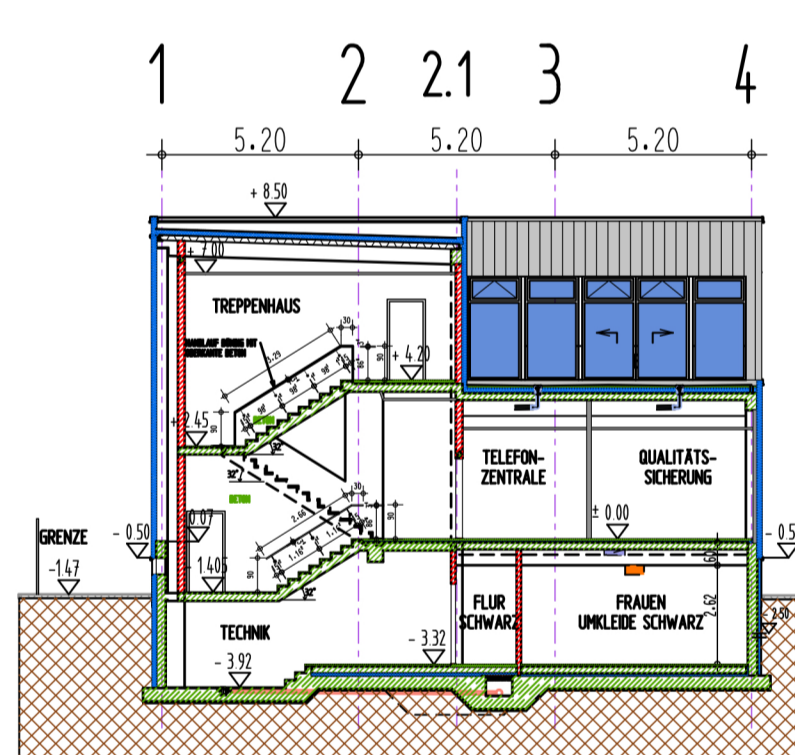
DACHDRAUFSICHT



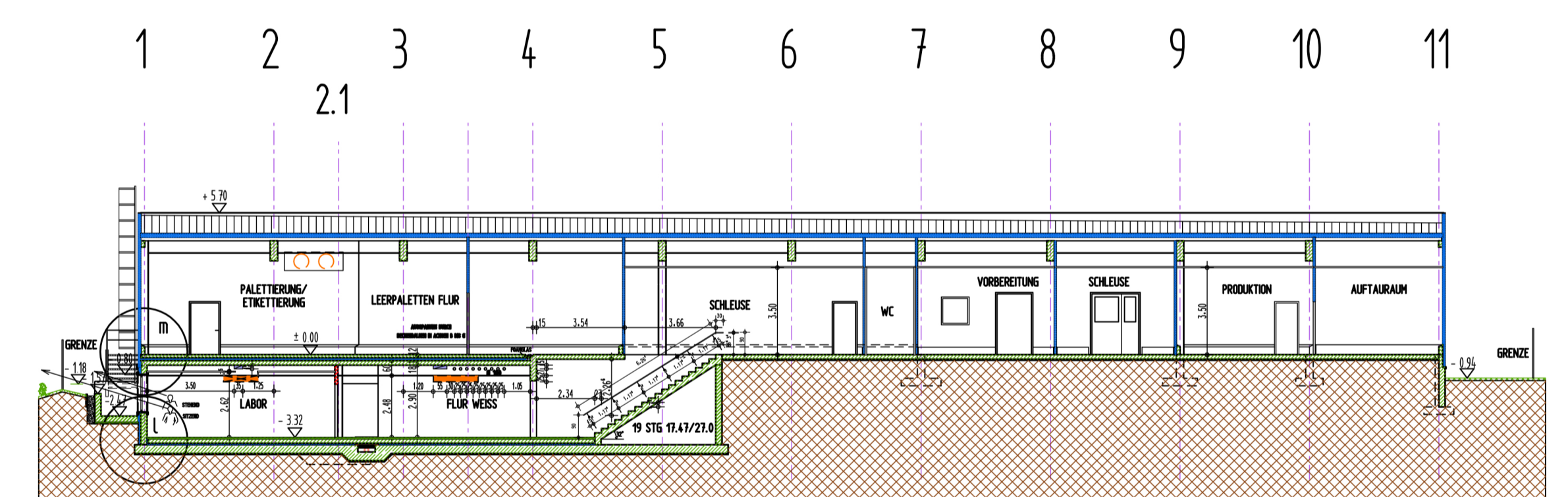
SCHNITT E



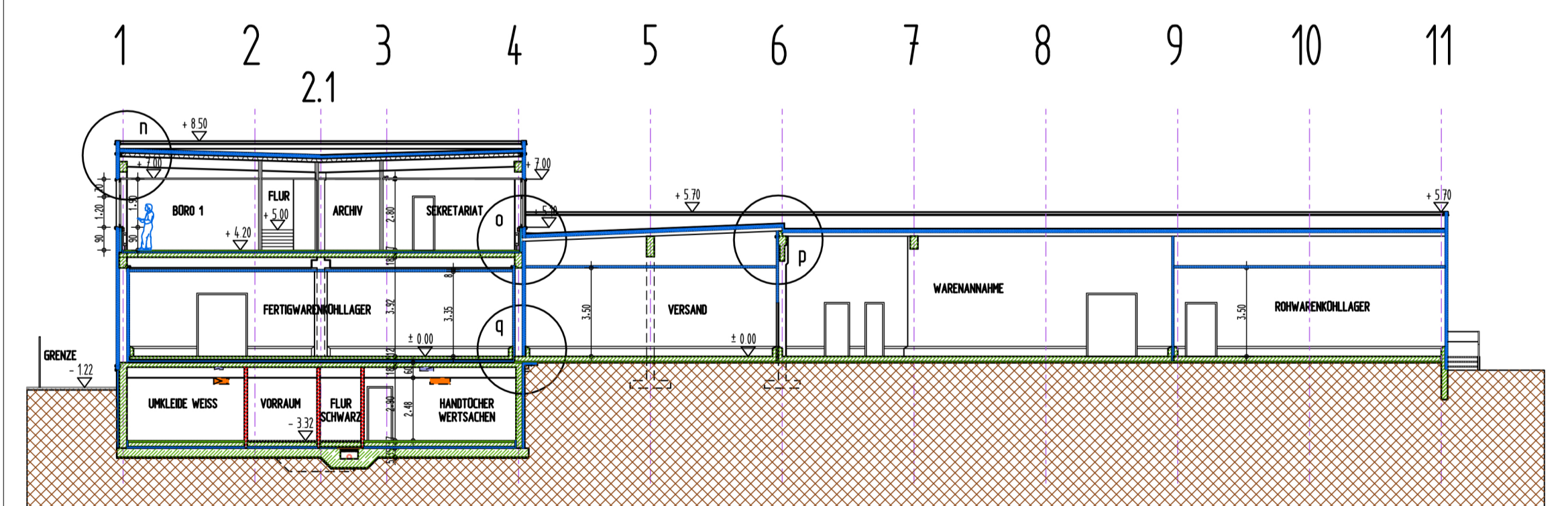
SCHNITT A



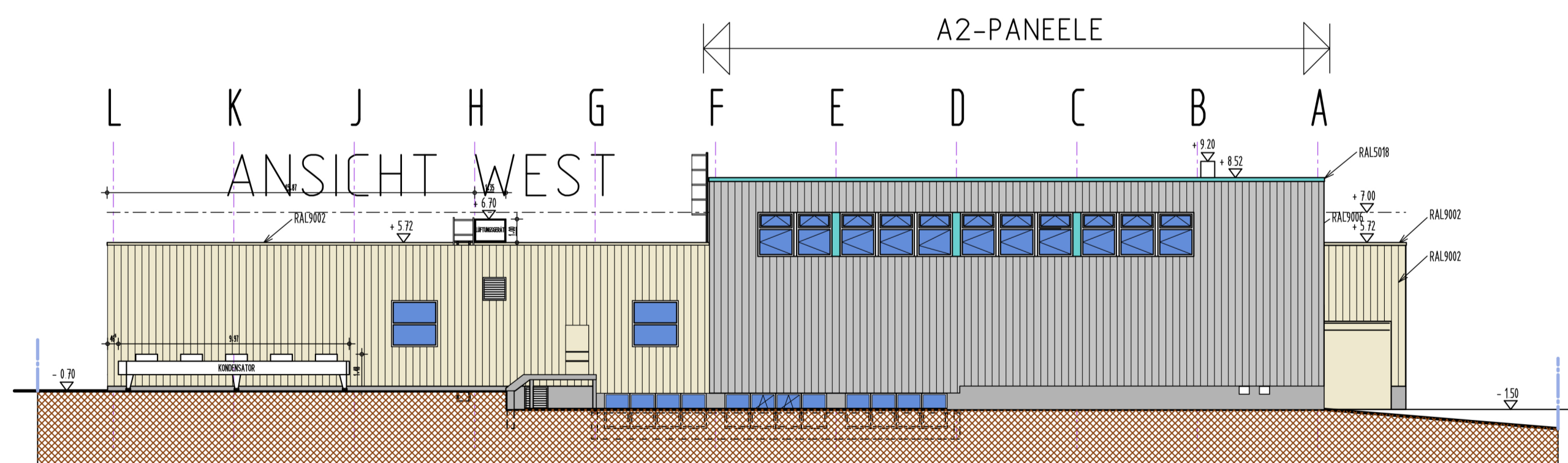
SCHNITT C



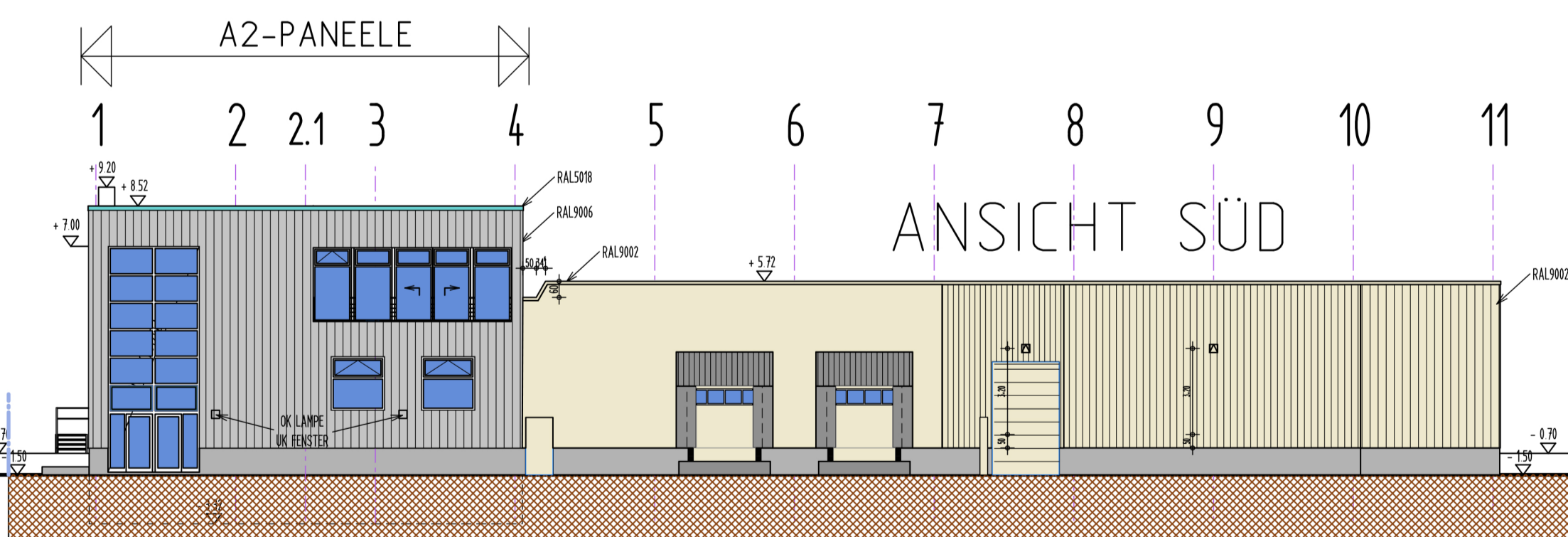
SCHNITT B



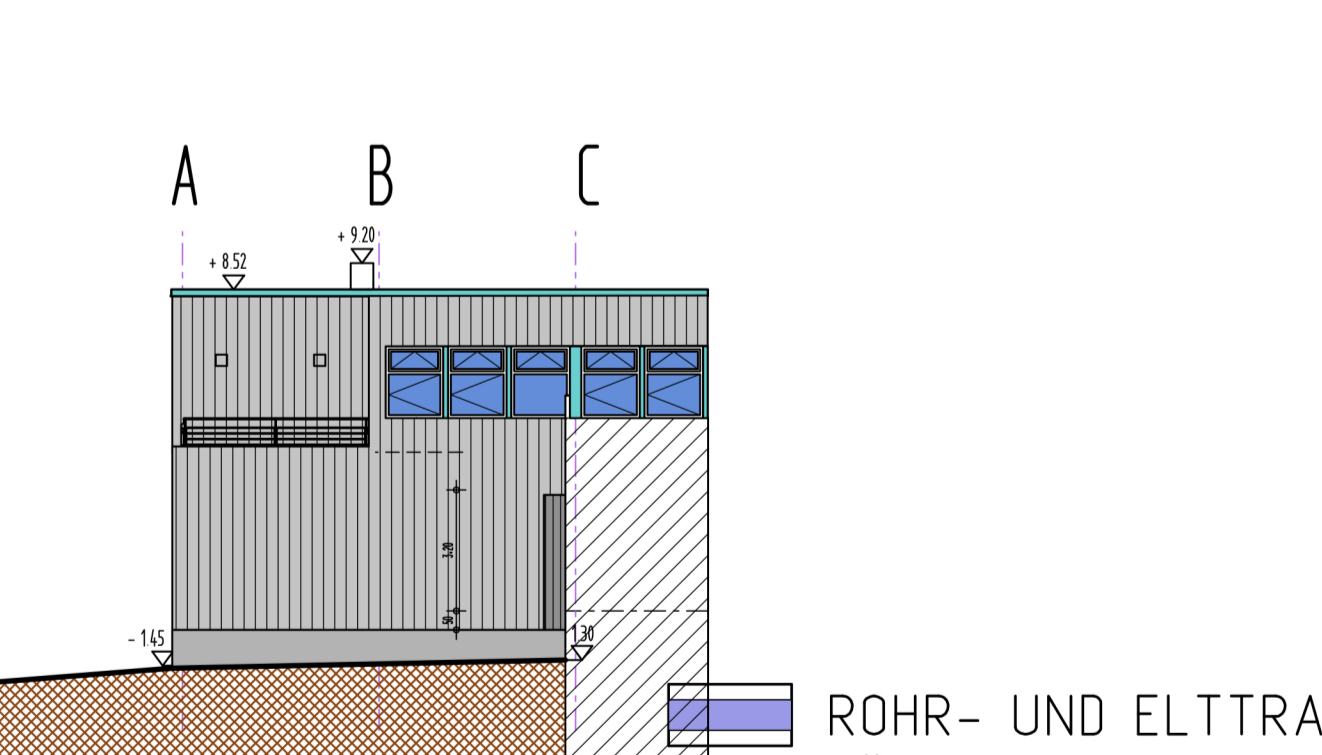
SCHNITT D



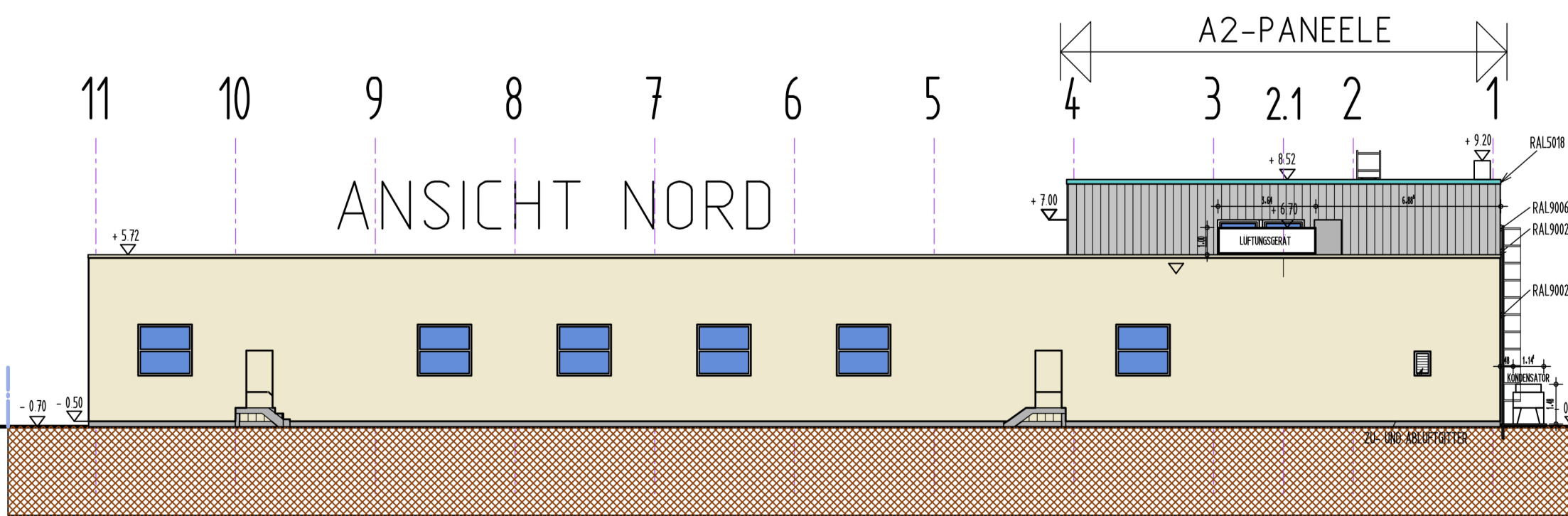
ANSICHT WEST



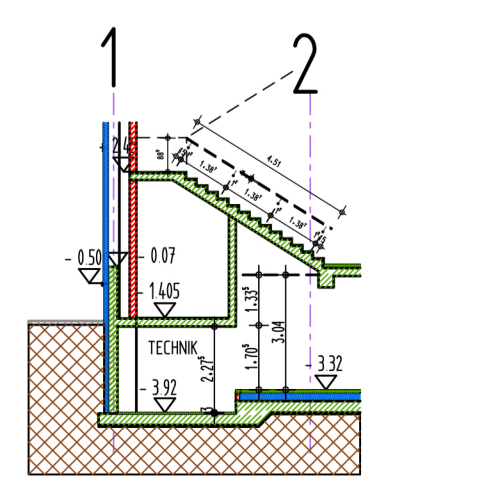
ANSICHT SÜD



ANSICHT OST



ANSICHT NORD



SCHNITT F

- ROHR- UND ELTTRASSE
- LUFTUNGSKANAL UNTER FUSSBODENNIVEAU
- LUFTUNGSKANAL
- WD, DD, BD
- LUFTUNGSGERÄT 150 kg

±0.00 = 137.34 NN