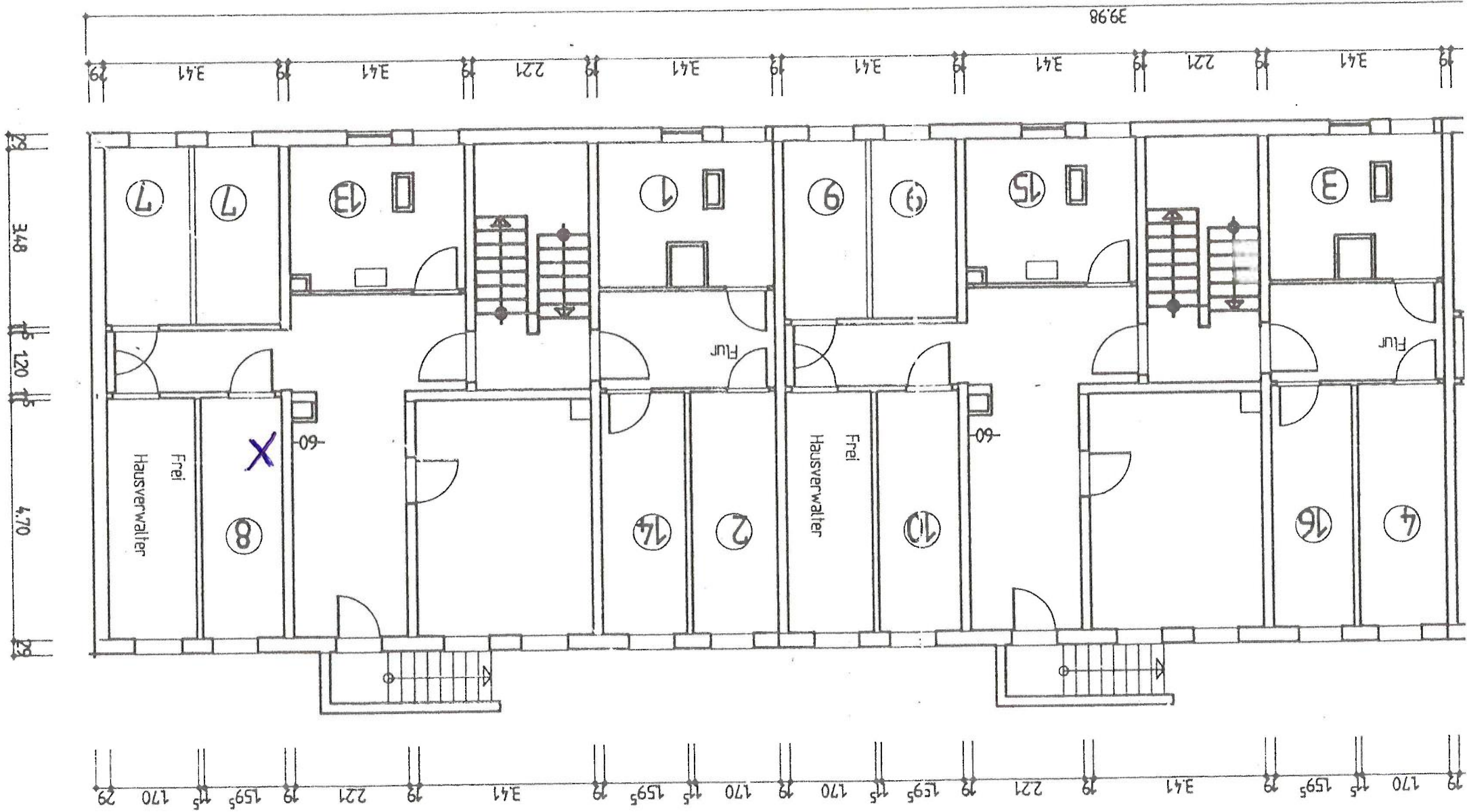
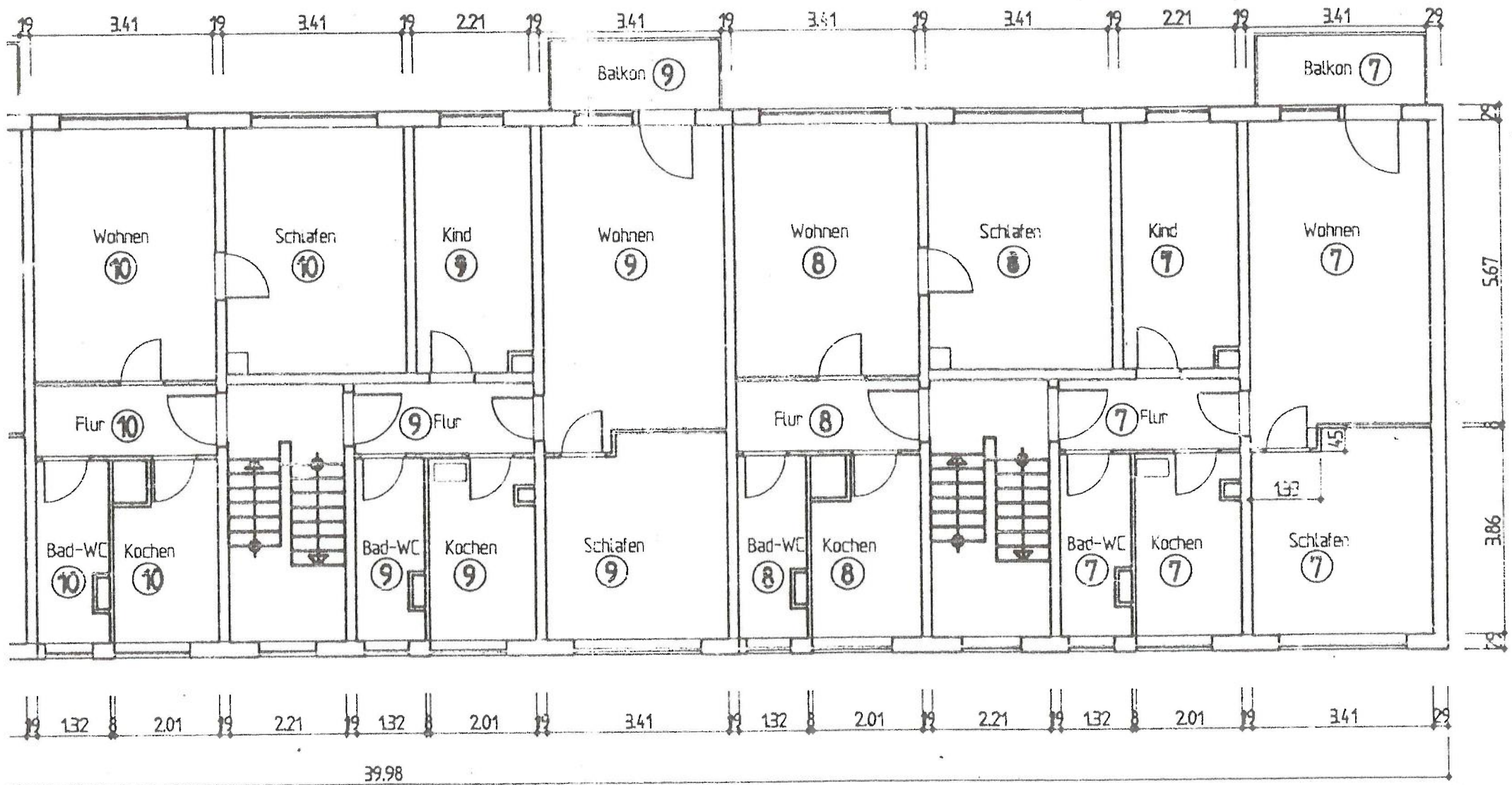


Gesamt-Wohnfläche 46,55 m²

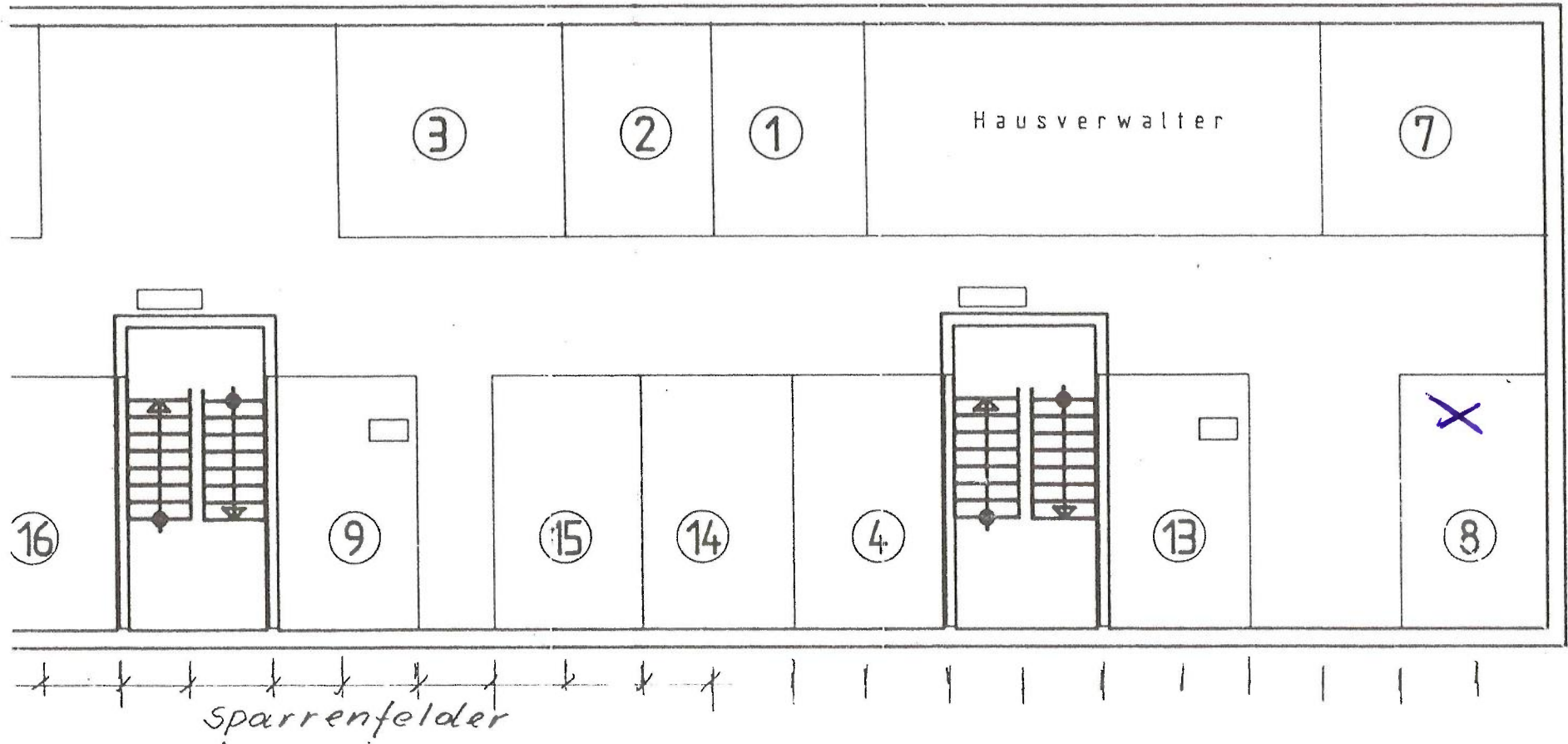
Mansfelder Weg 31, 1.Obergeschoss, links
06526 Sangerhausen OT Wippra

Kellergeschoss



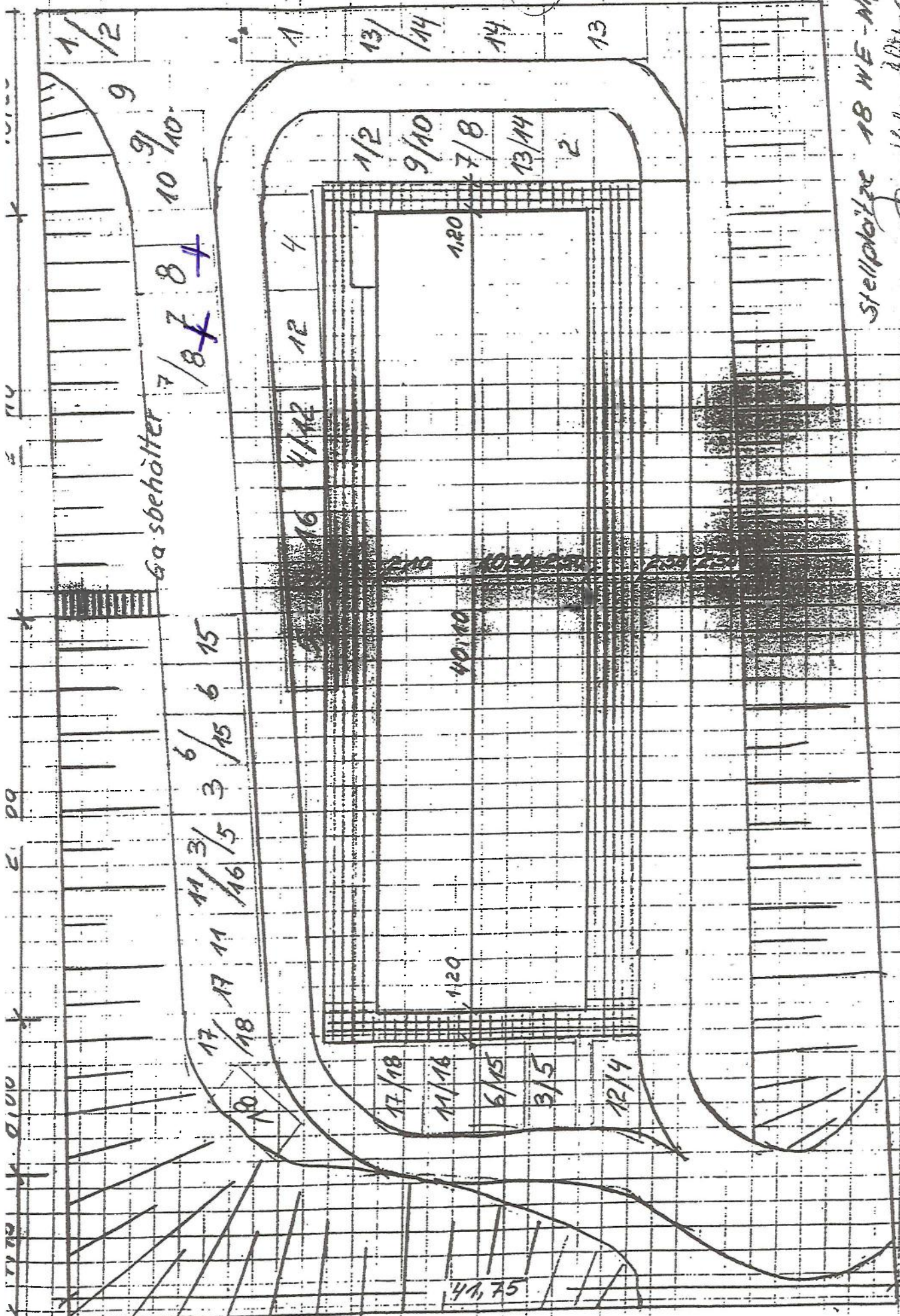


1. Obergeschoss



Dachgeschoss-Speicher

9,00 14,90 9,85



Gasbehälter

Stellplätze 18 WE - Nippura
 Nippura, am 21. 12. 1993
 Blunze Hofmann-Damm Behrend
 Verwaltungsbetrieb

4/18, 75