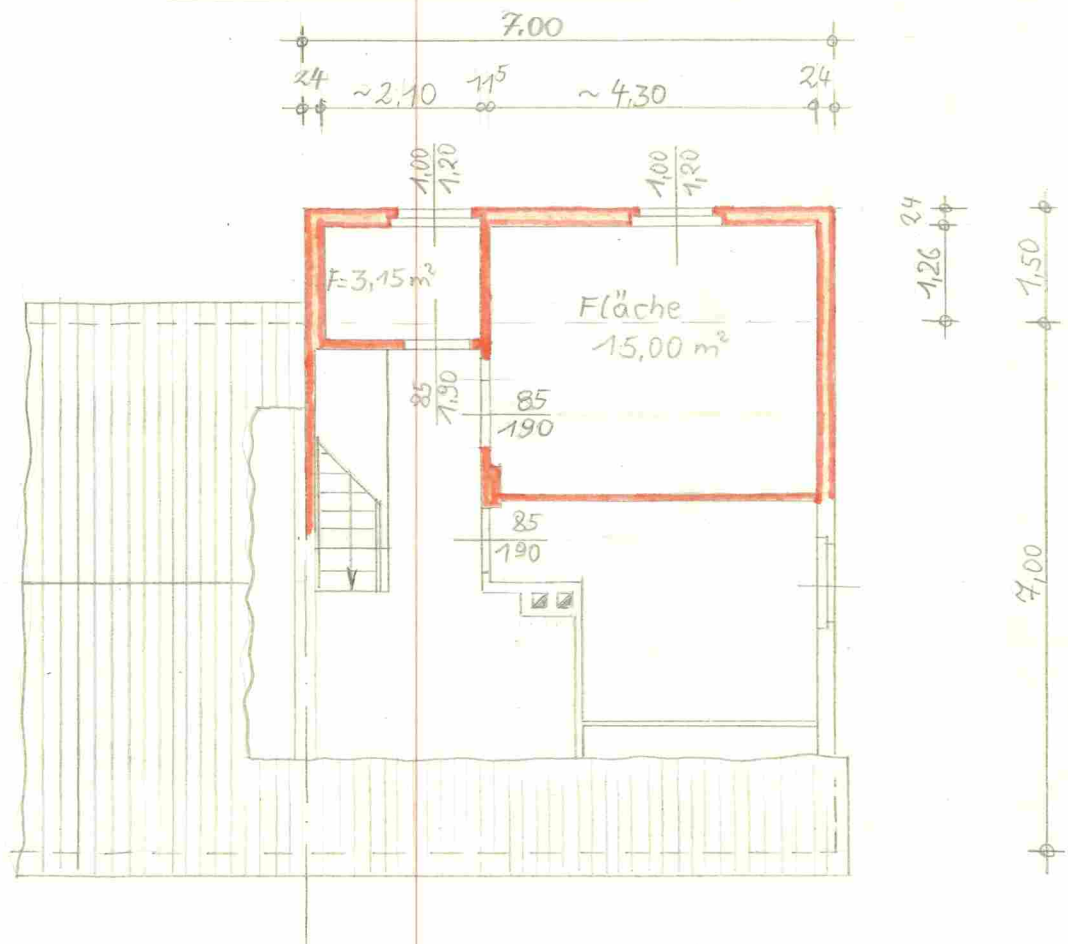
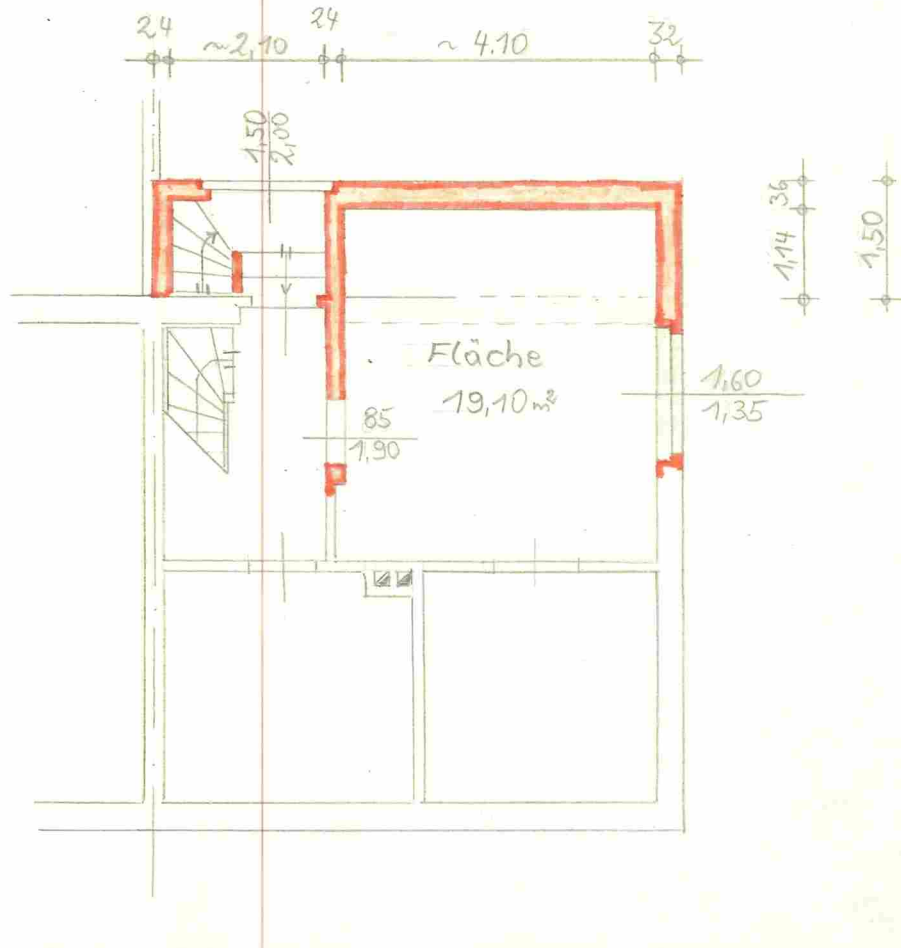


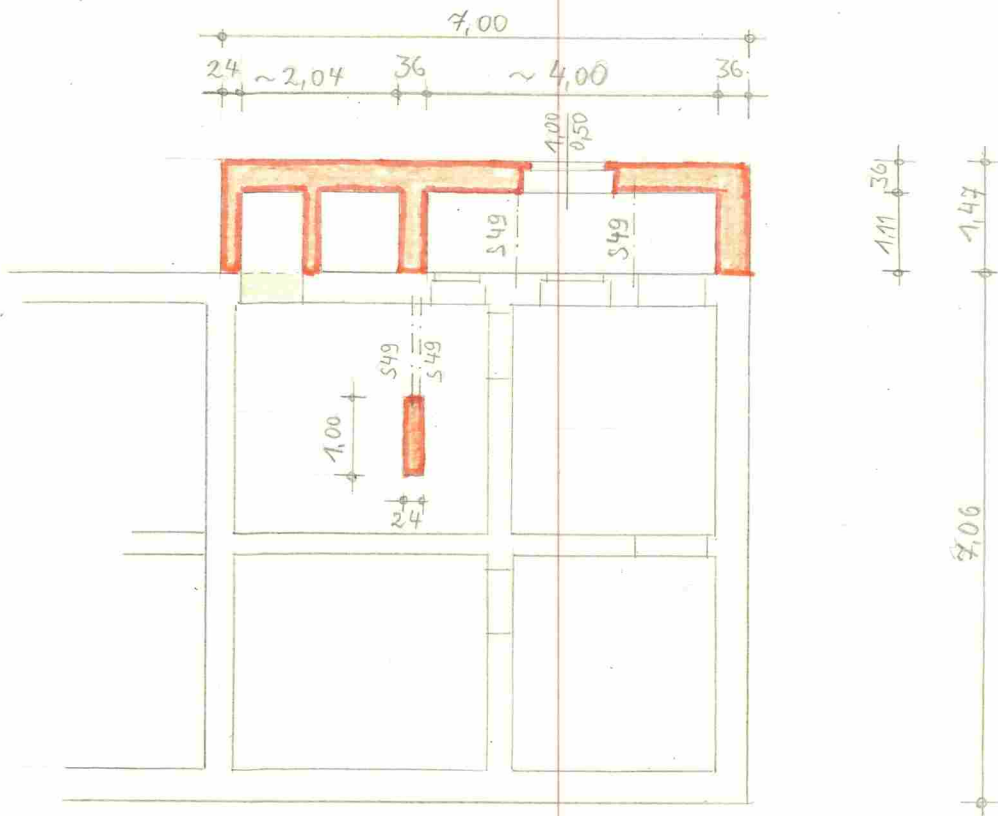
# Obergeschoß



# Erdgeschoß



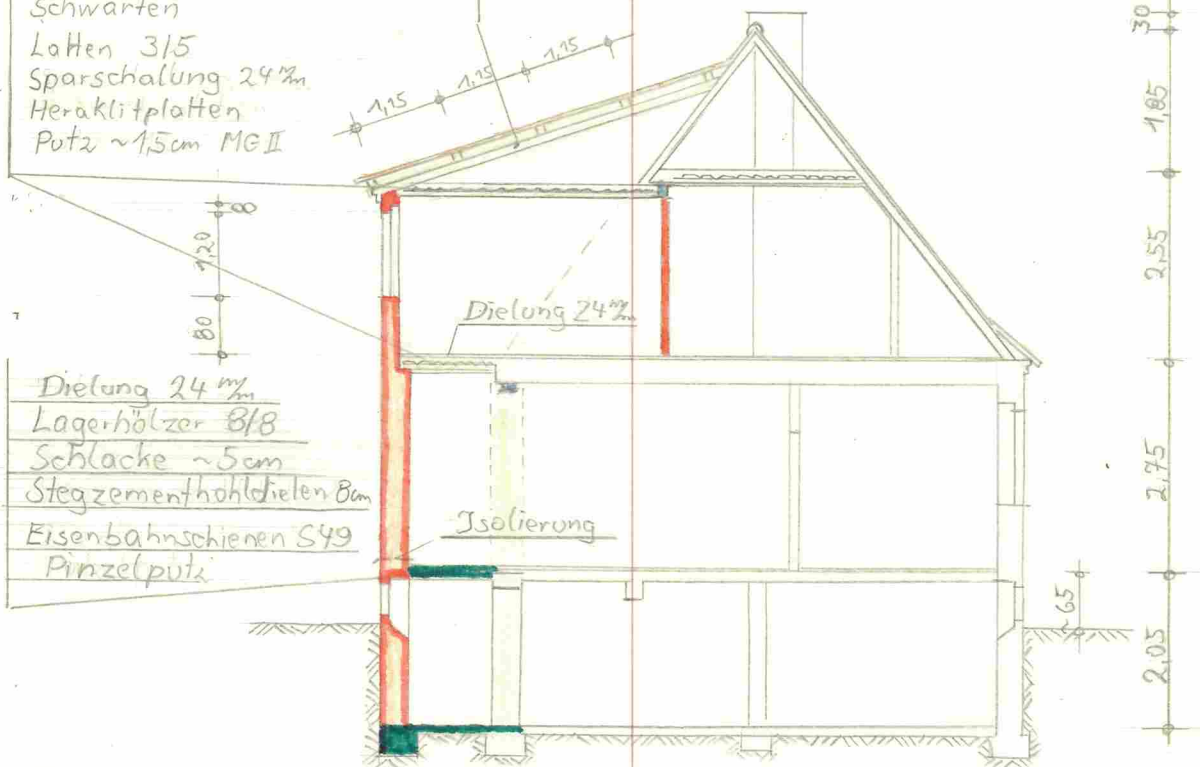
# Kellergeschoß



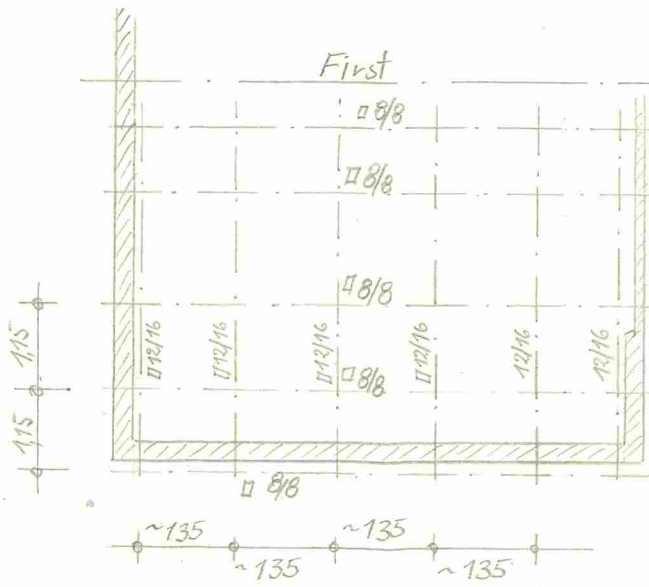
# Querschnitt

- Balken 8/16
- Lose Glaswolle
- Lehmverstrich
- Schwarten
- Latten 3/5
- Sparschalung 24%
- Heraklitplatten
- Putz ~1,5cm MG II

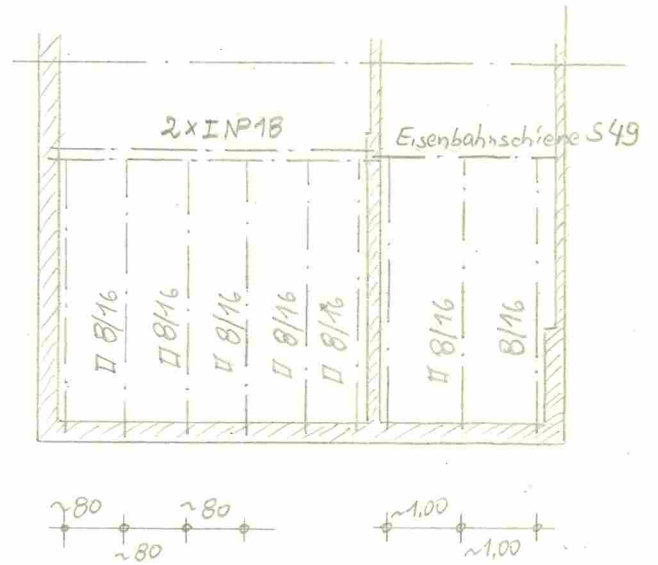
- Asbestbeton-Walltafel n. TGL 117-0065
- Holzpfeten 8/8
- Sparren 12/16



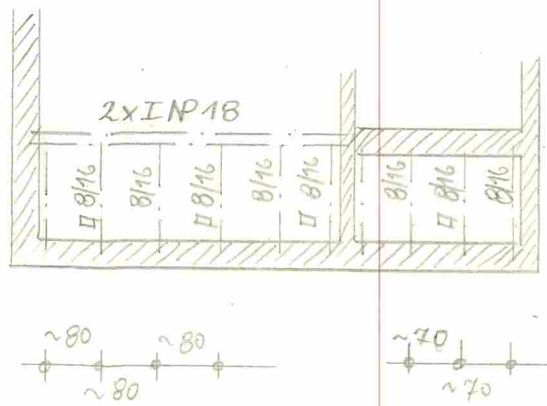
## Sparren und Pfetten



## Deckenbalken über Obergeschoß

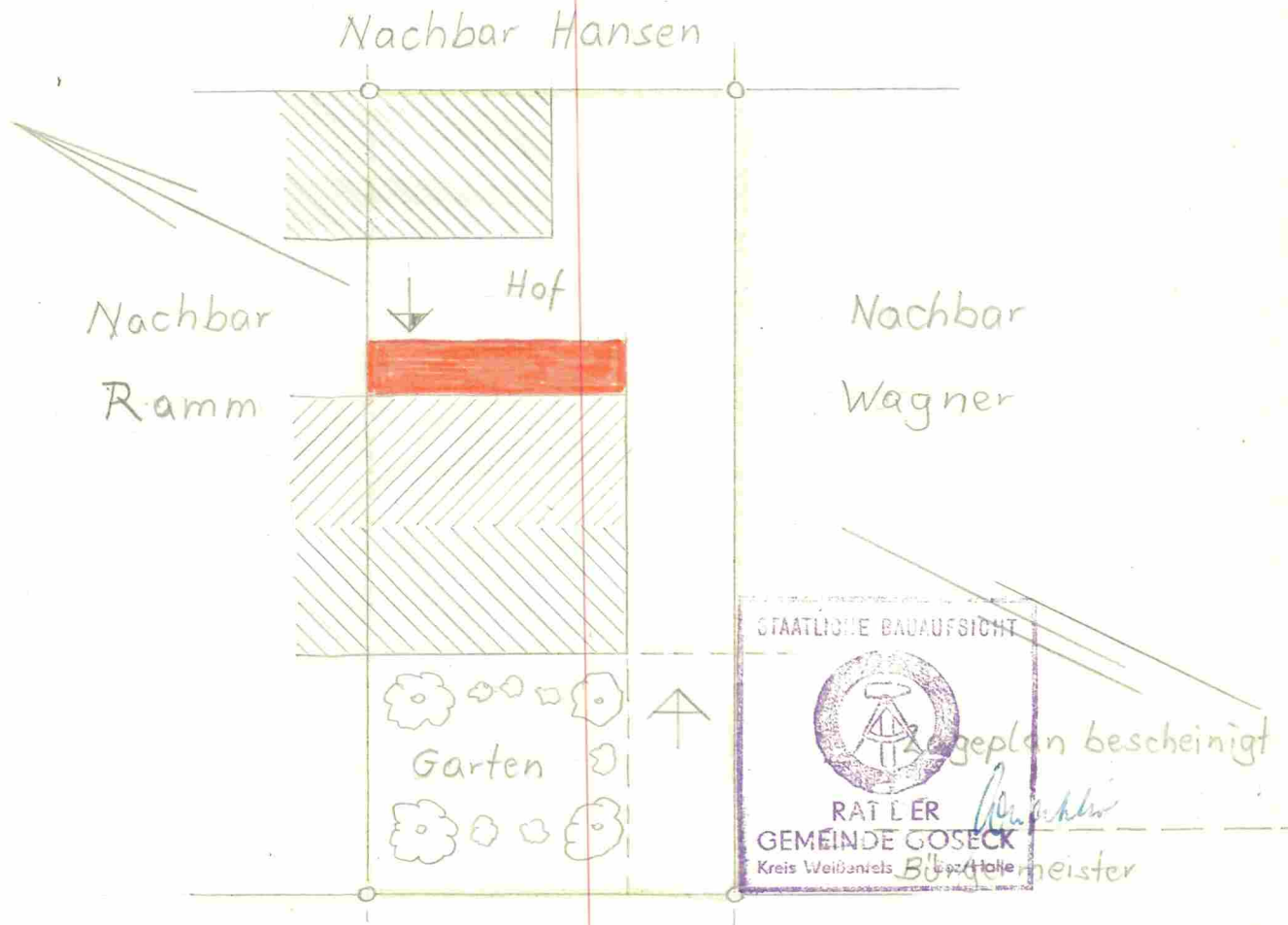


## Deckenbalken über Erdgeschoß



# Lageplan

Maßstab 1:200



Naumburger-straße

Wohnraumschaffung  
für

Frau Martha Rockstroh

Goseck - Naumburgerstraße 10

Goseck im Juni 1969

Für die Zeichnung



Bau-Ing.

Bauherr und Ausführender