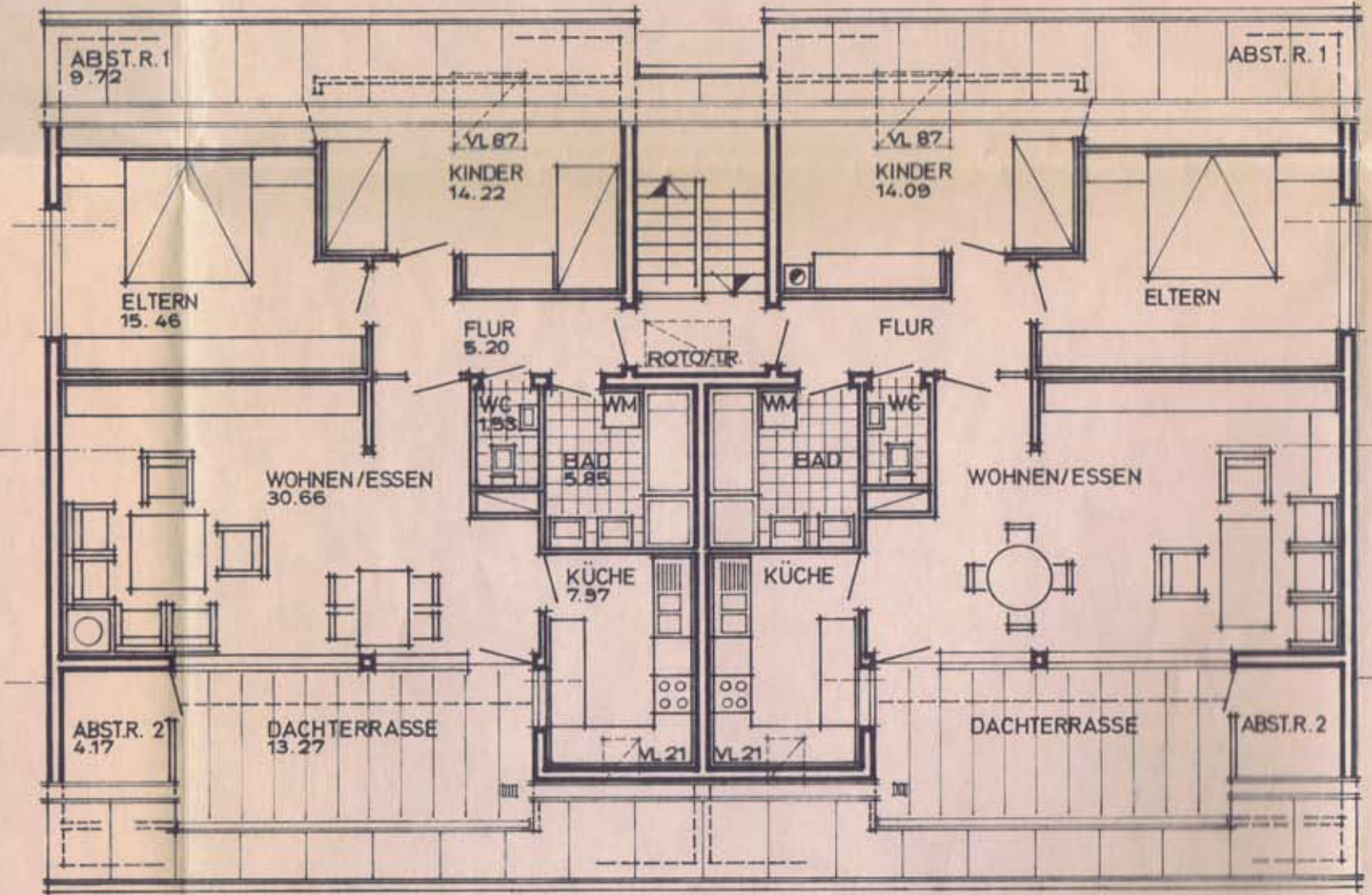


W 5

W 6



24	4.76	1 ⁵	1.51	8	1.01	8	2.33	24	2.33	8	1.01	8	1.51	11 ⁵	4.76	24
24		7.47 ⁵				8	2.33	24	2.33	8				7.47 ⁵		24
24	1.75		5.56 ⁵			24	2.33	24	2.33		24			5.56 ⁵		1.75 24

20.49